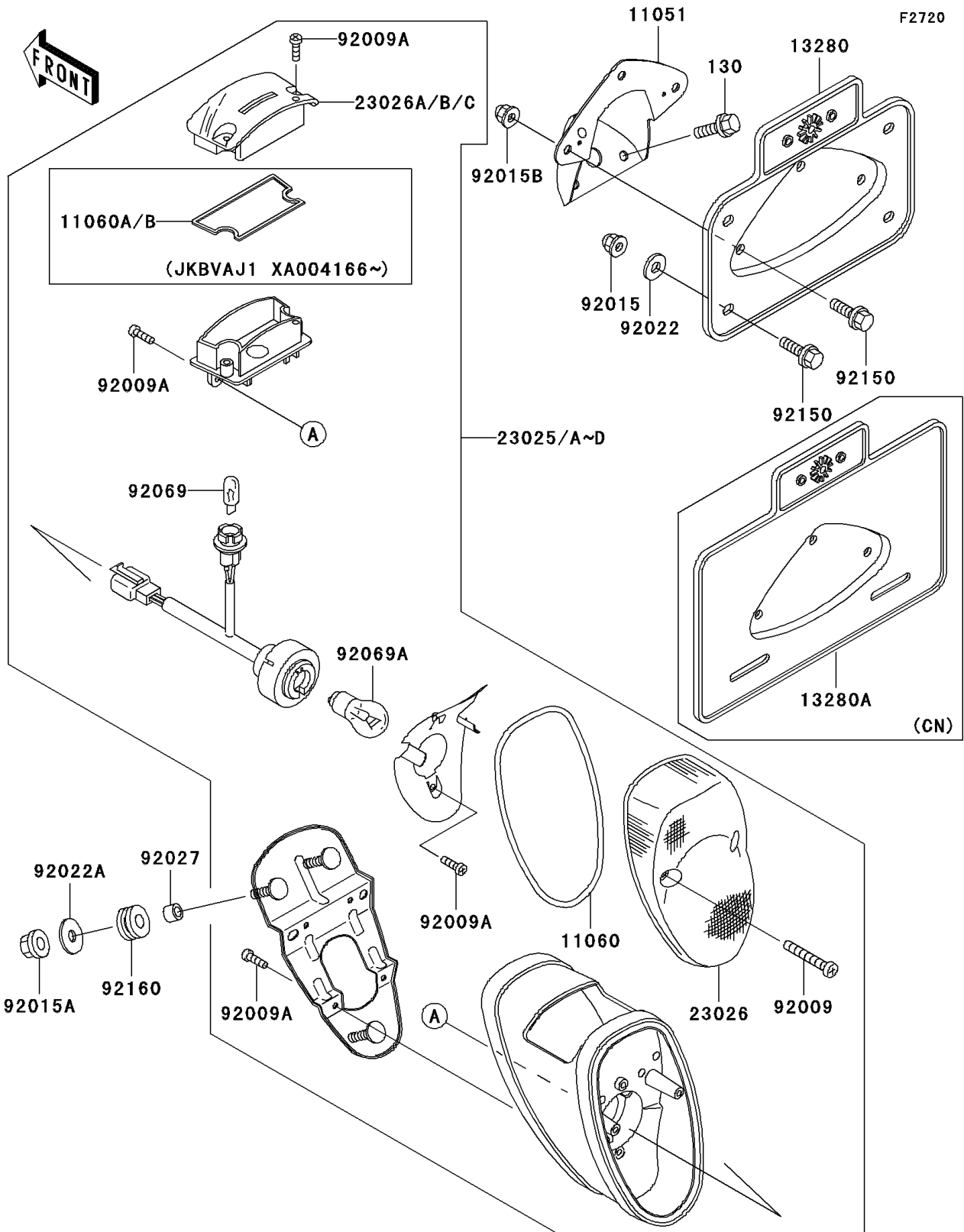


## 1999 Vulcan® 1500 Drifter® PARTS DIAGRAM

Taillight(s)



## 1999 Vulcan® 1500 Drifter® PARTS LIST

Taillight(s)

| ITEM NAME                             | PART NUMBER | QUANTITY |
|---------------------------------------|-------------|----------|
| BRACKET,LICENSE HOLDER (Ref # 11051)  | 11051-1086  | 1        |
| GASKET,TAIL LAMP (Ref # 11060)        | 11060-1884  | 1        |
| GASKET,LICENSE LENS (Ref # 11060B)    | 11060-1939  | 1        |
| LAMP-TAIL (Ref # 23025A)              | 23025-1280  | 2        |
| LAMP-TAIL (Ref # 23025C)              | 23025-1293  | 2        |
| LENS,TAIL (Ref # 23026)               | 23026-1220  | 1        |
| LENS,LICENSE (Ref # 23026A)           | 23026-1221  | 1        |
| LENS,LICENSE (Ref # 23026C)           | 23026-1224  | 1        |
| SCREW,TAPPING,4X20 (Ref # 92009)      | 92009-1378  | 1        |
| SCREW,TAPPING,4X12 (Ref # 92009A)     | 92009-1381  | 1        |
| NUT,FLANGED,6MM (Ref # 92015A)        | 92015-1367  | 1        |
| NUT,CAP,6MM (Ref # 92015B)            | 92015-1385  | 1        |
| WASHER,6.5X20X1.6 (Ref # 92022A)      | 92022-1557  | 1        |
| COLLAR,6.8X10X12 (Ref # 92027)        | 92027-162   | 1        |
| BULB,12V 5W (Ref # 92069)             | 92069-1016  | 1        |
| BULB,12V 21/5W (Ref # 92069A)         | 92069-1084  | 1        |
| BOLT-FLANGED (Ref # 130)              | 130J0612    | 1        |
| DAMPER (Ref # 92160)                  | 92160-1162  | 1        |
| HOLDER,LICENSE PLATE (Ref # 13280)    | 13280-1103  | 1        |
| HOLDER,LICENSE PLATE (Ref # 13280A)   | 13280-1130  | 1        |
| NUT,CAP,6MM,BLACK (Ref # 92015)       | 92015-1170  | 2        |
| WASHER,6.5X20X1.6,BLACK (Ref # 92022) | 92022-1346  | 2        |
| BOLT,6X14 (Ref # 92150)               | 92150-1133  | 2        |