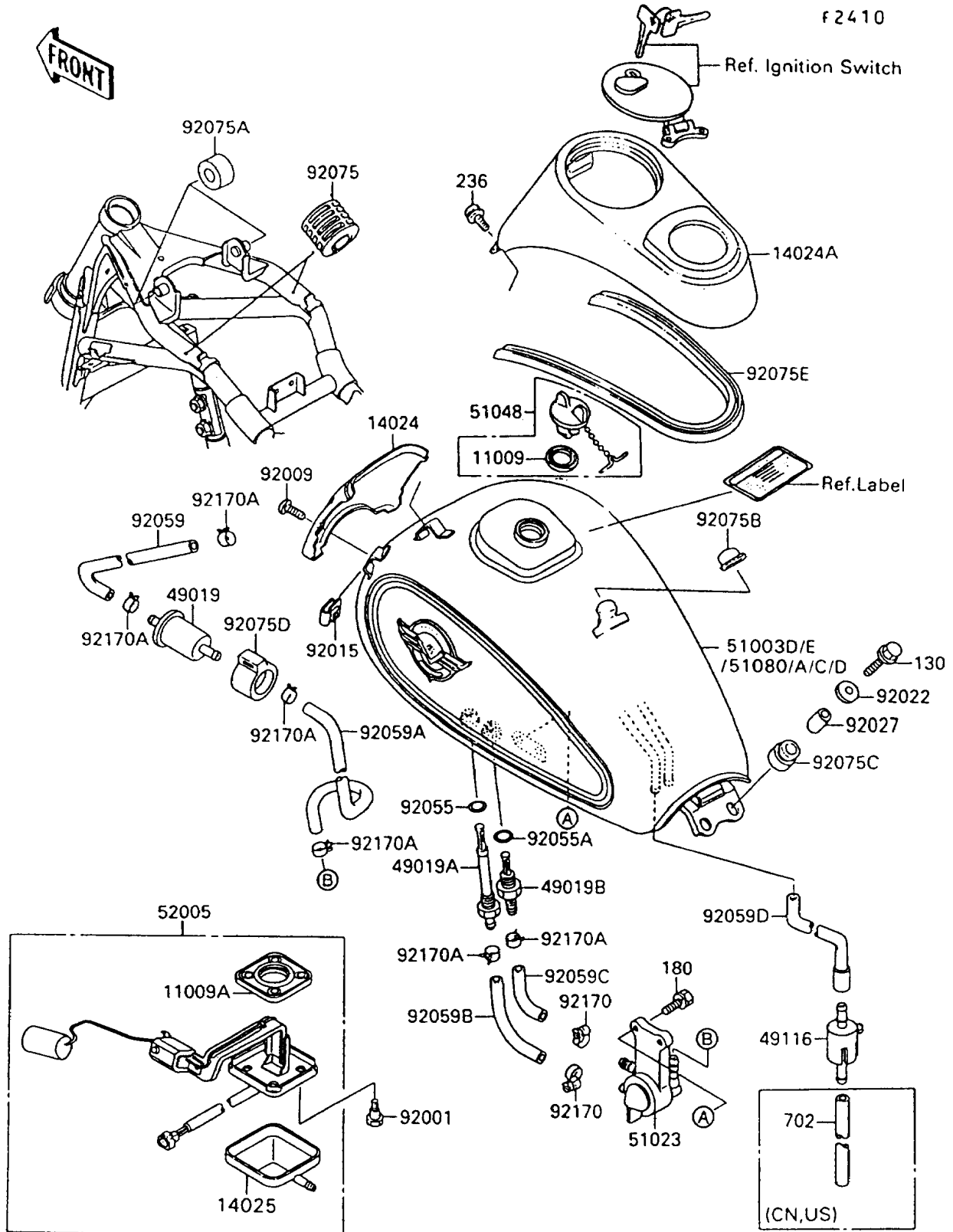


1992 Vulcan® 88 PARTS DIAGRAM

Fuel Tank



1992 Vulcan® 88 PARTS LIST

Fuel Tank

ITEM NAME	PART NUMBER	QUANTITY
GASKET,TANK CAP (Ref # 11009)	11009-1326	1
GASKET,FUEL GAUGE (Ref # 11009A)	11009-1656	1
COVER,FUEL TANK,FR (Ref # 14024)	14024-1453	1
COVER,FUEL TANK,UPP (Ref # 14024A)	14024-1614	1
COVER,FUEL GAUGE (Ref # 14025)	14025-1536	1
FILTER-FUEL (Ref # 49019)	49019-1055	1
FILTER-FUEL,"ON" (Ref # 49019A)	49019-1056	1
FILTER-FUEL,"RES" (Ref # 49019B)	49019-1057	1
VALVE-ASSY,BREATHER (Ref # 49116)	49116-1063	1
TANK-COMP-FUEL,BLUE/GRAY (Ref # 51003D)	51003-5433-SW	1
TANK-COMP-FUEL,BLUE/GRAY (Ref # 51003E)	51003-5434-SW	1
TAP-ASSY,FUEL (Ref # 51023)	51023-1136	1
CAP-ASSY-TANK,FUEL (Ref # 51048)	51048-1094	1
GAUGE,FUEL (Ref # 52005)	52005-1084	1
BOLT-FLANGED,6X25 (Ref # 130)	130B0625	1
BOLT-UPSET-WS (Ref # 180)	180B0608	1
SCREW-PAN-WSP-CROS,5X10 (Ref # 236)	236B0510	1
TUBE-RUBBER,5X8X550 (Ref # 702)	702A05550	1
BOLT,FUEL GAUGE (Ref # 92001)	92001-1705	1
SCREW,5X10 (Ref # 92009)	92009-1651	1
NUT,CLAMP,5MM (Ref # 92015)	92015-1677	1
WASHER,6.5X20X1.6 (Ref # 92022)	92022-125	1
COLLAR,6.8X10X14.5 (Ref # 92027)	92027-156	1
RING-O,ID=9.5 (Ref # 92055)	92055-1386	1
RING-O,11.5X1.5 (Ref # 92055A)	92055-1387	1
TUBE (Ref # 92059)	92059-1785	1
TUBE (Ref # 92059A)	92059-1786	1
TUBE,"ON" (Ref # 92059B)	92059-1818	1
TUBE,"RES" (Ref # 92059C)	92059-1819	1

1992 Vulcan® 88 PARTS LIST

Fuel Tank

ITEM NAME	PART NUMBER	QUANTITY
TUBE (Ref # 92059D)	92059-1854	1
DAMPER,FUEL TANK (Ref # 92075)	92075-084	1
DAMPER,FUEL TANK,FR (Ref # 92075A)	92075-1115	1
DAMPER (Ref # 92075B)	92075-1445	1
DAMPER (Ref # 92075C)	92075-167	1
DAMPER,FUEL FILTER (Ref # 92075D)	92075-1853	1
DAMPER,FUEL TANK COVER (Ref # 92075E)	92075-1933	1
CLAMP (Ref # 92170)	92170-1278	1
CLAMP (Ref # 92170A)	92170-2043	1