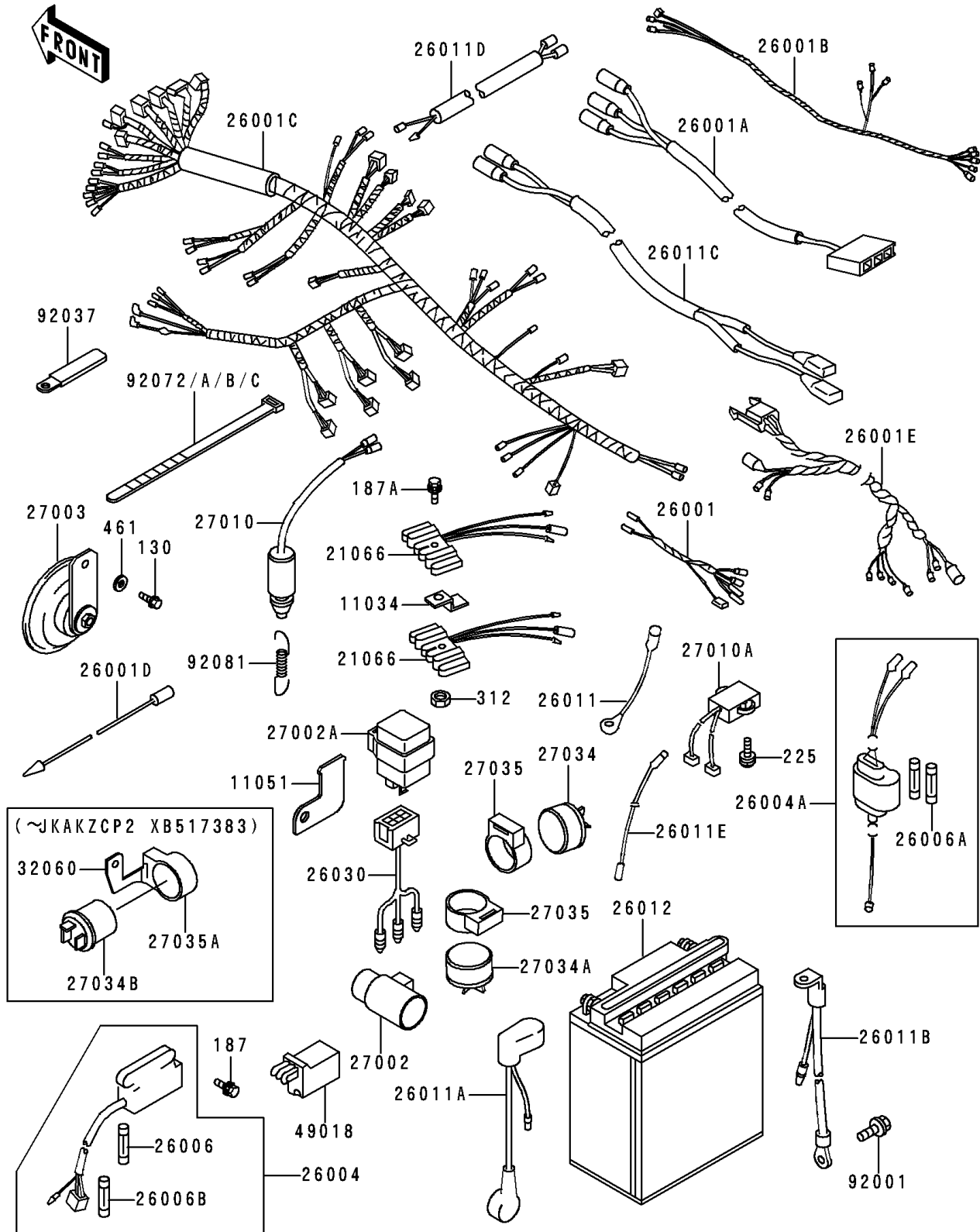


## 2000 Police 1000 PARTS DIAGRAM

Chassis Electrical Equipment

F2760



## 2000 Police 1000 PARTS LIST

Chassis Electrical Equipment

ITEM NAME	PART NUMBER	QUANTITY
BRACKET,HAZARD REGULATOR (Ref # 11034)	11034-4163	1
BRACKET,PURSUIT RELAY (Ref # 11051)	11051-1561	1
REGULATOR (Ref # 21066)	21066-024	1
HARNESS,TAIL LAMP (Ref # 26001)	26001-1013	1
HARNESS,TAIL (Ref # 26001A)	26001-1343	1
HARNESS,SCREW (Ref # 26001B)	26001-1344	1
HARNESS,MAIN (Ref # 26001C)	26001-1805	1
HARNESS (Ref # 26001D)	26001-4014	1
HARNESS,FAIRING (Ref # 26001E)	26001-4020	1
FUSE-ASSY (Ref # 26004)	26004-1011	1
FUSE-ASSY,ACCESSORY (Ref # 26004A)	26004-1014	1
FUSE,10A,L=25 (Ref # 26006)	26006-003	1
FUSE,10A,L=30 (Ref # 26006A)	26006-1002	1
FUSE,30A,L=25 (Ref # 26006B)	26006-1005	1
WIRE-LEAD,ACCESSORY GROUND (Ref # 26011)	26011-1100	1
WIRE-LEAD,BATTERY,(+) (Ref # 26011A)	26011-1118	1
WIRE-LEAD,BATTERY,(-) (Ref # 26011B)	26011-1124	1
WIRE-LEAD,TURN SIGNAL (Ref # 26011C)	26011-1148	1
WIRE-LEAD,FR BRAKE SWITCH (Ref # 26011D)	26011-1489	1
WIRE-LEAD,PURSUIT LAMP (Ref # 26011E)	26011-4010	1
BATTERY,12V 18AH,YB18L-A (Ref # 26012)	26012-1236	1
HARNESS,PURSUIT RELAY (Ref # 26030)	26030-1724	1
RELAY-ASSY (Ref # 27002)	27002-1051	1
RELAY-ASSY,SIGNAL LAMP (Ref # 27002A)	27002-1075	1
HORN (Ref # 27003)	27003-1047	1
SWITCH,REAR BRAKE (Ref # 27010)	27010-1019	1
SWITCH,TURN SIGNAL OPERATION (Ref # 27010A)	27010-1048	1
RELAY,TURN SIGNAL (Ref # 27034)	27034-003	1
RELAY,HAZARD (Ref # 27034A)	27034-005	1

## 2000 Police 1000 PARTS LIST

Chassis Electrical Equipment

ITEM NAME	PART NUMBER	QUANTITY
DAMPER,RELAY (Ref # 27035)	27035-001	1
DIODE (Ref # 49018)	49018-1052	1
BOLT-FLANGED (Ref # 130)	130D0814	1
BOLT-UPSET-WSP (Ref # 187)	187B0622	1
BOLT-UPSET-WSP (Ref # 187A)	187B0635	1
SCREW-PAN-WSP-CROS (Ref # 225)	225B0620	1
NUT-HEX,6MM (Ref # 312)	312B0600	1
WASHER-SPRING,6MM (Ref # 461)	461F0600	1
BOLT,6X10 (Ref # 92001)	92001-137	1
CLAMP,WIRING HARNESS,L=60 (Ref # 92037)	92037-1069	1
BAND,L=149 (Ref # 92072)	92072-031	1
BAND,L=218 (Ref # 92072A)	92072-032	1
BAND,L=186 (Ref # 92072B)	92072-056	1
BAND,L=185 (Ref # 92072C)	92072-1195	1
SPRING,BRAKE SWITCH (Ref # 92081)	92081-1366	1