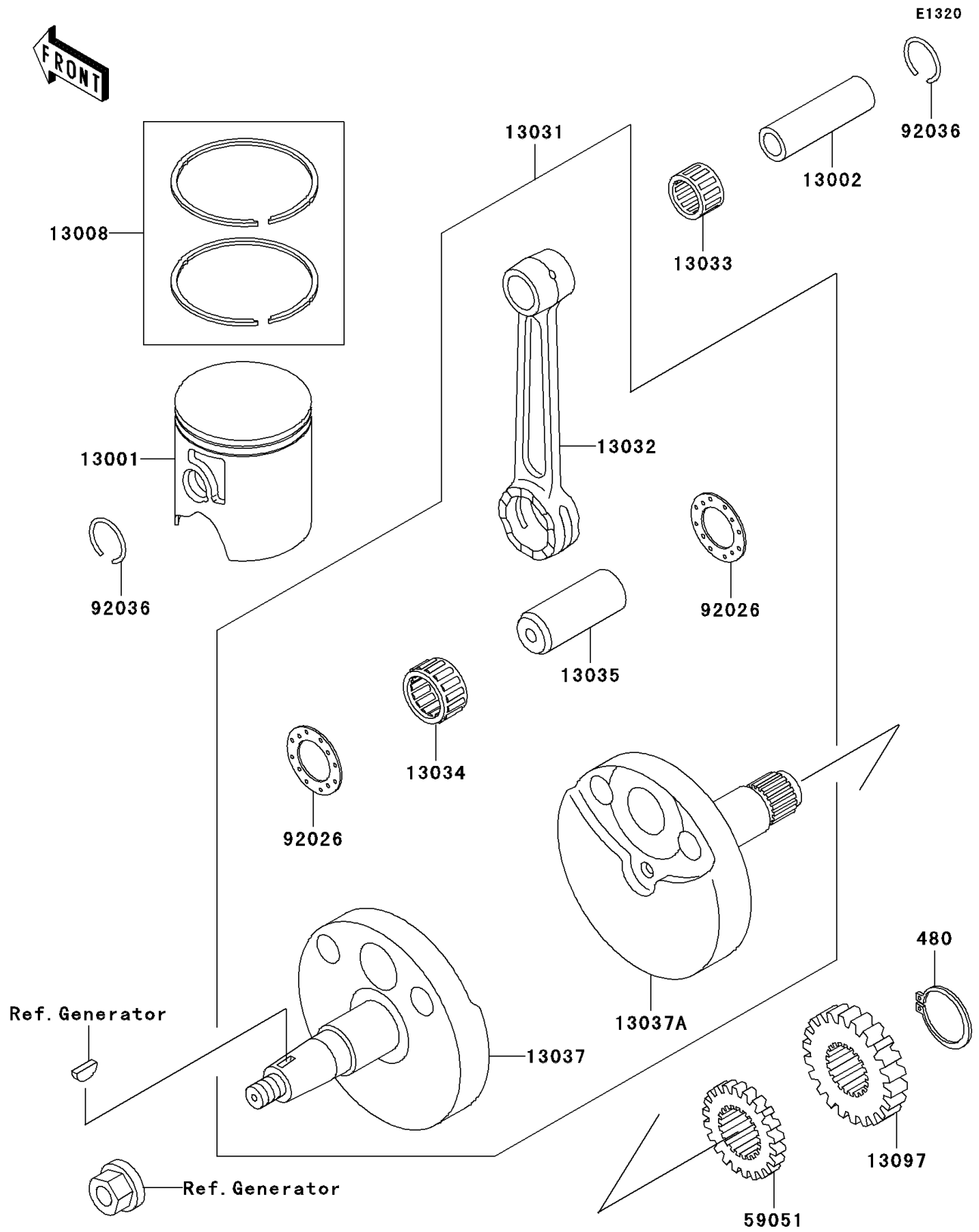


## 2005 KX™65 PARTS DIAGRAM

Crankshaft/Piston(s)



## 2005 KX™65 PARTS LIST

Crankshaft/Piston(s)

| ITEM NAME                             | PART NUMBER | QUANTITY |
|---------------------------------------|-------------|----------|
| CIRCLIP-TYPE-C,16MM (Ref # 480)       | 480J1600    | 1        |
| PISTON-ENGINE,B (Ref # 13001)         | 13001-0040  | 1        |
| PIN-PISTON (Ref # 13002)              | 13002-1119  | 1        |
| RING-SET-PISTON (Ref # 13008)         | 13008-1199  | 1        |
| CRANKSHAFT-COMP (Ref # 13031)         | 13031-1467  | 1        |
| ROD-CONNECTING (Ref # 13032)          | 13032-1246  | 1        |
| BEARING-NEEDLE,72KTV030 (Ref # 13033) | 13033-028   | 1        |
| BEARING-BIG END,B4 (Ref # 13034)      | 13034-1107  | 1        |
| PIN-CRANK (Ref # 13035)               | 13035-1002  | 1        |
| CRANKSHAFT,LH (Ref # 13037)           | 13037-1615  | 1        |
| CRANKSHAFT,RH (Ref # 13037A)          | 13037-1616  | 1        |
| GEAR-PRIMARY SPUR,22T (Ref # 13097)   | 13097-1413  | 1        |
| GEAR-SPUR,PUMP,23T (Ref # 59051)      | 59051-1146  | 1        |
| SPACER (Ref # 92026)                  | 92026-1522  | 1        |
| RING-SNAP,PISTON PIN (Ref # 92036)    | 92036-007   | 1        |