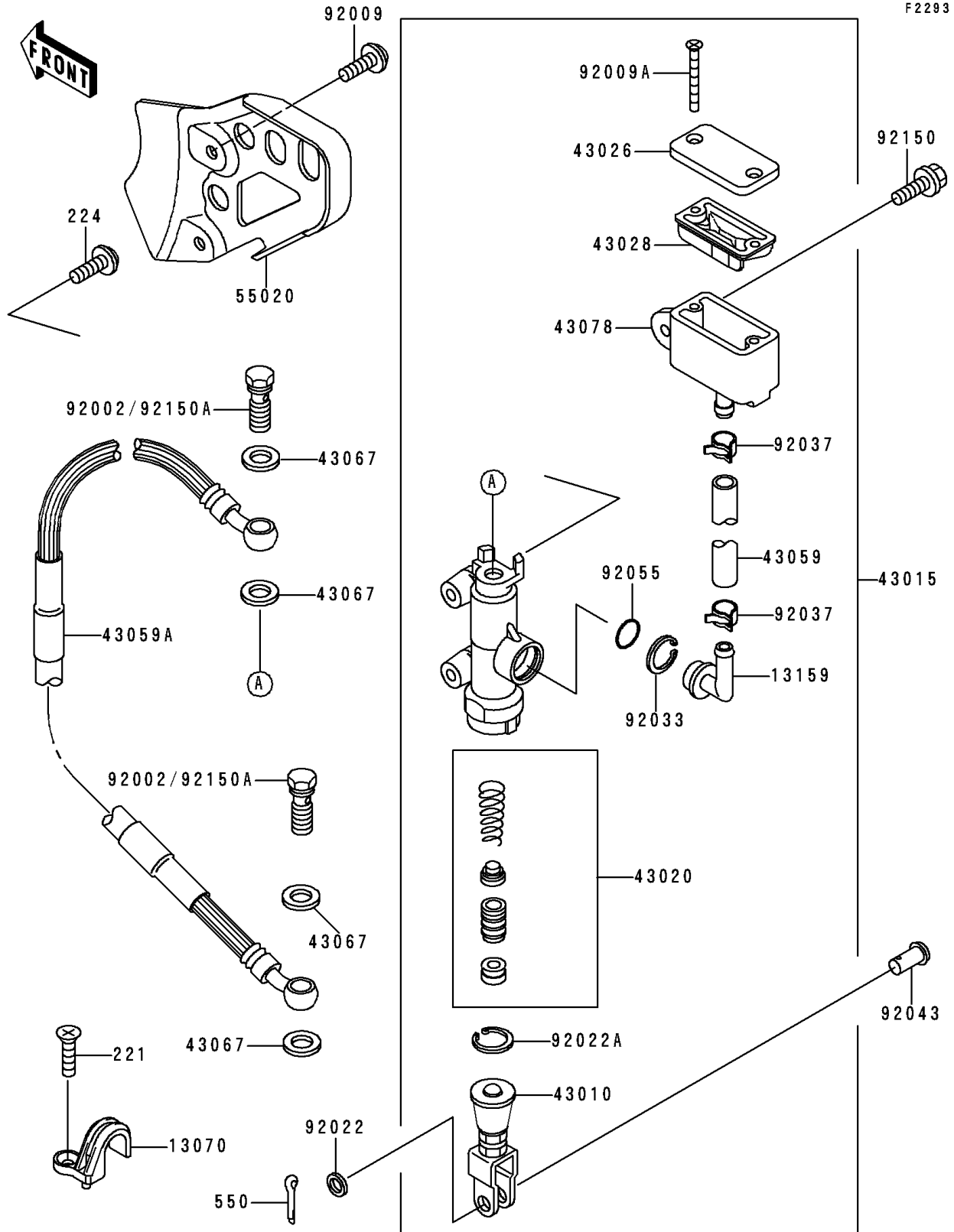


1995 KX™250 PARTS DIAGRAM

Rear Master Cylinder



1995 KX™250 PARTS LIST

Rear Master Cylinder

| ITEM NAME | PART NUMBER | QUANTITY |
|--|-------------|----------|
| SCREW-CSK-CROS (Ref # 221) | 221B0510 | 1 |
| SCREW-PAN-WP-CROS (Ref # 224) | 224B0614 | 1 |
| PIN-COTTER,2.0X15 (Ref # 550) | 550D2015 | 1 |
| GUIDE,HOSE (Ref # 13070) | 13070-1275 | 1 |
| CONNECTOR (Ref # 13159) | 13159-1056 | 1 |
| ROD-ASSY-BRAKE (Ref # 43010) | 43010-1068 | 1 |
| CYLINDER-ASSY-MASTER,RR (Ref # 43015) | 43015-1515 | 1 |
| PISTON-COMP-BRAKE (Ref # 43020) | 43020-1094 | 1 |
| CAP-BRAKE (Ref # 43026) | 43026-1075 | 1 |
| DIAPHRAGM (Ref # 43028) | 43028-1067 | 1 |
| HOSE-BRAKE (Ref # 43059) | 43059-1561 | 1 |
| HOSE-BRAKE,RR (Ref # 43059A) | 43059-1867 | 1 |
| WASHER,10.5X15X1.5 (Ref # 43067) | 43067-001 | 1 |
| RESERVOIR (Ref # 43078) | 43078-1122 | 1 |
| GUARD,RR M/CYLINDER&OIL TANK (Ref # 55020) | 55020-1487 | 1 |
| BOLT,OIL,L=23 (Ref # 92002) | 92002-1888 | 1 |
| SCREW,6X10,WHITE (Ref # 92009) | 92009-1286 | 1 |
| SCREW,4X40 (Ref # 92009A) | 92009-1596 | 1 |
| WASHER,8.5X13X1 (Ref # 92022) | 92022-1028 | 1 |
| WASHER,CIRCRIP (Ref # 92022A) | 92022-1601 | 1 |
| RING-SNAP,20.5MM (Ref # 92033) | 92033-1186 | 1 |
| CLAMP (Ref # 92037) | 92037-1710 | 1 |
| PIN (Ref # 92043) | 92043-1039 | 1 |
| RING-O,MASTER CYLINDER (Ref # 92055) | 92055-1251 | 1 |
| BOLT,FLANGED,6X25 (Ref # 92150) | 92150-1507 | 1 |
| BOLT,OIL,L=23 (Ref # 92150A) | 92150-1886 | 1 |