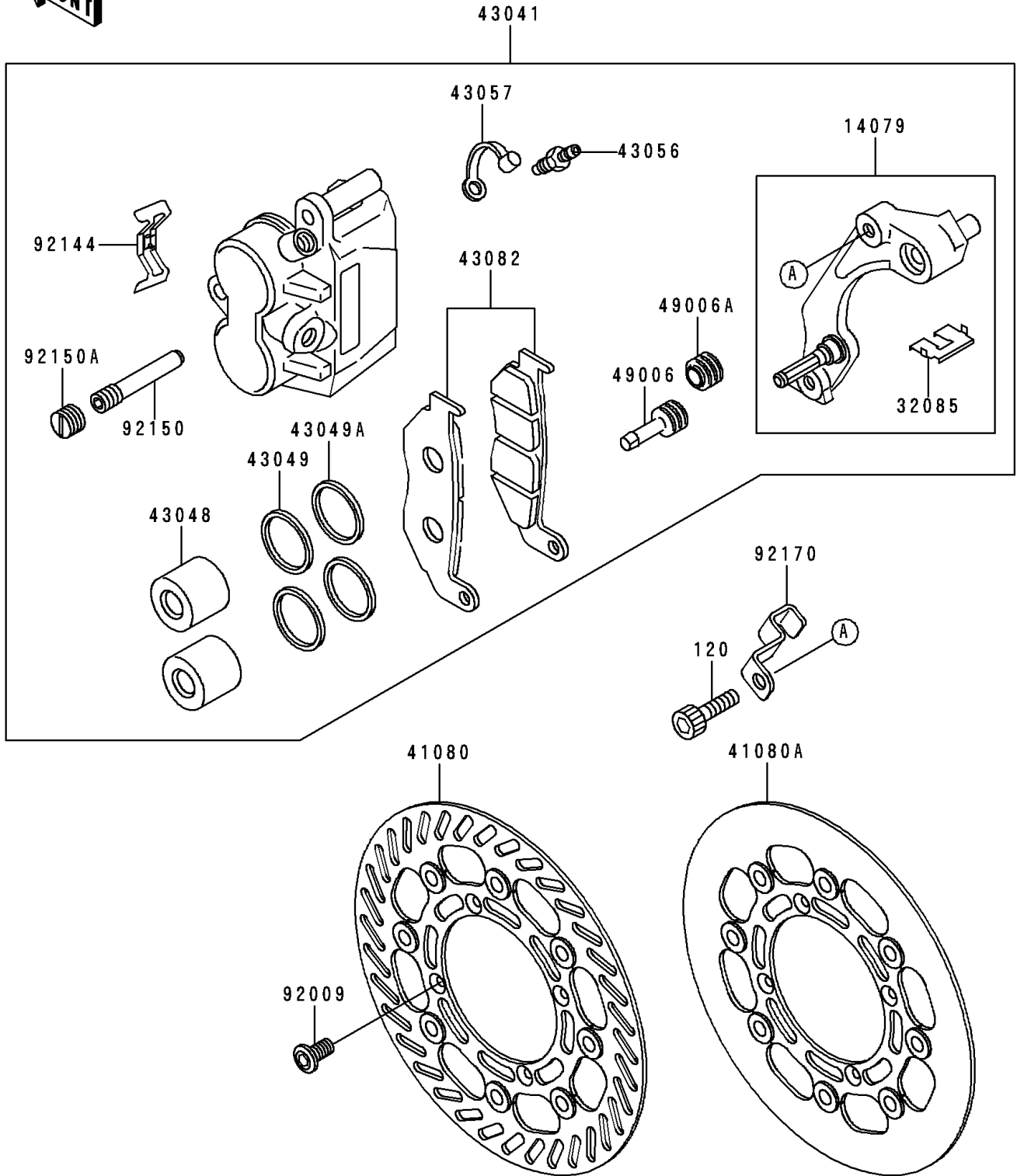


1994 KX™125 PARTS DIAGRAM

Front Brake

F2292



1994 KX™125 PARTS LIST

Front Brake

| ITEM NAME | PART NUMBER | QUANTITY |
|---|-------------|----------|
| BOLT-SOCKET,8X40 (Ref # 120) | 120P0840 | 1 |
| HOLDER-ASSY,FRONT CALIPER (Ref # 14079) | 14079-1097 | 1 |
| STOPPER,PAD (Ref # 32085) | 32085-1361 | 1 |
| DISC,FR (Ref # 41080) | 41080-1354 | 1 |
| DISC,FR (Ref # 41080A) | 41080-1365 | 1 |
| CALIPER-ASSY,FR,LH (Ref # 43041) | 43041-1531 | 1 |
| PISTON-CALIPER (Ref # 43048) | 43048-1064 | 1 |
| PACKING,PISTON SEAL (Ref # 43049) | 43049-1060 | 1 |
| PACKING,PISTON SEAL (Ref # 43049A) | 43049-1061 | 1 |
| BREATHER-BRAKE (Ref # 43056) | 43056-1055 | 1 |
| CAP-BREATHER (Ref # 43057) | 43057-1001 | 1 |
| PAD-ASSY-BRAKE (Ref # 43082) | 43082-1149 | 1 |
| BOOT,CALIPER (Ref # 49006) | 49006-1088 | 1 |
| BOOT,CALIPER (Ref # 49006A) | 49006-1242 | 1 |
| SCREW,6X14 (Ref # 92009) | 92009-1546 | 1 |
| SPRING,PAD (Ref # 92144) | 92144-1721 | 1 |
| BOLT,HANGER (Ref # 92150) | 92150-1691 | 1 |
| BOLT,PLUG (Ref # 92150A) | 92150-1692 | 1 |
| CLAMP,HOSE (Ref # 92170) | 92170-1404 | 1 |