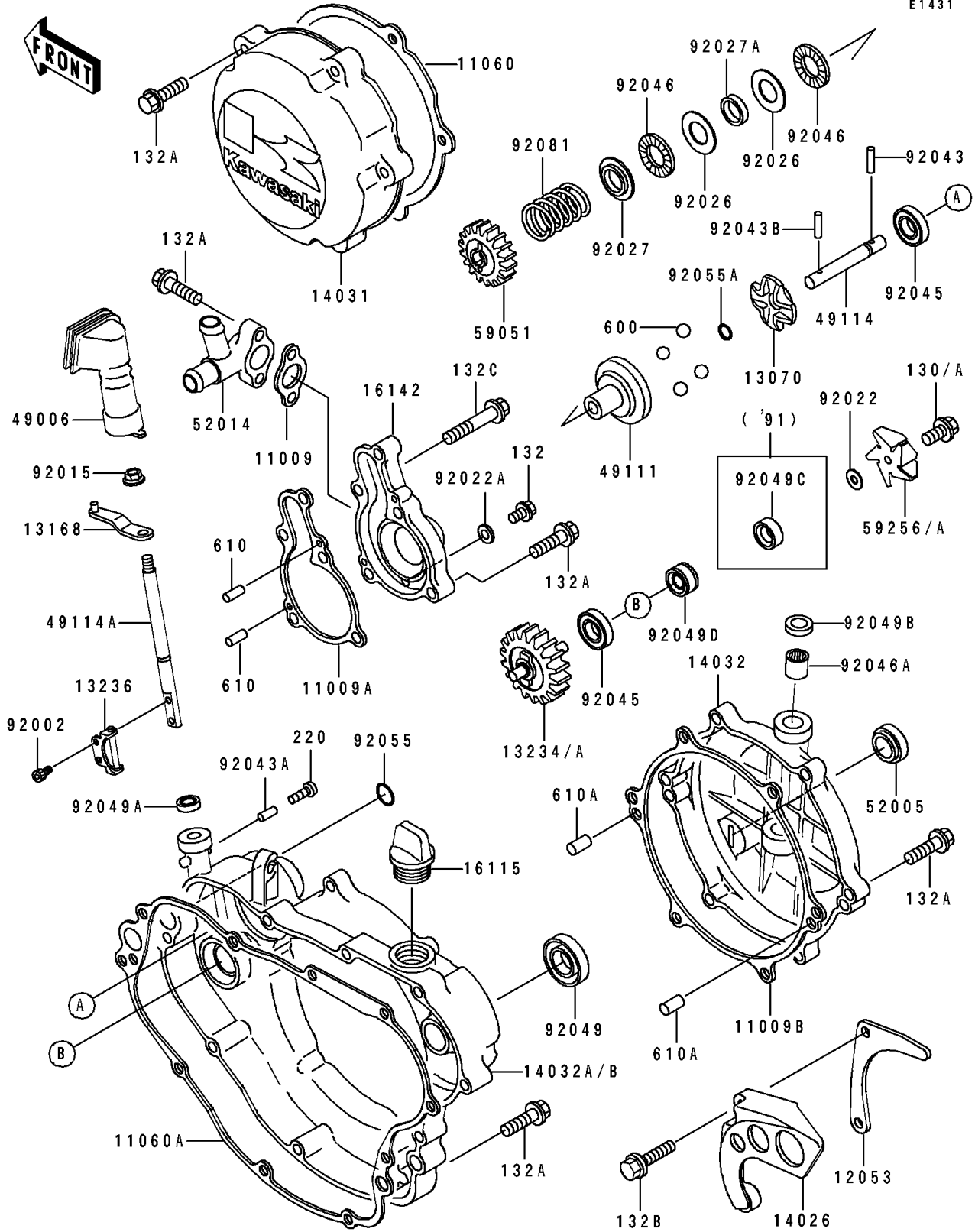


## 1990 KX™125 PARTS DIAGRAM

Engine Cover

E1431



## 1990 KX™125 PARTS LIST

Engine Cover

| ITEM NAME                            | PART NUMBER | QUANTITY |
|--------------------------------------|-------------|----------|
| GASKET,ELBOW (Ref # 11009)           | 11009-1696  | 1        |
| GASKET,PUMP COVER (Ref # 11009A)     | 11009-1697  | 1        |
| GASKET,RELESASE COVER (Ref # 11009B) | 11009-1814  | 1        |
| GASKET,GENERATOR COVER (Ref # 11060) | 11009-1695  | 1        |
| GASKET,CLUTCH COVER (Ref # 11060A)   | 11009-1693  | 1        |
| GUIDE-CHAIN (Ref # 12053)            | 12053-1206  | 1        |
| GUIDE (Ref # 13070)                  | 13070-1122  | 1        |
| LEVER,GOVERNOR (Ref # 13168)         | 13168-1371  | 1        |
| SHAFT-COMP,PUMP (Ref # 13234)        | 13234-1082  | 1        |
| LEVER-COMP,GOVERNOR (Ref # 13236)    | 13236-1182  | 1        |
| COVER-CHAIN (Ref # 14026)            | 14026-1158  | 1        |
| COVER-GENERATOR (Ref # 14031)        | 14031-1217  | 1        |
| COVER-CLUTCH (Ref # 14032)           | 14032-1266  | 1        |
| COVER-CLUTCH (Ref # 14032A)          | 14032-1268  | 1        |
| CAP-OIL FILLER (Ref # 16115)         | 16115-018   | 1        |
| COVER-PUMP (Ref # 16142)             | 16142-1084  | 1        |
| BOOT,GOVERNOR (Ref # 49006)          | 49006-1228  | 1        |
| HOLDER-GOVERNOR WEIGHT (Ref # 49111) | 49111-1051  | 1        |
| SHAFT-GOVERNOR (Ref # 49114)         | 49114-1058  | 1        |
| SHAFT-GOVERNOR (Ref # 49114A)        | 49114-1064  | 1        |
| GAUGE,OIL LEVEL (Ref # 52005)        | 52005-1055  | 1        |
| ELBOW (Ref # 52014)                  | 52014-1071  | 1        |
| GEAR-SPUR,GOVERNOR,19T (Ref # 59051) | 59051-1181  | 1        |
| IMPELLER (Ref # 59256A)              | 59256-1067  | 1        |
| BOLT,SOCKET,4X8 (Ref # 92002)        | 92002-1403  | 1        |
| NUT,6MM (Ref # 92015)                | 92015-1572  | 1        |
| WASHER,5.2X13X1 (Ref # 92022)        | 92022-1380  | 1        |
| WASHER,6.2X11X1 (Ref # 92022A)       | 92022-304   | 1        |
| SPACER,15X28X1 (Ref # 92026)         | 92026-1238  | 1        |

## 1990 KX™125 PARTS LIST

Engine Cover

| ITEM NAME                              | PART NUMBER | QUANTITY |
|--|-------------|----------|
| COLLAR (Ref # 92027)                   | 92027-1838  | 1        |
| COLLAR,15.2X17X4 (Ref # 92027A)        | 92027-1839  | 1        |
| PIN,3X12.8 (Ref # 92043)               | 92043-1256  | 1        |
| PIN,2X9.8 (Ref # 92043A)               | 92043-1293  | 1        |
| PIN,3X19.8 (Ref # 92043B)              | 92043-1319  | 1        |
| BEARING-BALL (Ref # 92045)             | 92045-1212  | 1        |
| BEARING-NEEDLE,AXK1102 (Ref # 92046)   | 92046-1052  | 1        |
| BEARING-NEEDLE (Ref # 92046A)          | 92046-1176  | 1        |
| SEAL-OIL,SB16244 (Ref # 92049)         | 92049-002   | 1        |
| SEAL-OIL,SD08144 (Ref # 92049A)        | 92049-1207  | 1        |
| SEAL-OIL (Ref # 92049B)                | 92049-1262  | 1        |
| SEAL-OIL,MHSD8X18X10J-1 (Ref # 92049D) | 92049-1366  | 1        |
| RING-O,16.8X2.4 (Ref # 92055)          | 92055-1258  | 1        |
| RING-O,5.5X1.5 (Ref # 92055A)          | 92055-1343  | 1        |
| SPRING,GOVERNOR (Ref # 92081)          | 92081-1769  | 1        |
| BOLT-FLANGED (Ref # 130)               | 130P0510    | 1        |
| BOLT-FLANGED-SMALL (Ref # 132)         | 132G0608    | 1        |
| BOLT-FLANGED-SMALL (Ref # 132A)        | 132G0625    | 1        |
| BOLT-FLANGED-SMALL (Ref # 132B)        | 132G0630    | 1        |
| BOLT-FLANGED-SMALL (Ref # 132C)        | 132G0655    | 1        |
| SCREW-PAN-CROS (Ref # 220)             | 220B0306    | 1        |
| BALL-STEEL,5/16" (Ref # 600)           | 600A1000    | 1        |
| ROLLER,4X8 (Ref # 610)                 | 610A0408    | 1        |
| ROLLER,6X12 (Ref # 610A)               | 610A0612    | 1        |