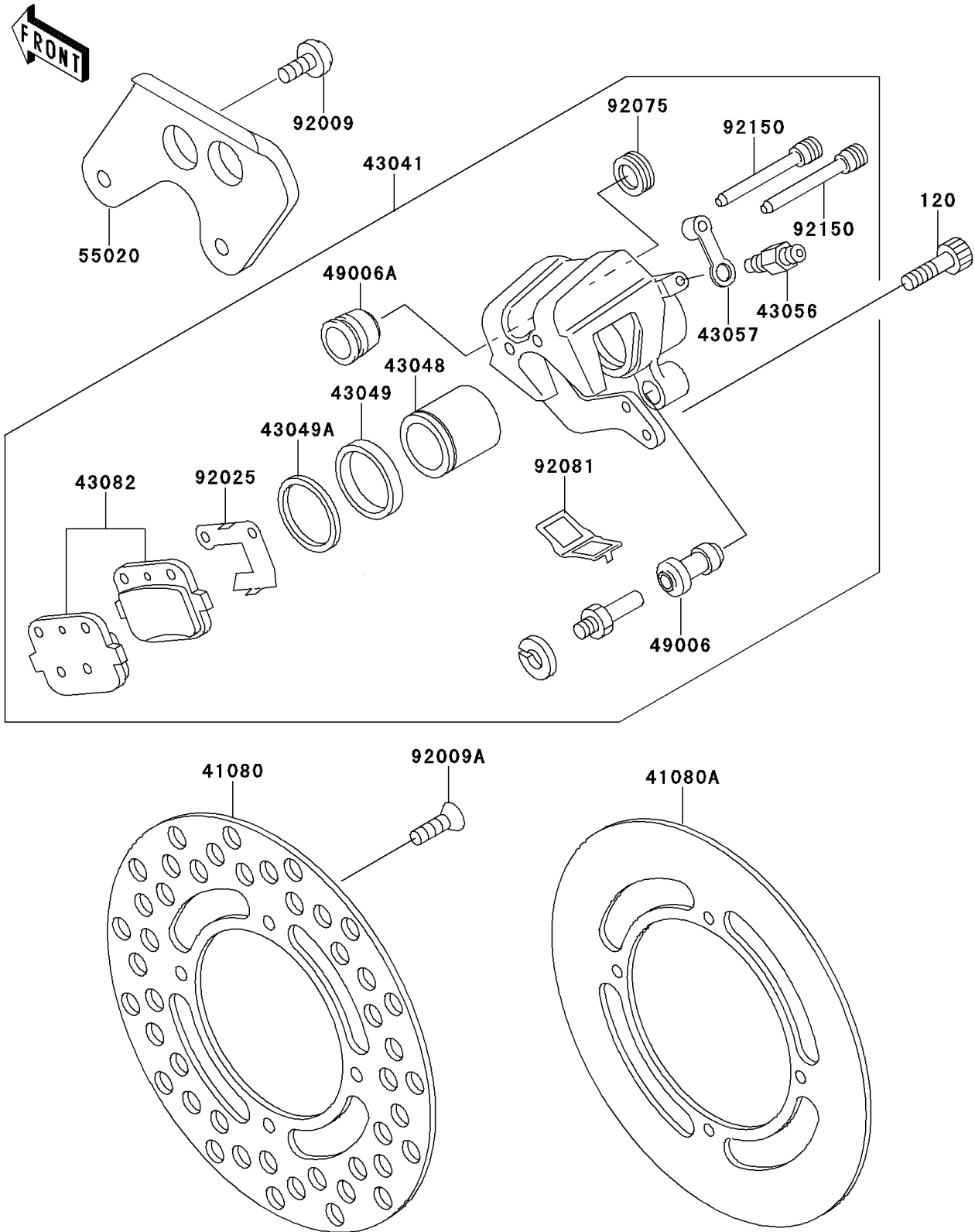


1998 KX™100 PARTS DIAGRAM

Rear Brake

F2294



1998 KX™100 PARTS LIST

Rear Brake

| ITEM NAME | PART NUMBER | QUANTITY |
|-------------------------------------|---------------|----------|
| BOLT-SOCKET (Ref # 120) | 120P0816 | 1 |
| DISC,RR (Ref # 41080) | 41080-1444 | 1 |
| DISC,RR (Ref # 41080A) | 41080-1445 | 1 |
| CALIPER-ASSY,RR (Ref # 43041) | 43041-1638 | 1 |
| PISTON-CALIPER (Ref # 43048) | 43048-1064 | 1 |
| PACKING,PISTON SEAL (Ref # 43049) | 43049-1060 | 1 |
| PACKING,PISTON SEAL (Ref # 43049A) | 43049-1061 | 1 |
| BREATHER-BRAKE (Ref # 43056) | 43056-1055 | 1 |
| CAP-BREATHER (Ref # 43057) | 43057-1001 | 1 |
| PAD-ASSY-BRAKE (Ref # 43082) | 43082-1205 | 1 |
| BOOT,CALIPER (Ref # 49006) | 49006-1088 | 1 |
| BOOT,CALIPER (Ref # 49006A) | 49006-1089 | 1 |
| GUARD,CALIPER,P.WHITE (Ref # 55020) | 55020-1247-6F | 1 |
| SCREW,6X10,WHITE (Ref # 92009) | 92009-1286 | 1 |
| SCREW,6X10 (Ref # 92009A) | 92009-1375 | 1 |
| SHIM,PAD (Ref # 92025) | 92025-1817 | 1 |
| DAMPER (Ref # 92075) | 92075-1414 | 1 |
| SPRING,PAD (Ref # 92081) | 92081-1502 | 1 |
| BOLT (Ref # 92150) | 92150-1144 | 1 |