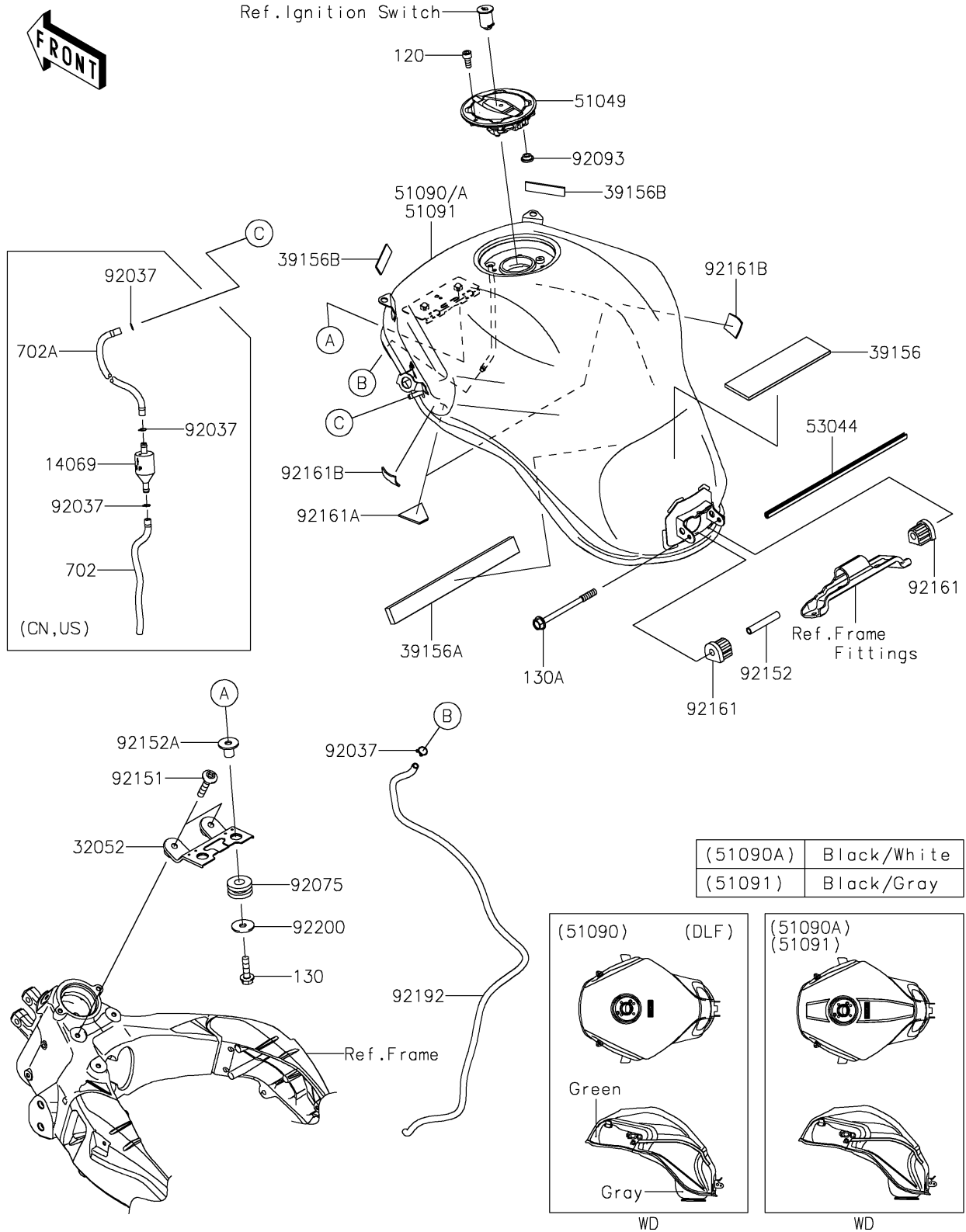


2019 PARTS DIAGRAM

Fuel Tank

F2410



2019 PARTS LIST

Fuel Tank

ITEM NAME	PART NUMBER	QUANTITY
BOLT-SOCKET,5X12 (Ref # 120)	120CA0512	1
BOLT-FLANGED,6X22 (Ref # 130)	130BA0622	1
BOLT-FLANGED,6X70 (Ref # 130A)	130BB0670	1
BREATHER,TANK (Ref # 14069)	14069-0008	1
BRACKET-TANK,F.S.BLACK (Ref # 32052)	32052-0749-18R	1
PAD,FUEL TANK,RR (Ref # 39156)	39156-0982	1
PAD,25X260X10 (Ref # 39156A)	39156-1866	1
PAD,15X60X2 (Ref # 39156B)	39156-2448	1
CAP-TANK (Ref # 51049)	51049-0735	1
TANK-COMP-FUEL,M.F.S.BLACK+WHT (Ref # 51090A)	51090-5487-J11	1
TRIM (Ref # 53044)	53044-1296	1
TUBE-RUBBER,6X200 (Ref # 702)	702A06200	1
TUBE-RUBBER,6X9X450 (Ref # 702A)	702A06450	1
CLAMP,TUBE (Ref # 92037)	92037-010	2
DAMPER,10X24X12 (Ref # 92075)	92075-1690	1
SEAL,FUEL TANK CAP (Ref # 92093)	92093-1030	1
BOLT,SOCKET,6X30 (Ref # 92151)	92151-1605	1
COLLAR,6.8X10X60 (Ref # 92152)	92152-1182	1
COLLAR,6.3X9.5X14.1 (Ref # 92152A)	92152-1847	1
DAMPER,FUEL TANK,RR (Ref # 92161)	92161-1330	1
DAMPER,30X48X3 (Ref # 92161A)	92161-1768	1
DAMPER,25X25X2 (Ref # 92161B)	92161-1770	1
TUBE,6X9X926(30) (Ref # 92192)	92192-1024	1
WASHER,6.5X22X1.6 (Ref # 92200)	92200-1087	1