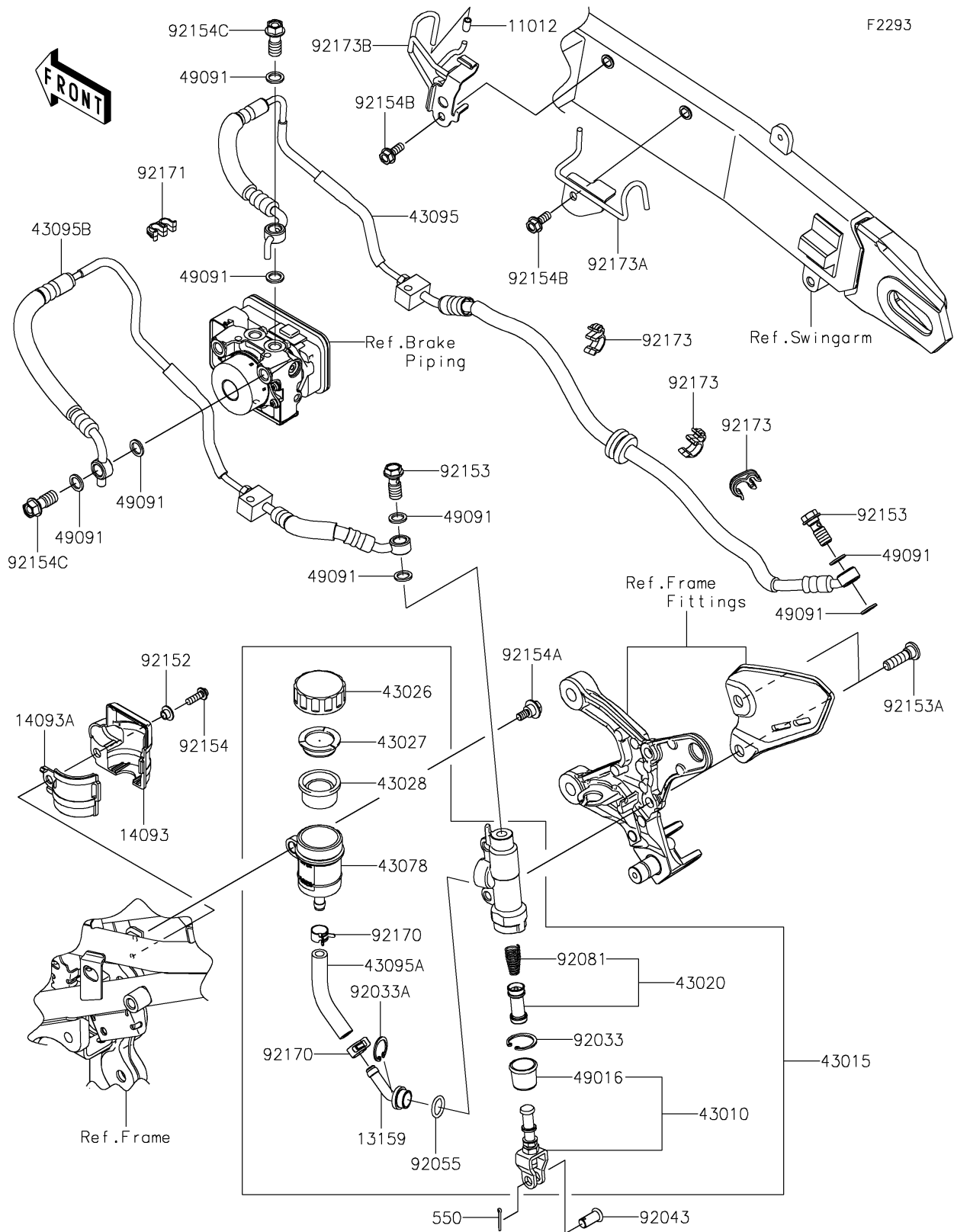


## 2019 PARTS DIAGRAM

### Rear Master Cylinder



## 2019 PARTS LIST

Rear Master Cylinder

ITEM NAME	PART NUMBER	QUANTITY
CAP (Ref # 11012)	11012-1438	1
CONNECTOR (Ref # 13159)	13159-0008	1
COVER,RR RESERVOIR,OUTER (Ref # 14093)	14093-0653	1
COVER,RR RESERVOIR,INNER (Ref # 14093A)	14093-0654	1
ROD-ASSY-BRAKE (Ref # 43010)	43010-0020	1
CYLINDER-ASSY-MASTER,RR (Ref # 43015)	43015-0664	1
PISTON-COMP-BRAKE (Ref # 43020)	43020-1057	1
CAP-BRAKE (Ref # 43026)	43026-0009	1
PLATE-DIAPHRAGM (Ref # 43027)	43027-1053	1
DIAPHRAGM (Ref # 43028)	43028-1065	1
RESERVOIR (Ref # 43078)	43078-0060	1
HOSE-BRAKE,ABS UNIT-RR CALIPER (Ref # 43095)	43095-1481	1
HOSE-BRAKE (Ref # 43095A)	43095-1496	1
HOSE-BRAKE,RR M/CYL.-ABS UNIT (Ref # 43095B)	43095-1517	1
COVER-SEAL,BRAKE PISTON (Ref # 49016)	49016-1103	1
WASHER-SEAL,10.1X14.5X1.5 (Ref # 49091)	49091-0001	1
PIN-COTTER,2.0X15 (Ref # 550)	550AA2015	1
RING-SNAP,20.9X24.6X1.2 (Ref # 92033)	92033-0079	1
RING-SNAP,20.5MM (Ref # 92033A)	92033-1186	1
PIN,8X17 (Ref # 92043)	92043-0104	1
RING-O,14.8X2.4 (Ref # 92055)	92055-0741	1
SPRING,MASTER CYLINDER (Ref # 92081)	92081-1737	1
COLLAR,5.3X7.3X5.3 (Ref # 92152)	92152-2190	1
BOLT,OIL,L=23 (Ref # 92153)	92153-0627	1
BOLT,SOCKET,8X30 (Ref # 92153A)	92153-1624	1
BOLT,SOCKET,5X16 (Ref # 92154)	92154-0209	1
BOLT,FLANGED,6X16 (Ref # 92154A)	92154-0385	1
BOLT,FLANGED,6X16 (Ref # 92154B)	92154-0899	1
BOLT,BANJO,10X22 (Ref # 92154C)	92154-1138	1

## 2019 PARTS LIST

Rear Master Cylinder

ITEM NAME	PART NUMBER	QUANTITY
CLAMP,HOSE (Ref # 92170)	92170-1091	1
CLAMP (Ref # 92171)	92171-0817	1
CLAMP,HOSE & SENSOR (Ref # 92173)	92173-1796	1
CLAMP,SWA,RR (Ref # 92173A)	92173-1801	1
CLAMP,SWA,FR (Ref # 92173B)	92173-1903	1