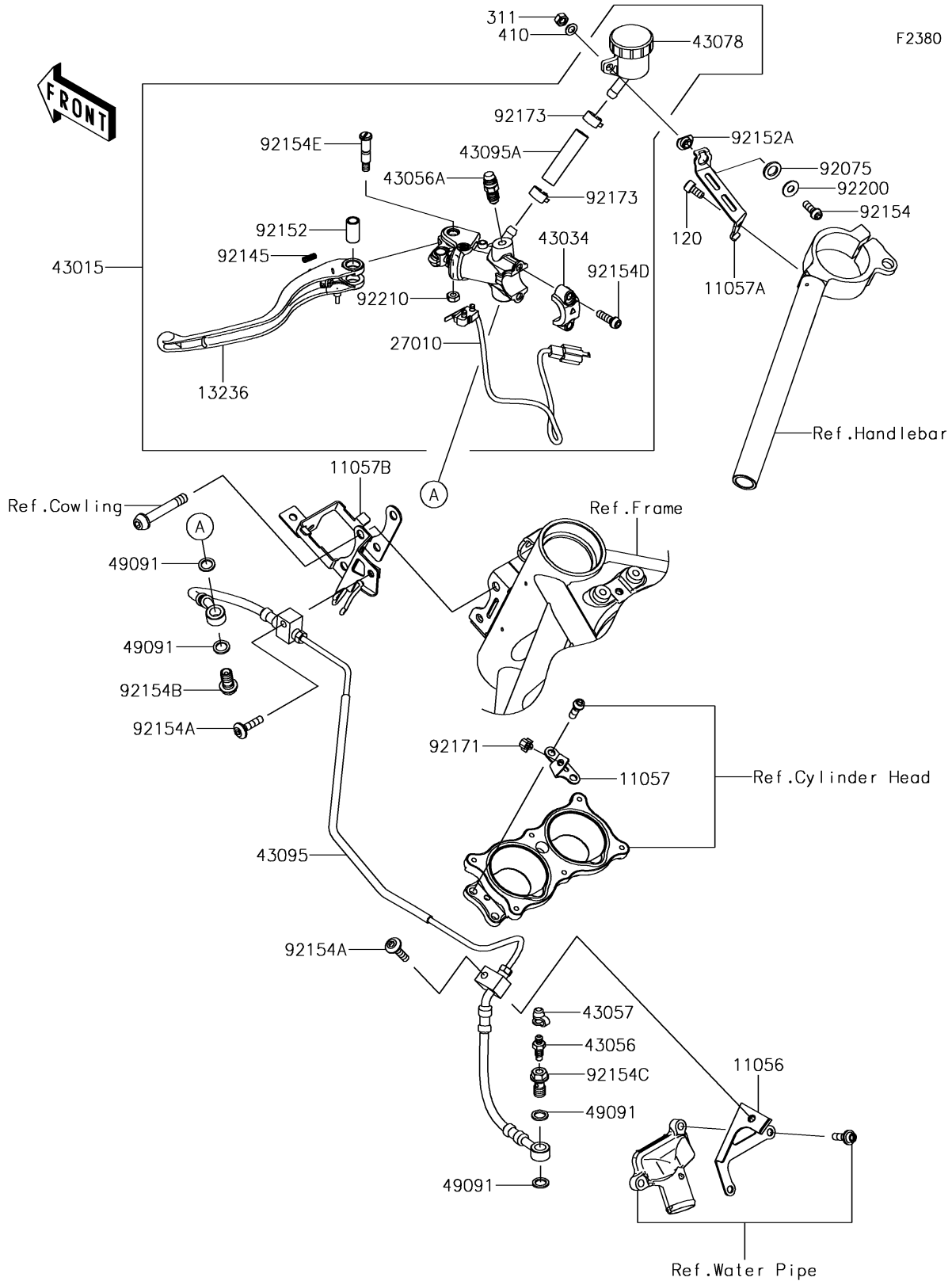


2017 PARTS DIAGRAM

Clutch Master Cylinder



2017 PARTS LIST

Clutch Master Cylinder

ITEM NAME	PART NUMBER	QUANTITY
BRACKET,CYLINDER (Ref # 11056)	11056-7079	1
BRACKET,THROBO. HOLDER (Ref # 11057)	11057-0041	1
BRACKET,RESERVOIR (Ref # 11057A)	11057-0053	1
BRACKET,FRM HEAD (Ref # 11057B)	11057-0567	1
BOLT-SOCKET,6X12 (Ref # 120)	120CB0612	1
LEVER-COMP,CLUTCH (Ref # 13236)	13236-0771	1
SWITCH,STOP (Ref # 27010)	27010-0824	1
NUT-HEX (Ref # 311)	311AC0600	1
WASHER-PLAIN-SMALL (Ref # 410)	410AA0600	1
CYLINDER-ASSY-MASTER,CLUTCH (Ref # 43015)	43015-0669	1
HOLDER-BRAKE (Ref # 43034)	43034-0121	1
BREATHER-BRAKE (Ref # 43056)	43056-0007	1
BREATHER-BRAKE (Ref # 43056A)	43056-0019	1
CAP-BREATHER (Ref # 43057)	43057-003	1
RESERVOIR (Ref # 43078)	43078-0586	1
HOSE-BRAKE,CLUTCH (Ref # 43095)	43095-0893	1
HOSE-BRAKE (Ref # 43095A)	43095-0909	1
WASHER-SEAL,10.1X14.5X1.5 (Ref # 49091)	49091-0001	1
DAMPER (Ref # 92075)	92075-1564	1
SPRING (Ref # 92145)	92145-1683	1
COLLAR,LEVER (Ref # 92152)	92152-2151	1
COLLAR,6.5X10X5.3 (Ref # 92152A)	92152-2225	1
BOLT,SOCKET,6X18 (Ref # 92154)	92154-1455	1
BOLT,SOCKET,6X25 (Ref # 92154A)	92154-1532	1
BOLT,BANJO,10X19 (Ref # 92154B)	92154-1554	1
BOLT,BANJO,10X19,C. RELEASE (Ref # 92154C)	92154-1622	1
BOLT,SOCKET,6X20 (Ref # 92154D)	92154-1644	1
BOLT,LEVER (Ref # 92154E)	92154-1809	1
CLAMP (Ref # 92171)	92171-0939	1

2017 PARTS LIST

Clutch Master Cylinder

ITEM NAME	PART NUMBER	QUANTITY
CLAMP,HOSE (Ref # 92173)	92173-1498	1
WASHER,6.5X16X1.0 (Ref # 92200)	92200-3712	1
NUT,U (Ref # 92210)	92210-1424	1