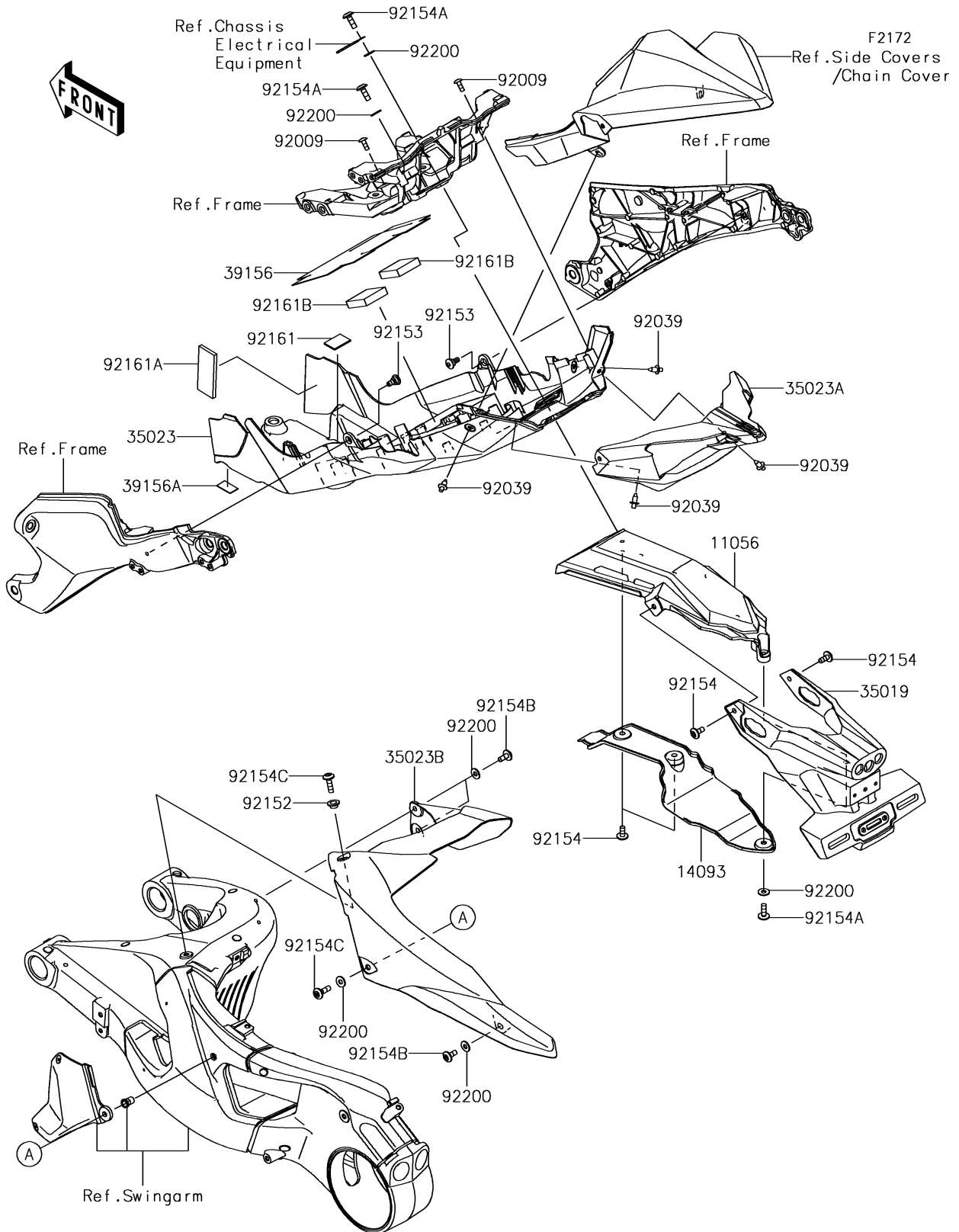


2017 PARTS DIAGRAM

Rear Fender(s)



2017 PARTS LIST

Rear Fender(s)

| ITEM NAME | PART NUMBER | QUANTITY |
|-------------------------------------|-------------|----------|
| BRACKET,FLAP STAY (Ref # 11056) | 11056-4341 | 1 |
| COVER,FLAP STAY BRKT. (Ref # 14093) | 14093-0177 | 1 |
| FLAP (Ref # 35019) | 35019-0616 | 1 |
| FENDER-REAR,FR (Ref # 35023) | 35023-0397 | 1 |
| FENDER-REAR,RR (Ref # 35023A) | 35023-0398 | 1 |
| FENDER-REAR (Ref # 35023B) | 35023-0399 | 1 |
| PAD,195X115X1 (Ref # 39156) | 39156-1884 | 1 |
| PAD,15X25X1 (Ref # 39156A) | 39156-2119 | 1 |
| SCREW,TAPPING,5X14 (Ref # 92009) | 92009-1197 | 1 |
| RIVET (Ref # 92039) | 92039-0068 | 1 |
| COLLAR,6.5X10X6.2 (Ref # 92152) | 92152-2152 | 1 |
| BOLT,SOCKET,6MM (Ref # 92153) | 92153-1956 | 1 |
| BOLT,SOCKET,6X14 (Ref # 92154) | 92154-1025 | 1 |
| BOLT,SOCKET,6X18 (Ref # 92154A) | 92154-1694 | 1 |
| BOLT,SOCKET,6X14 (Ref # 92154B) | 92154-1807 | 1 |
| BOLT,SOCKET,6X22 (Ref # 92154C) | 92154-1810 | 1 |
| DAMPER,30X20X2 (Ref # 92161) | 92161-0833 | 1 |
| DAMPER,30X70X5 (Ref # 92161A) | 92161-1127 | 1 |
| DAMPER,40X40X10 (Ref # 92161B) | 92161-1603 | 1 |
| WASHER,6.2X15X1.2 (Ref # 92200) | 92200-1762 | 1 |