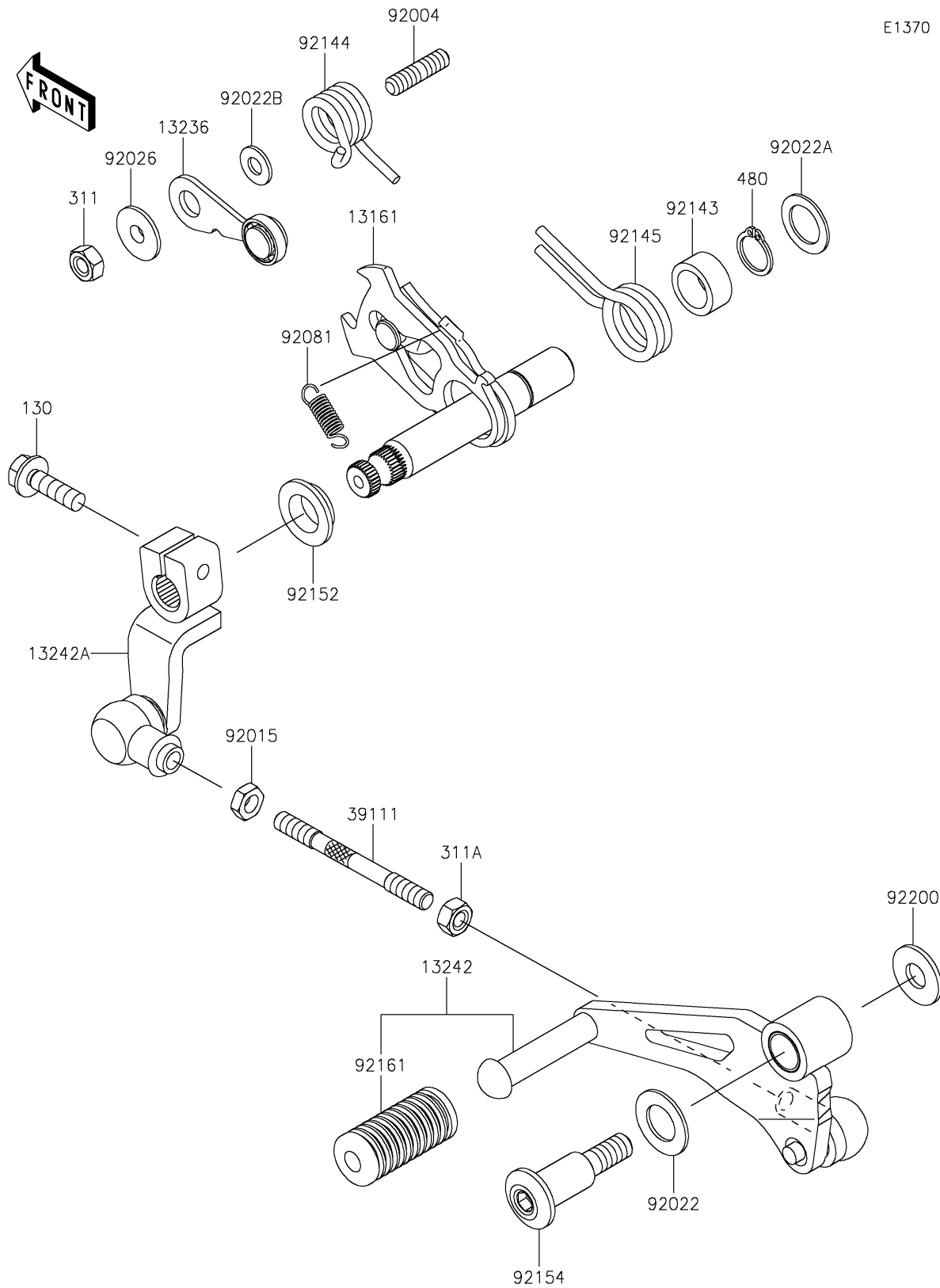


## 2017 Z250SL PARTS DIAGRAM

Gear Change Mechanism

E1370



## 2017 Z250SL PARTS LIST

Gear Change Mechanism

ITEM NAME	PART NUMBER	QUANTITY
BOLT-FLANGED,6X20 (Ref # 130)	130CC0620	1
LEVER-COMP-CHANGE SHAFT (Ref # 13161)	13161-0573	1
LEVER-COMP,POSITION (Ref # 13236)	13236-0170	1
LEVER-ASSY-CHANGE,PEDAL (Ref # 13242)	13242-0106	1
LEVER-ASSY-CHANGE (Ref # 13242A)	13242-0161	1
NUT-HEX,6MM (Ref # 311)	311BA0600	1
NUT-HEX,6MM (Ref # 311A)	311BB0600	1
ROD-TIE (Ref # 39111)	39111-0320	1
CIRCLIP-TYPE-C,13MM (Ref # 480)	480J1300	1
STUD,6X12 (Ref # 92004)	92004-0032	1
NUT,LEFT HANDED,6MM (Ref # 92015)	92015-1178	1
WASHER,12.5X22X1.2 (Ref # 92022)	92022-072	1
WASHER,13.3X20X1 (Ref # 92022A)	92022-1496	1
WASHER,6X12.8X1.2 (Ref # 92022B)	92022-1827	1
SPACER (Ref # 92026)	92026-1217	1
SPRING,CHANGE LEVER (Ref # 92081)	92081-076	1
COLLAR (Ref # 92143)	92143-1148	1
SPRING (Ref # 92144)	92144-1695	1
SPRING,RETURN (Ref # 92145)	92145-0973	1
COLLAR (Ref # 92152)	92152-1794	1
BOLT (Ref # 92154)	92154-1305	1
DAMPER,CHANGE PEDAL (Ref # 92161)	92161-1300	1
WASHER,8.5X20X1.6 (Ref # 92200)	92200-0490	1