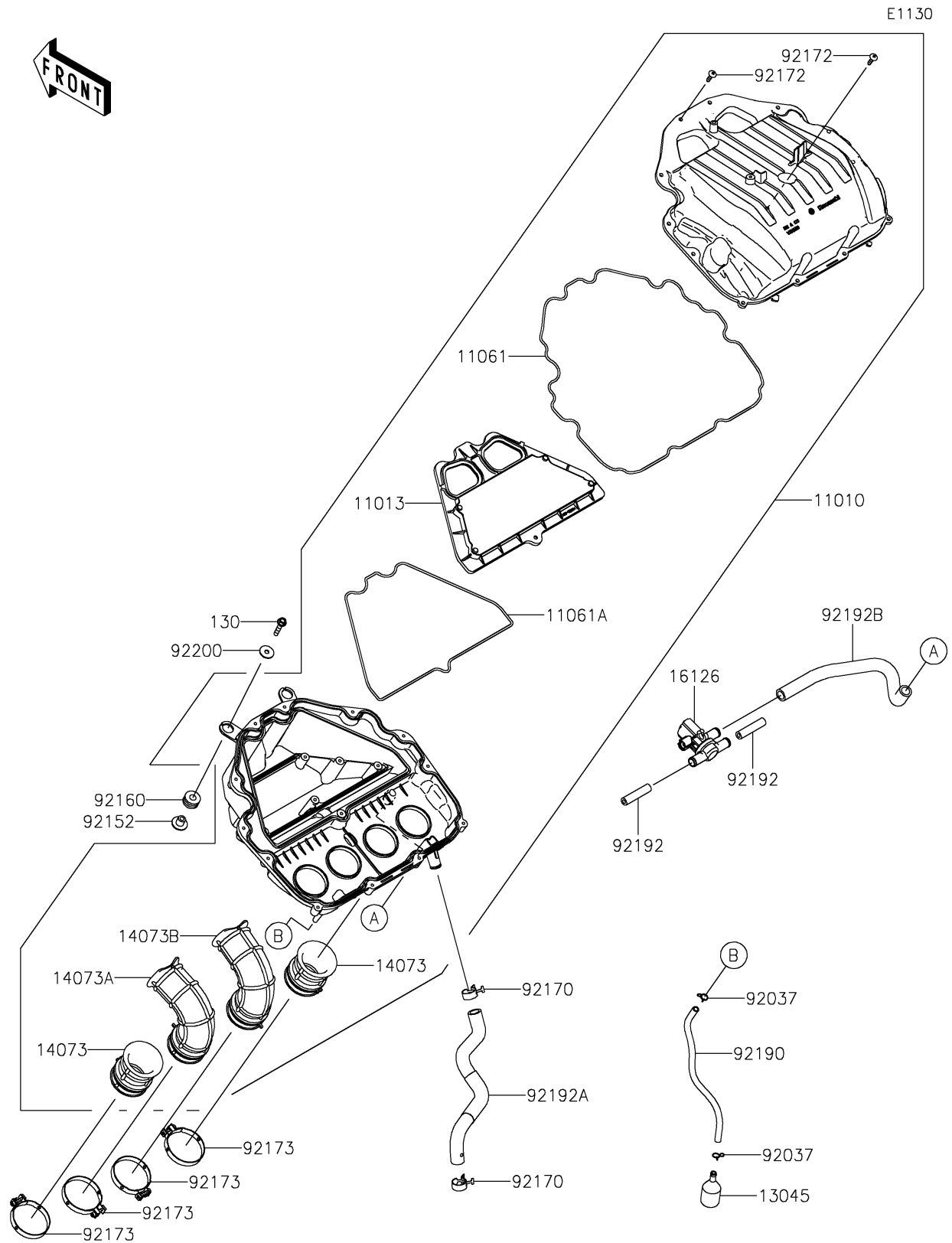


## 2018 Z900 PARTS DIAGRAM

Air Cleaner



## 2018 Z900 PARTS LIST

Air Cleaner

ITEM NAME	PART NUMBER	QUANTITY
FILTER-ASSY-AIR (Ref # 11010)	11010-0878	1
ELEMENT-AIR FILTER (Ref # 11013)	11013-0760	1
GASKET,CASE (Ref # 11061)	11061-1215	1
GASKET,ELEMENT (Ref # 11061A)	11061-1216	1
BOLT-FLANGED,6X30 (Ref # 130)	130BB0630	1
RECEIVER-OIL (Ref # 13045)	13045-1057	1
DUCT,#1,#4 (Ref # 14073)	14073-0852	1
DUCT,#2 (Ref # 14073A)	14073-0853	1
DUCT,#3 (Ref # 14073B)	14073-0854	1
VALVE,AIR SWITCHING (Ref # 16126)	16126-0745	1
CLAMP (Ref # 92037)	92037-1712	1
COLLAR,6.5X10.5X13.1 (Ref # 92152)	92152-0547	1
DAMPER (Ref # 92160)	92160-1162	1
CLAMP (Ref # 92170)	92170-1060	1
SCREW,TAPPING,5X20 (Ref # 92172)	92172-0483	1
CLAMP,58MM (Ref # 92173)	92173-0927	1
TUBE,6X9X300 (Ref # 92190)	92190-1253	1
TUBE,HEAD-ASWV (Ref # 92192)	92192-0843	1
TUBE,BLOWBY (Ref # 92192A)	92192-1692	1
TUBE,ASV-A/C (Ref # 92192B)	92192-1693	1
WASHER,6.5X22X1.6 (Ref # 92200)	92200-1087	1