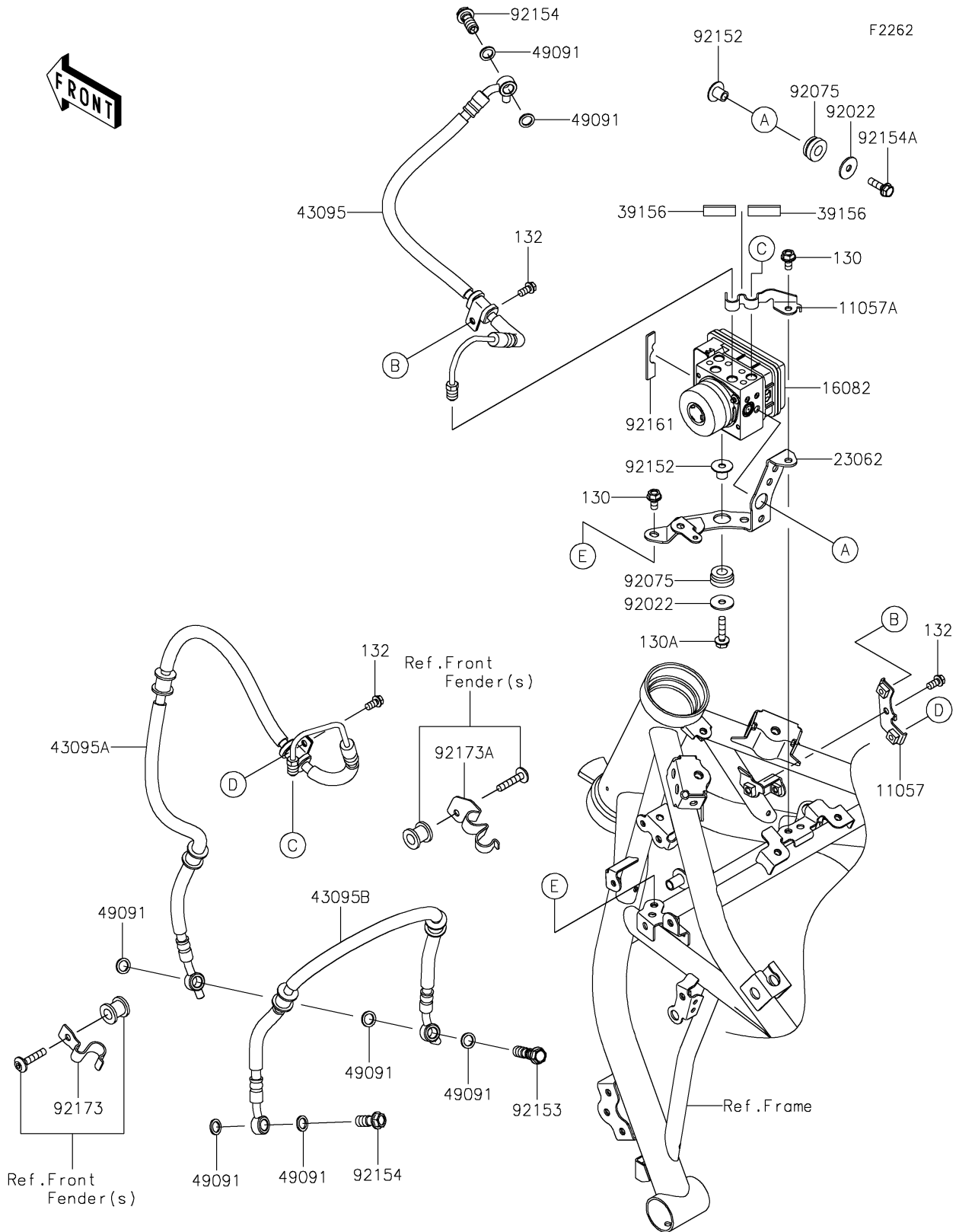


2017 PARTS DIAGRAM

Brake Piping



2017 PARTS LIST

Brake Piping

ITEM NAME	PART NUMBER	QUANTITY
BRACKET,BRAKE HOSE (Ref # 11057)	11057-0275	1
BRACKET,BRAKE PIPE (Ref # 11057A)	11057-0771	1
BOLT-FLANGED,6X12 (Ref # 130)	130BA0612	1
BOLT-FLANGED,6X25 (Ref # 130A)	130BB0625	1
BOLT-FLANGED-SMALL,6X12 (Ref # 132)	132BA0612	1
PUMP-ASSY-OIL,ABS (Ref # 16082)	16082-0767	1
BRACKET-COMP,ABS UNIT (Ref # 23062)	23062-0874	1
PAD,10X70X3 (Ref # 39156)	39156-2203	1
HOSE-BRAKE,FR M/CYL.-ABS UNIT (Ref # 43095)	43095-0958	1
HOSE-BRAKE,ABS UNIT-FR CAL. (Ref # 43095A)	43095-0959	1
HOSE-BRAKE,FR CAL-CAL (Ref # 43095B)	43095-0960	1
WASHER-SEAL,10.1X14.5X1.5 (Ref # 49091)	49091-0001	1
WASHER,6.5X22X1.6 (Ref # 92022)	92022-237	1
DAMPER (Ref # 92075)	92075-277	1
COLLAR,6.5X20X12 (Ref # 92152)	92152-2262	1
BOLT,OIL,L=37 (Ref # 92153)	92153-0628	1
BOLT,OIL,L=23 (Ref # 92154)	92154-0226	1
BOLT,FLANGED,6X20 (Ref # 92154A)	92154-0776	1
DAMPER (Ref # 92161)	92161-1902	1
CLAMP,FR FENDER,LH (Ref # 92173)	92173-1611	1
CLAMP,FR FENDER,RH (Ref # 92173A)	92173-1612	1