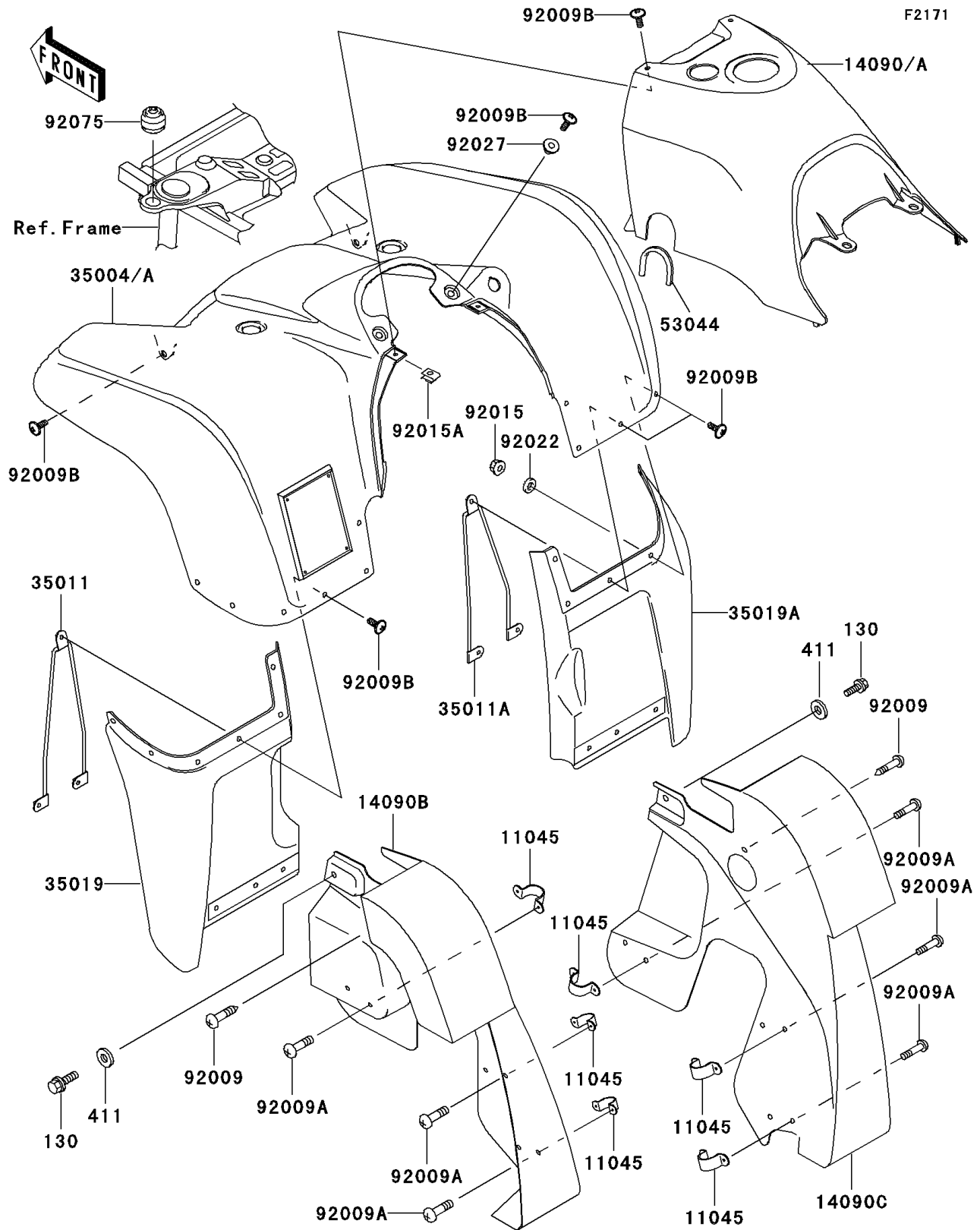


1999 Prairie® 300 4x4 PARTS DIAGRAM

Front Fender(s)



1999 Prairie® 300 4x4 PARTS LIST

Front Fender(s)

ITEM NAME	PART NUMBER	QUANTITY
BOLT-FLANGED,8X14 (Ref # 130)	130C0814	1
WASHER-PLAIN,8MM,BLACK (Ref # 411)	411F0800	1
BRACKET,FENDER (Ref # 11045)	11045-1882	1
COVER,FUEL TANK,H.GREEN (Ref # 14090)	14090-1666-6A	1
COVER,FUEL TANK,F.RED (Ref # 14090A)	14090-1666-6L	1
COVER,FRONT INNER FLAP,LH (Ref # 14090B)	14090-1933	1
COVER,FRONT INNER FLAP,RH (Ref # 14090C)	14090-1934	1
FENDER-FRONT,H.GREEN (Ref # 35004)	35004-1378-6A	1
FENDER-FRONT,F.RED (Ref # 35004A)	35004-1378-6L	1
STAY,FRONT FLAP,LH (Ref # 35011)	35011-1761	1
STAY,FRONT FLAP,RH (Ref # 35011A)	35011-1784	1
FLAP,FR,LH,F.BLACK (Ref # 35019)	35019-7501-6Z	1
FLAP,FR,RH,F.BLACK (Ref # 35019A)	35019-7502-6Z	1
TRIM,L=150 (Ref # 53044)	53044-1303	1
SCREW,TAPPING,6X16 (Ref # 92009)	92009-1166	1
SCREW,TAPPING,5X10 (Ref # 92009A)	92009-1332	1
SCREW,6X16 (Ref # 92009B)	92009-1621	1
NUT,LOCK,FLANGED,6MM (Ref # 92015)	92015-1675	1
NUT,CLAMP,6MM (Ref # 92015A)	92015-1678	1
WASHER,6.5X16X1.0 (Ref # 92022)	92022-1093	1
COLLAR,L=4.7 (Ref # 92027)	92027-1964	1
DAMPER (Ref # 92075)	92075-1744	1