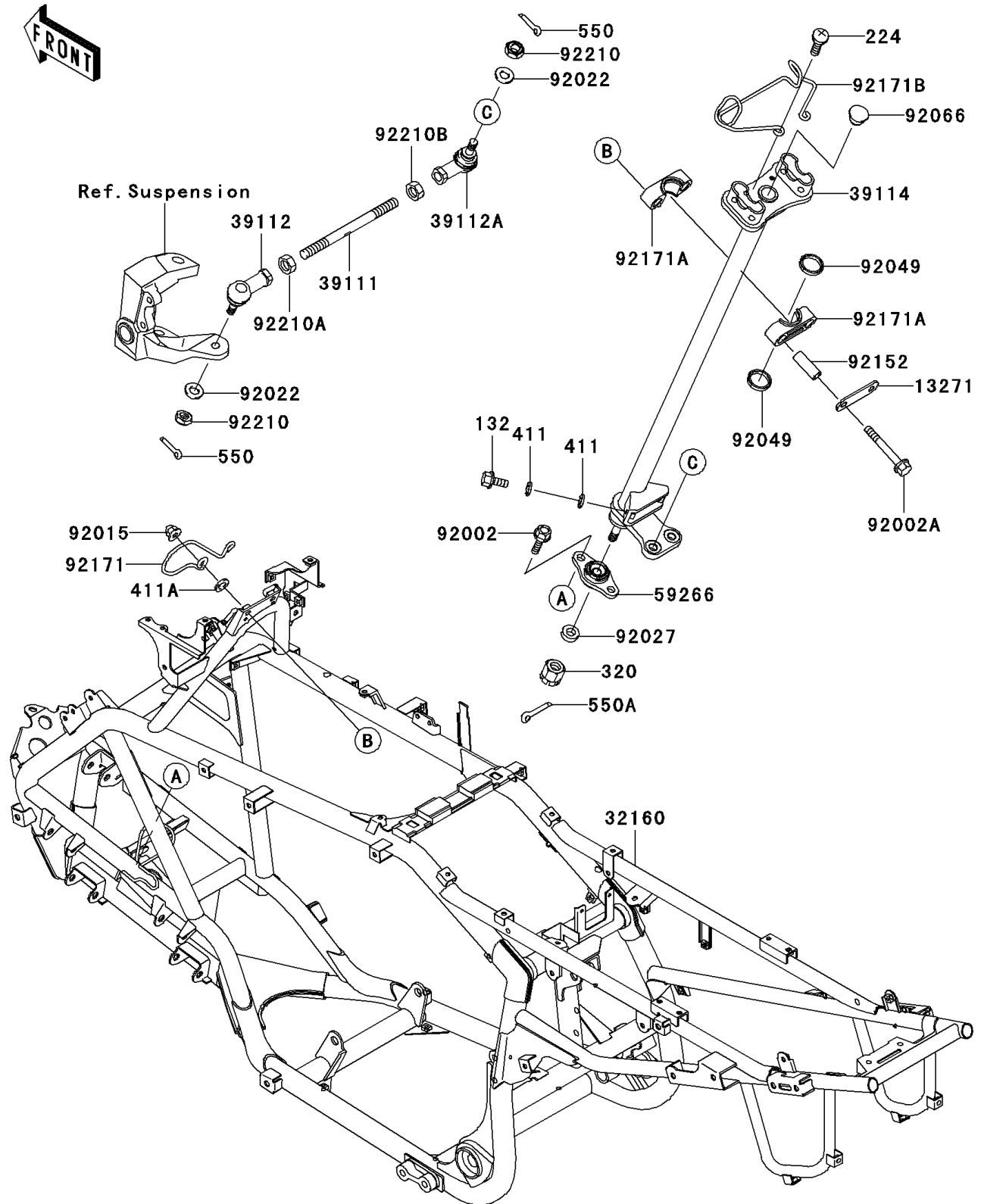


## 2006 KFX®700 PARTS DIAGRAM

Frame

F2120



## 2006 KFX®700 PARTS LIST

Frame

| ITEM NAME                             | PART NUMBER   | QUANTITY |
|---------------------------------------|---------------|----------|
| BOLT-FLANGED-SMALL,6X16 (Ref # 132)   | 132J0616      | 1        |
| SCREW-PAN-WP-CROS,6X14 (Ref # 224)    | 224C0614      | 1        |
| NUT-CASTLE (Ref # 320)                | 320H1000      | 1        |
| WASHER-PLAIN,6MM (Ref # 411)          | 411B0600      | 1        |
| WASHER-PLAIN,8MM,BLACK (Ref # 411A)   | 411F0800      | 1        |
| PIN-COTTER,2.0X15 (Ref # 550)         | 550D2015      | 1        |
| PIN-COTTER,2.5X18 (Ref # 550A)        | 550D2518      | 1        |
| PLATE (Ref # 13271)                   | 13271-1887    | 1        |
| FRAME-COMP,G.GRAY (Ref # 32160)       | 32160-0028-HN | 1        |
| ROD-TIE (Ref # 39111)                 | 39111-0010    | 1        |
| RODEND-TIE,RIGHT HANDED (Ref # 39112) | 39112-1087    | 1        |
| RODEND-TIE,LEFT HANDED (Ref # 39112A) | 39112-1088    | 1        |
| SHAFT-COMP-STRG (Ref # 39114)         | 39114-0001    | 1        |
| JOINT-BALL (Ref # 59266)              | 59266-0001    | 1        |
| BOLT,8X20 (Ref # 92002)               | 92002-1250    | 1        |
| BOLT,FLANGED,8X70 (Ref # 92002A)      | 92002-1349    | 1        |
| NUT,CAP,8MM,BLACK (Ref # 92015)       | 92015-1174    | 1        |
| WASHER,10.2X20X1.5 (Ref # 92022)      | 92022-3742    | 1        |
| COLLAR,10X21.3X7 (Ref # 92027)        | 92027-1817    | 1        |
| SEAL-OIL,SR25.4X31X3.8 (Ref # 92049)  | 92049-1611    | 1        |
| PLUG (Ref # 92066)                    | 92066-1220    | 1        |
| COLLAR,9.1X13.9X39.2 (Ref # 92152)    | 92152-1456    | 1        |
| CLAMP,CABLE (Ref # 92171)             | 92171-0066    | 1        |
| CLAMP,STEERING SHAFT (Ref # 92171A)   | 92171-1542    | 1        |
| CLAMP,CABLE&HARNESS (Ref # 92171B)    | 92171-1543    | 1        |
| NUT,LOCK,10MM (Ref # 92210)           | 92210-1184    | 1        |
| NUT,RIGHT HANDED (Ref # 92210A)       | 92210-1385    | 1        |
| NUT,LEFT HANDED (Ref # 92210B)        | 92210-1386    | 1        |