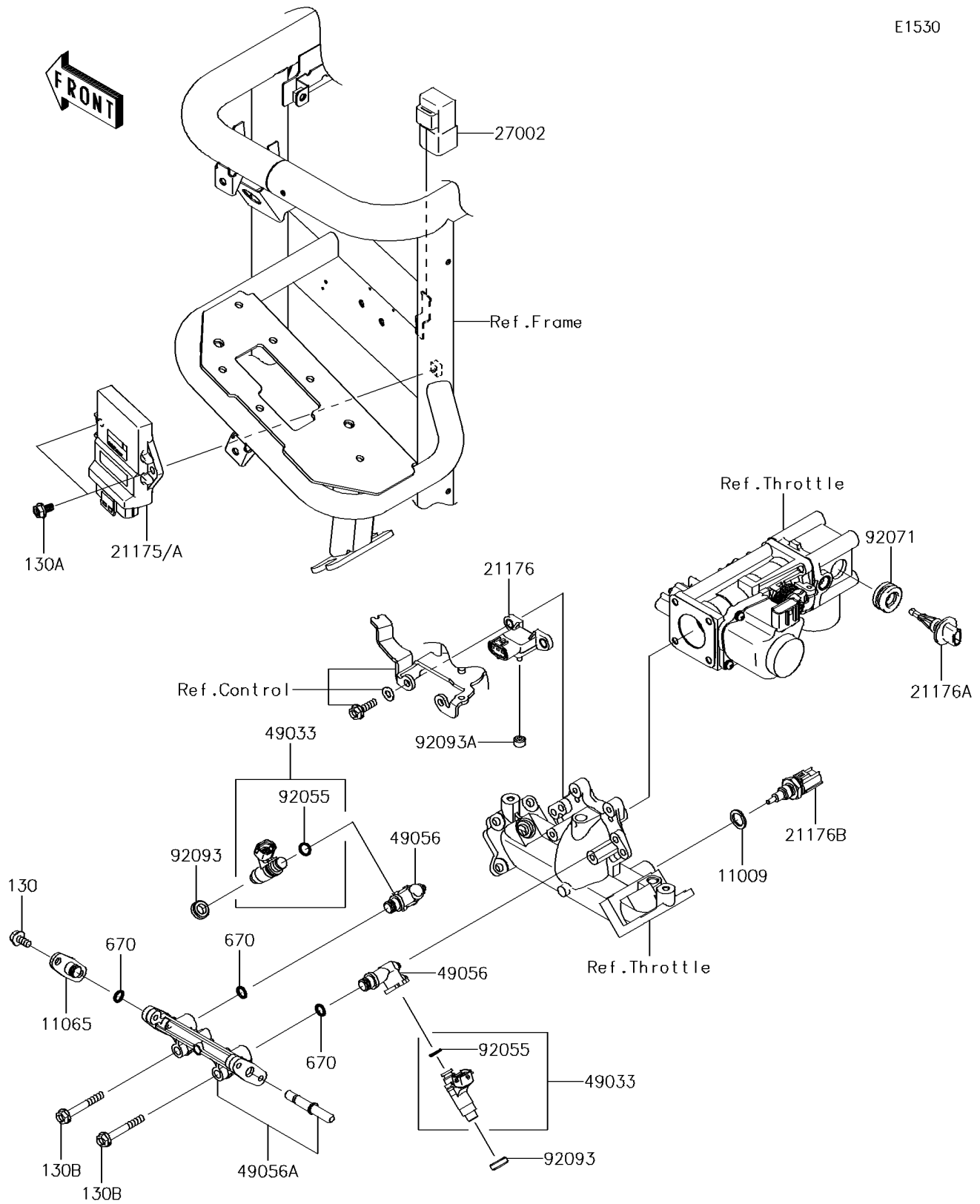


2016 MULE™ 4010 Trans 4x4® SE PARTS DIAGRAM

Fuel Injection

E1530



2016 MULE™ 4010 Trans 4x4® SE PARTS LIST

Fuel Injection

| ITEM NAME | PART NUMBER | QUANTITY |
|---------------------------------------|-------------|----------|
| GASKET,12.5X18X1.5 (Ref # 11009) | 11009-1376 | 1 |
| CAP (Ref # 11065) | 11065-2129 | 1 |
| BOLT-FLANGED,6X12 (Ref # 130) | 130BA0612 | 1 |
| BOLT-FLANGED,6X16 (Ref # 130A) | 130BB0616 | 1 |
| BOLT-FLANGED,6X45 (Ref # 130B) | 130CA0645 | 1 |
| CONTROL UNIT-ELECTRONIC (Ref # 21175) | 21175-0332 | 1 |
| SENSOR,PRESSURE (Ref # 21176) | 21176-1095 | 1 |
| SENSOR,AIR TEMP (Ref # 21176A) | 21176-2106 | 1 |
| SENSOR (Ref # 21176B) | 21176-2111 | 1 |
| RELAY-ASSY (Ref # 27002) | 27002-1088 | 1 |
| NOZZLE-INJECTION (Ref # 49033) | 49033-2060 | 1 |
| PIPE-INJECTION (Ref # 49056) | 49056-2062 | 1 |
| PIPE-INJECTION (Ref # 49056A) | 49056-6003 | 1 |
| O RING,8MM (Ref # 670) | 670E1508 | 1 |
| RING-O,INJECTION NOZZLE (Ref # 92055) | 92055-1622 | 1 |
| GROMMET (Ref # 92071) | 92071-2140 | 1 |
| SEAL (Ref # 92093) | 92093-2119 | 1 |
| SEAL (Ref # 92093A) | 92093-2127 | 1 |