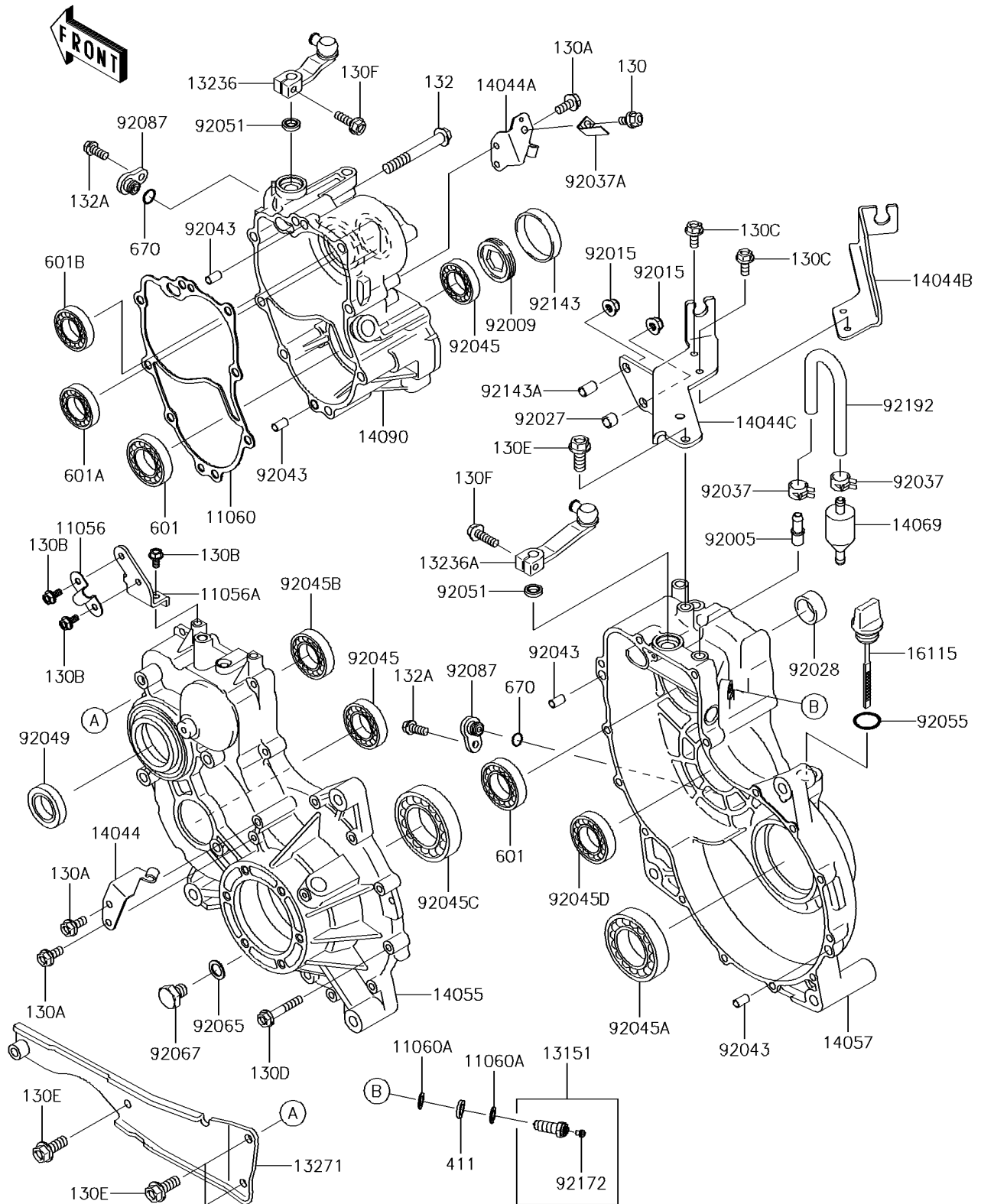


## 2016 MULE™ 4010 Trans 4x4® SE PARTS DIAGRAM

Gear Box

E1450



## 2016 MULE™ 4010 Trans 4x4® SE PARTS LIST

Gear Box

| ITEM NAME                            | PART NUMBER | QUANTITY |
|--------------------------------------|-------------|----------|
| BRACKET,OIL PIPE (Ref # 11056)       | 11056-4139  | 1        |
| BRACKET,OIL PIPE (Ref # 11056A)      | 11056-4140  | 1        |
| GASKET,GEAR CASE COVER (Ref # 11060) | 11060-1310  | 1        |
| GASKET (Ref # 11060A)                | 11060-1966  | 1        |
| SWITCH-COMP (Ref # 13151)            | 13151-1093  | 1        |
| LEVER-COMP (Ref # 13236)             | 13236-1363  | 1        |
| LEVER-COMP (Ref # 13236A)            | 13236-1372  | 1        |
| PLATE (Ref # 13271)                  | 13271-1604  | 1        |
| HOLDER-CABLE (Ref # 14044)           | 14044-0003  | 1        |
| HOLDER-CABLE (Ref # 14044A)          | 14044-0004  | 1        |
| HOLDER-CABLE,HI/LOW (Ref # 14044B)   | 14044-1075  | 1        |
| HOLDER-CABLE (Ref # 14044C)          | 14044-1098  | 1        |
| CASE-GEAR,LH (Ref # 14055)           | 14055-0035  | 1        |
| CASE-COMP-GEAR,RH (Ref # 14057)      | 14057-0011  | 1        |
| BREATHER (Ref # 14069)               | 14069-1051  | 1        |
| COVER,GEAR CASE,HI/LOW (Ref # 14090) | 14090-1238  | 1        |
| CAP-OIL FILLER (Ref # 16115)         | 16115-1060  | 1        |
| FITTING,BREATHER (Ref # 92005)       | 92005-1127  | 1        |
| SCREW,55MM (Ref # 92009)             | 92009-1290  | 1        |
| NUT,8MM (Ref # 92015)                | 92015-1432  | 1        |
| COLLAR,8.8X12X9 (Ref # 92027)        | 92027-1568  | 1        |
| BUSHING,23X30X13 (Ref # 92028)       | 92028-132   | 1        |
| CLAMP,TUBE (Ref # 92037)             | 92037-1505  | 1        |
| CLAMP (Ref # 92037A)                 | 92037-1680  | 1        |
| PIN,6.2X8X14 (Ref # 92043)           | 92043-1263  | 1        |
| BEARING-BALL,TMB304CCM (Ref # 92045) | 92045-1142  | 1        |
| BEARING-BALL,6010CM (Ref # 92045A)   | 92045-1162  | 1        |
| BEARING-BALL,62/28 (Ref # 92045B)    | 92045-1207  | 1        |
| BEARING-BALL,6210CM (Ref # 92045C)   | 92045-1213  | 1        |

## 2016 MULE™ 4010 Trans 4x4® SE PARTS LIST

Gear Box

| ITEM NAME                             | PART NUMBER | QUANTITY |
|---------------------------------------|-------------|----------|
| BEARING-BALL,TMB205JR2 (Ref # 92045D) | 92045-1285  | 1        |
| SEAL-OIL,TC28X47X7 (Ref # 92049)      | 92049-1297  | 1        |
| SEAL-OIL,TB13225.5 (Ref # 92051)      | 92051-005   | 1        |
| RING-O,20X3 (Ref # 92055)             | 92055-2185  | 1        |
| GASKET,10.5X16X1 (Ref # 92065)        | 92065-058   | 1        |
| PLUG,DRAIN,10X12 (Ref # 92067)        | 92067-001   | 1        |
| BUSHING-METER GEAR (Ref # 92087)      | 92087-1058  | 1        |
| COLLAR,66X70X11 (Ref # 92143)         | 92143-1120  | 1        |
| COLLAR,8.5X15X9 (Ref # 92143A)        | 92143-1642  | 1        |
| SCREW,4X6 (Ref # 92172)               | 92172-0717  | 1        |
| TUBE (Ref # 92192)                    | 92192-1643  | 1        |
| BOLT-FLANGED,6X10 (Ref # 130)         | 130AA0610   | 1        |
| BOLT-FLANGED,6X14 (Ref # 130A)        | 130AA0614   | 1        |
| BOLT-FLANGED,6X12 (Ref # 130B)        | 130BA0612   | 1        |
| BOLT-FLANGED,6X14 (Ref # 130C)        | 130BA0614   | 1        |
| BOLT-FLANGED,6X35 (Ref # 130D)        | 130BA0635   | 1        |
| BOLT-FLANGED,8X20 (Ref # 130E)        | 130BA0820   | 1        |
| BOLT-FLANGED,6X20 (Ref # 130F)        | 130CA0620   | 1        |
| BOLT-FLANGED-SMALL,8X60 (Ref # 132)   | 132BA0860   | 1        |
| BOLT-FLANGED-SMALL,6X14 (Ref # 132A)  | 132BB0614   | 1        |
| WASHER-PLAIN,10MM (Ref # 411)         | 411AA1000   | 1        |
| BEARING-BALL,#6007C3 (Ref # 601)      | 601B6007    | 1        |
| BEARING-BALL,#6303C3 (Ref # 601A)     | 601B6303    | 1        |
| BEARING-BALL (Ref # 601B)             | 601B6303U   | 1        |
| O RING,10MM (Ref # 670)               | 670D1510    | 1        |