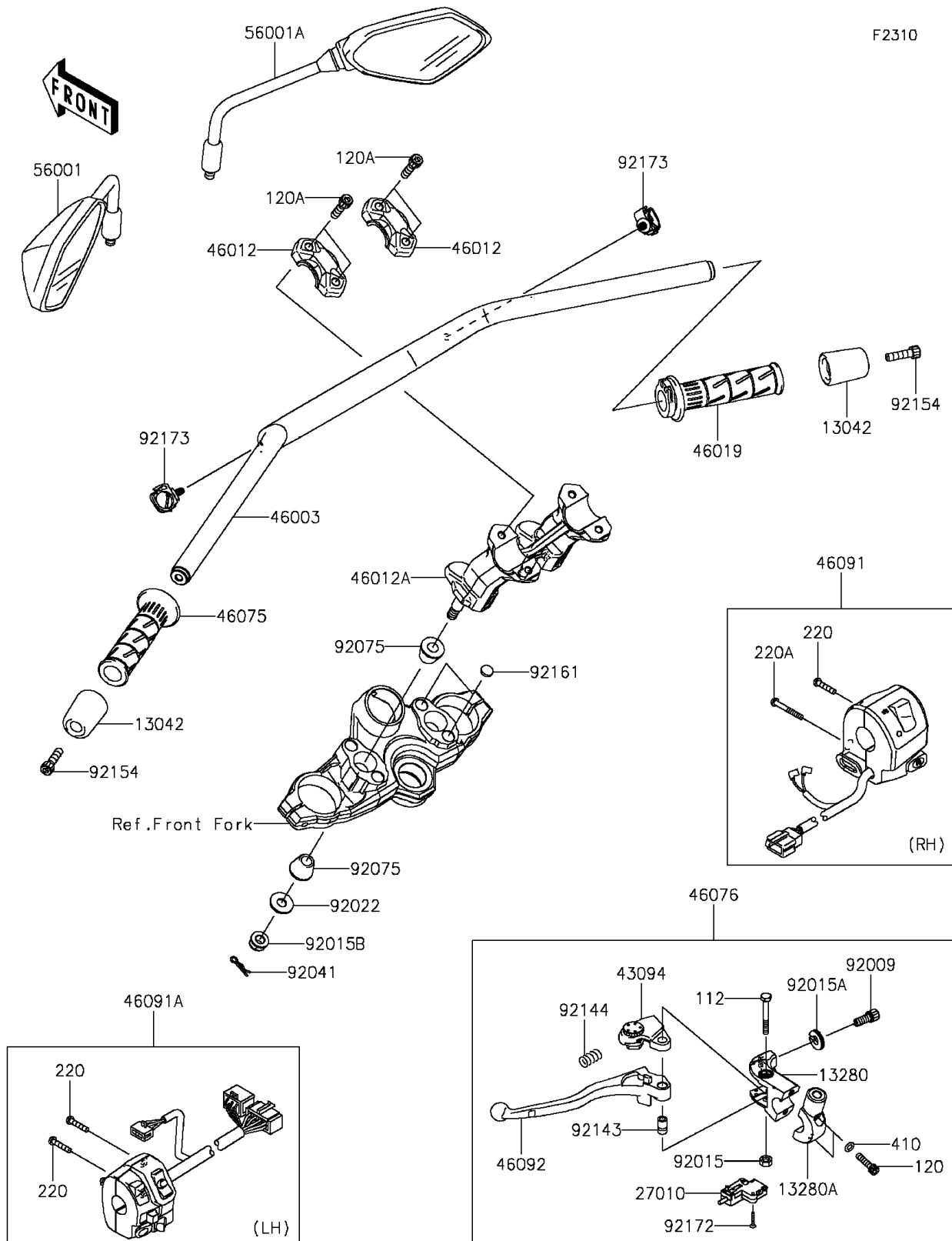


2015 VERSYS® 1000 ABS PARTS DIAGRAM

Handlebar



2015 VERSYS® 1000 ABS PARTS LIST

Handlebar

| ITEM NAME | PART NUMBER | QUANTITY |
|--|----------------|----------|
| BOLT-UPSET,6X45 (Ref # 112) | 112AB0645 | 1 |
| BOLT-SOCKET,6X25 (Ref # 120) | 120CB0625 | 1 |
| BOLT-SOCKET,8X30 (Ref # 120A) | 120CC0830 | 1 |
| WEIGHT,HANDLE (Ref # 13042) | 13042-5007 | 1 |
| HOLDER,CLUTCH LEVER (Ref # 13280) | 13280-0306 | 1 |
| HOLDER,CLUTCH LEVER (Ref # 13280A) | 13280-0307 | 1 |
| SCREW-PAN-CROS,5X25 (Ref # 220) | 220AB0525 | 1 |
| SCREW-PAN-CROS,5X40 (Ref # 220A) | 220AB0540 | 1 |
| SWITCH,CLUTCH,BLACK (Ref # 27010) | 27010-1094 | 1 |
| WASHER-PLAIN-SMALL,6MM (Ref # 410) | 410AB0600 | 1 |
| ADJUSTER,CLUTCH LEVER (Ref # 43094) | 43094-1053 | 1 |
| HANDLE,F.S.BLACK (Ref # 46003) | 46003-0627-18R | 1 |
| HOLDER-HANDLE,UPP,F.S.BLACK (Ref # 46012) | 46012-0353-18R | 1 |
| HOLDER-HANDLE,LWR,F.S.BLACK (Ref # 46012A) | 46012-0354-18R | 1 |
| GRIP-ASSY,THROTTLE (Ref # 46019) | 46019-0060 | 1 |
| GRIP,HANDLE,LH (Ref # 46075) | 46075-0564 | 1 |
| LEVER-ASSY-GRIP,CLUTCH (Ref # 46076) | 46076-0052 | 1 |
| HOUSING-ASSY-CONTROL,RH (Ref # 46091) | 46091-0252 | 1 |
| HOUSING-ASSY-CONTROL,LH (Ref # 46091A) | 46091-0253 | 1 |
| LEVER-GRIP,CLUTCH (Ref # 46092) | 46092-0031 | 1 |
| MIRROR-ASSY,LH (Ref # 56001) | 56001-0297 | 1 |
| MIRROR-ASSY,RH (Ref # 56001A) | 56001-0298 | 1 |
| SCREW,CABLE ADJUST,8MM,BLACK (Ref # 92009) | 92009-1134 | 1 |
| NUT,LOCK,6MM,BLACK (Ref # 92015) | 92015-1191 | 1 |
| NUT,CABLE ADJUST LOCK,8MM,BLK (Ref # 92015A) | 92015-1197 | 1 |
| NUT,LOCK,FLANGED,10MM (Ref # 92015B) | 92015-1717 | 1 |
| WASHER,10.5X26X2.3,BLACK (Ref # 92022) | 92022-1396 | 1 |
| COTTER,8MM (Ref # 92041) | 92041-1060 | 1 |
| DAMPER,HANDLE HOLDER (Ref # 92075) | 92075-039 | 1 |

2015 VERSYS® 1000 ABS PARTS LIST

Handlebar

| ITEM NAME | PART NUMBER | QUANTITY |
|--------------------------------|-------------|----------|
| COLLAR (Ref # 92143) | 92143-1379 | 1 |
| SPRING (Ref # 92144) | 92144-1467 | 1 |
| BOLT,SOCKET,8X30 (Ref # 92154) | 92154-0502 | 1 |
| DAMPER,13X3 (Ref # 92161) | 92161-1723 | 1 |
| SCREW,3X16 (Ref # 92172) | 92172-0183 | 1 |
| CLAMP (Ref # 92173) | 92173-0861 | 1 |