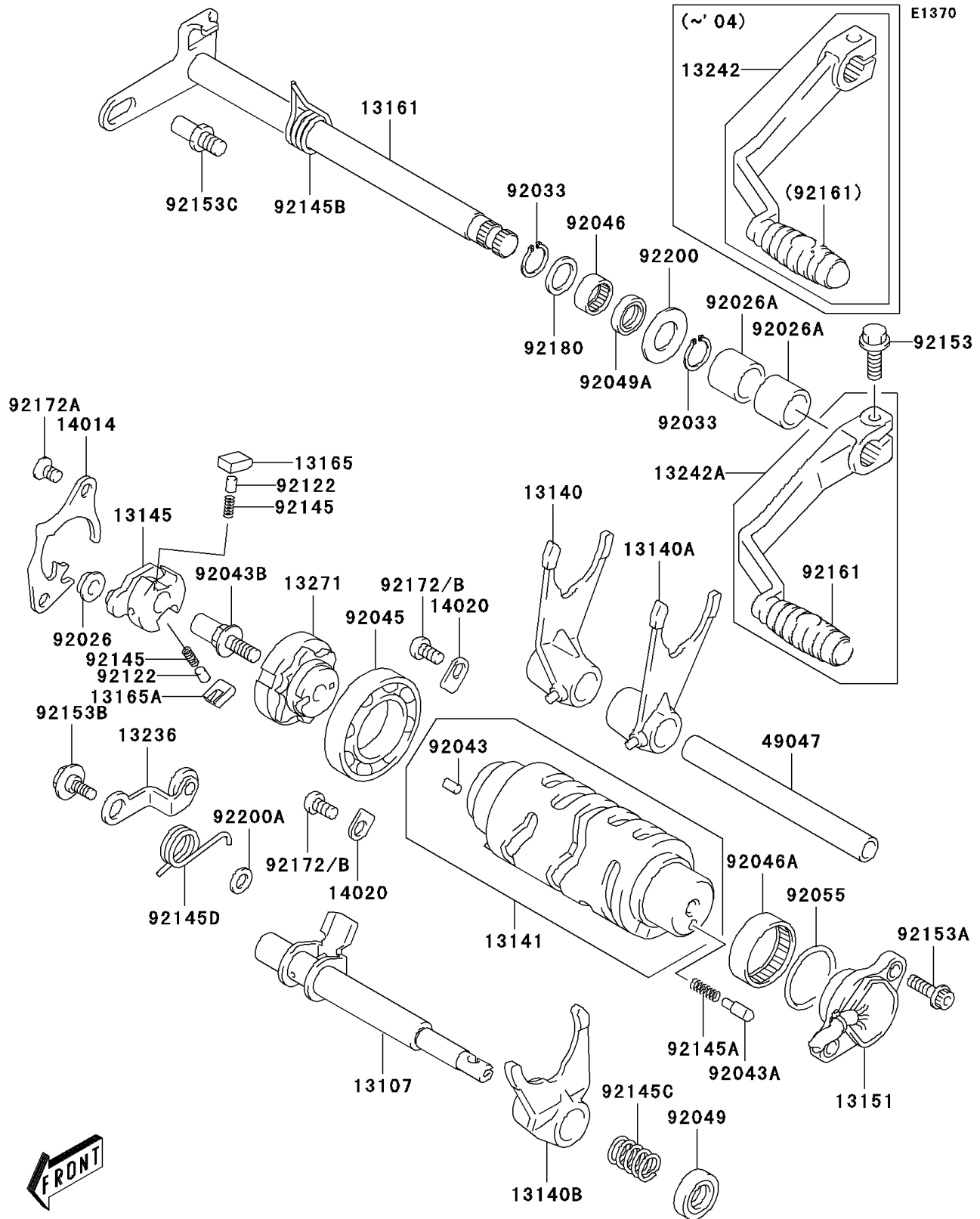


## 2003 KFX®400 PARTS DIAGRAM

Gear Change Mechanism



## 2003 KFX®400 PARTS LIST

Gear Change Mechanism

ITEM NAME	PART NUMBER	QUANTITY
SHAFT,REVERSE LOCK (Ref # 13107)	13107-S006	1
FORK-SHIFT (Ref # 13140)	13140-S008	1
FORK-SHIFT (Ref # 13140A)	13140-S009	1
FORK-SHIFT (Ref # 13140B)	13140-S010	1
DRUM-CHANGE (Ref # 13141)	13141-S005	1
CAM-CHANGE DRUM (Ref # 13145)	13145-S004	1
SWITCH-COMP (Ref # 13151)	13151-S002	1
LEVER-COMP-CHANGE SHAFT (Ref # 13161)	13161-S004	1
PAWL (Ref # 13165)	13165-S003	1
PAWL (Ref # 13165A)	13165-S004	1
LEVER-COMP,GEAR SHIFT (Ref # 13236)	13236-S005	1
LEVER-ASSY-CHANGE (Ref # 13242)	13242-S006	1
PLATE (Ref # 13271)	13271-S046	1
PLATE-POSITION (Ref # 14014)	14014-S004	1
RETAINER (Ref # 14020)	14020-S008	1
ROD-SHIFT (Ref # 49047)	49047-S004	1
SPACER,GEAR SHIFT CAM (Ref # 92026)	92026-S087	1
SPACER (Ref # 92026A)	92026-S089	1
RING-SNAP (Ref # 92033)	92033-S037	1
PIN,CAM STOPPER PLATE (Ref # 92043)	92043-S035	1
PIN,GEAR SHIFT (Ref # 92043A)	92043-S038	1
PIN,SHIFT CAM (Ref # 92043B)	92043-S041	1
BEARING-BALL,GEAR SHIFT (Ref # 92045)	92045-S047	1
BEARING-NEEDLE,14X20X12 (Ref # 92046)	92046-S008	1
BEARING-NEEDLE,GEAR SHIFT CAM (Ref # 92046A)	92046-S020	1
SEAL-OIL,REVERSE LOCK SHAFT (Ref # 92049)	92049-S049	1
SEAL-OIL,GEAR SHIFT (Ref # 92049A)	92049-S050	1
RING-O,26.2X2.4 (Ref # 92055)	92055-S055	1
ROLLER,5X8 (Ref # 92122)	92122-S005	1

## 2003 KFX®400 PARTS LIST

Gear Change Mechanism

ITEM NAME	PART NUMBER	QUANTITY
SPRING (Ref # 92145)	92145-S037	1
SPRING (Ref # 92145A)	92145-S089	1
SPRING (Ref # 92145B)	92145-S094	1
SPRING,REVERSE LOCK (Ref # 92145C)	92145-S101	1
SPRING (Ref # 92145D)	92145-S102	1
BOLT (Ref # 92153)	92153-S013	1
BOLT (Ref # 92153A)	92153-S252	1
BOLT,6X14.3 (Ref # 92153B)	92153-S285	1
BOLT (Ref # 92153C)	92153-S292	1
DAMPER,PEDAL (Ref # 92161)	92161-S093	1
SCREW (Ref # 92172A)	92172-S112	1
SCREW (Ref # 92172B)	92172-S170	1
SHIM,GEAR SHIFT (Ref # 92180)	92180-S045	1
WASHER,14X29X1.50 (Ref # 92200)	92200-S086	1
WASHER (Ref # 92200A)	92200-S127	1