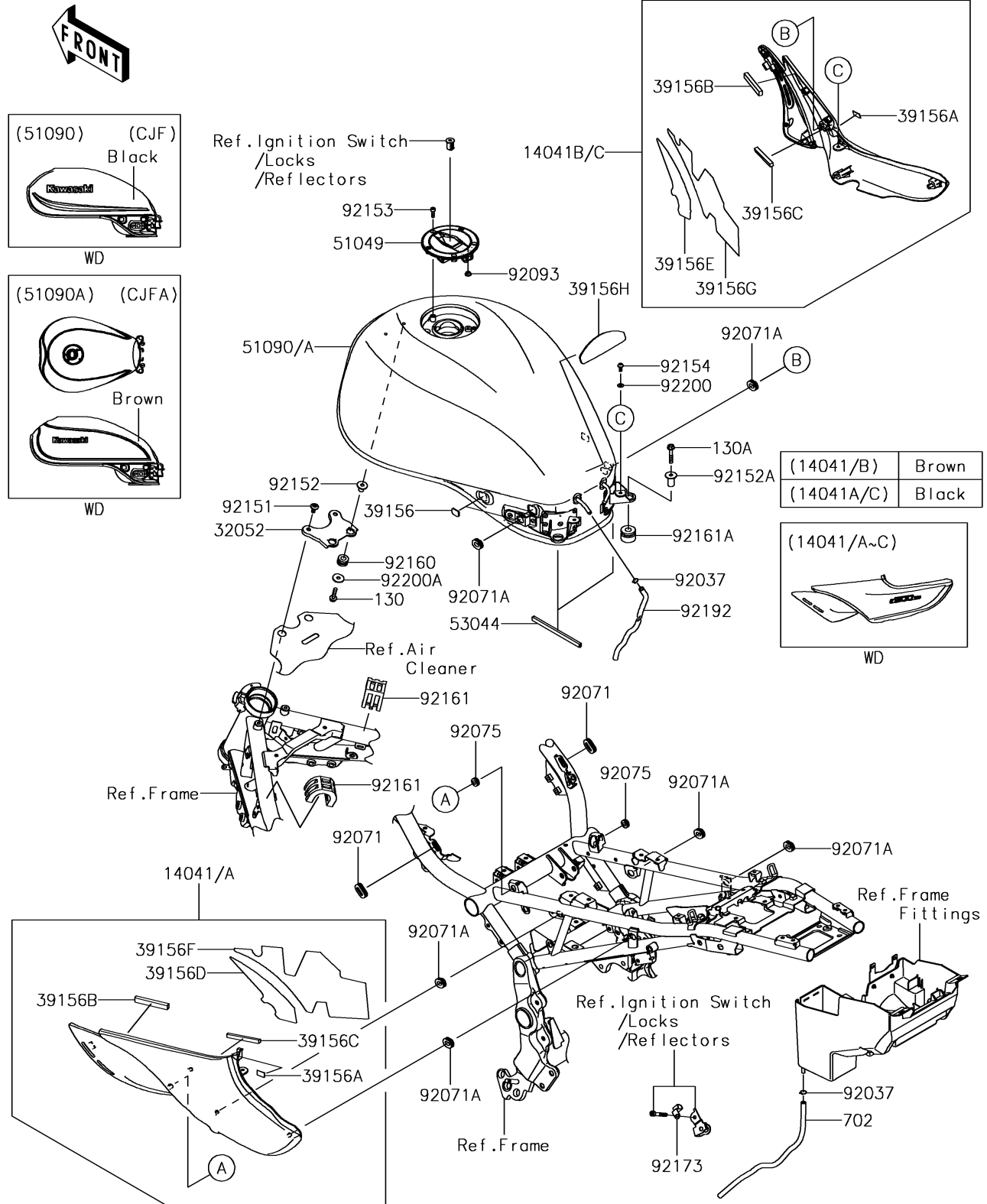


2018 Z900 RS PARTS DIAGRAM

Fuel Tank(CA)

F2410A



2018 Z900 RS PARTS LIST

Fuel Tank(CA)

| ITEM NAME | PART NUMBER | QUANTITY |
|--|----------------|----------|
| COVER-COMP,LH,M.S.BLACK (Ref # 14041A) | 14041-5094-660 | 1 |
| COVER-COMP,RH,M.S.BLACK (Ref # 14041C) | 14041-5095-660 | 1 |
| BRACKET-TANK (Ref # 32052) | 32052-0792 | 1 |
| PAD,13X18X2 (Ref # 39156) | 39156-2204 | 1 |
| PAD,10X20X1 (Ref # 39156A) | 39156-2241 | 1 |
| PAD,7X70X10 (Ref # 39156B) | 39156-2268 | 1 |
| PAD,7X70X7 (Ref # 39156C) | 39156-2269 | 1 |
| PAD,72X188X0.3,COVER LH (Ref # 39156D) | 39156-2273 | 1 |
| PAD,72X188X0.3,COVER RH (Ref # 39156E) | 39156-2274 | 1 |
| PAD,137X328X0.45,COVER LH (Ref # 39156F) | 39156-2275 | 1 |
| PAD,137X328X0.45,COVER RH (Ref # 39156G) | 39156-2276 | 1 |
| PAD,35X120X3 (Ref # 39156H) | 39156-2346 | 1 |
| CAP-TANK (Ref # 51049) | 51049-0721 | 1 |
| TANK-COMP-FUEL,M.S.BLACK (Ref # 51090) | 51090-5154-660 | 1 |
| TRIM (Ref # 53044) | 53044-0568 | 1 |
| CLAMP,TUBE (Ref # 92037) | 92037-010 | 1 |
| GROMMET,EMBOSSSED 0776 (Ref # 92071) | 92071-0776 | 1 |
| BOLT-FLANGED,6X25 (Ref # 130) | 130BA0625 | 1 |
| BOLT-FLANGED,6X35 (Ref # 130A) | 130BA0635 | 1 |
| TUBE-RUBBER,6X9X360 (Ref # 702) | 702A06360 | 1 |
| GROMMET,EMBOSSSED 0777 (Ref # 92071A) | 92071-0777 | 1 |
| DAMPER (Ref # 92075) | 92075-161 | 1 |
| SEAL,FUEL TANK CAP (Ref # 92093) | 92093-1030 | 1 |
| BOLT,SOCKET,6X14 (Ref # 92151) | 92151-1654 | 1 |
| COLLAR,6.3X9.5X14.1 (Ref # 92152) | 92152-1847 | 1 |
| COLLAR6.3X22X23.6 (Ref # 92152A) | 92152-2427 | 1 |
| BOLT,SOCKET,5X16 (Ref # 92153) | 92153-1616 | 1 |
| BOLT,SOCKET,5X12 (Ref # 92154) | 92154-1421 | 1 |
| DAMPER,10X20X12 (Ref # 92160) | 92160-1167 | 1 |

2018 Z900 RS PARTS LIST

Fuel Tank(CA)

| ITEM NAME | PART NUMBER | QUANTITY |
|--|-------------|----------|
| DAMPER (Ref # 92161) | 92161-1963 | 1 |
| DAMPER,12X28X21 (Ref # 92161A) | 92161-1998 | 1 |
| CLAMP (Ref # 92173) | 92173-1820 | 1 |
| TUBE,6X9X708 (Ref # 92192) | 92192-1845 | 1 |
| WASHER,NYLONE,5.3X11.5X0.5 (Ref # 92200) | 92200-0006 | 1 |
| WASHER,6.5X22X1.6 (Ref # 92200A) | 92200-1087 | 1 |