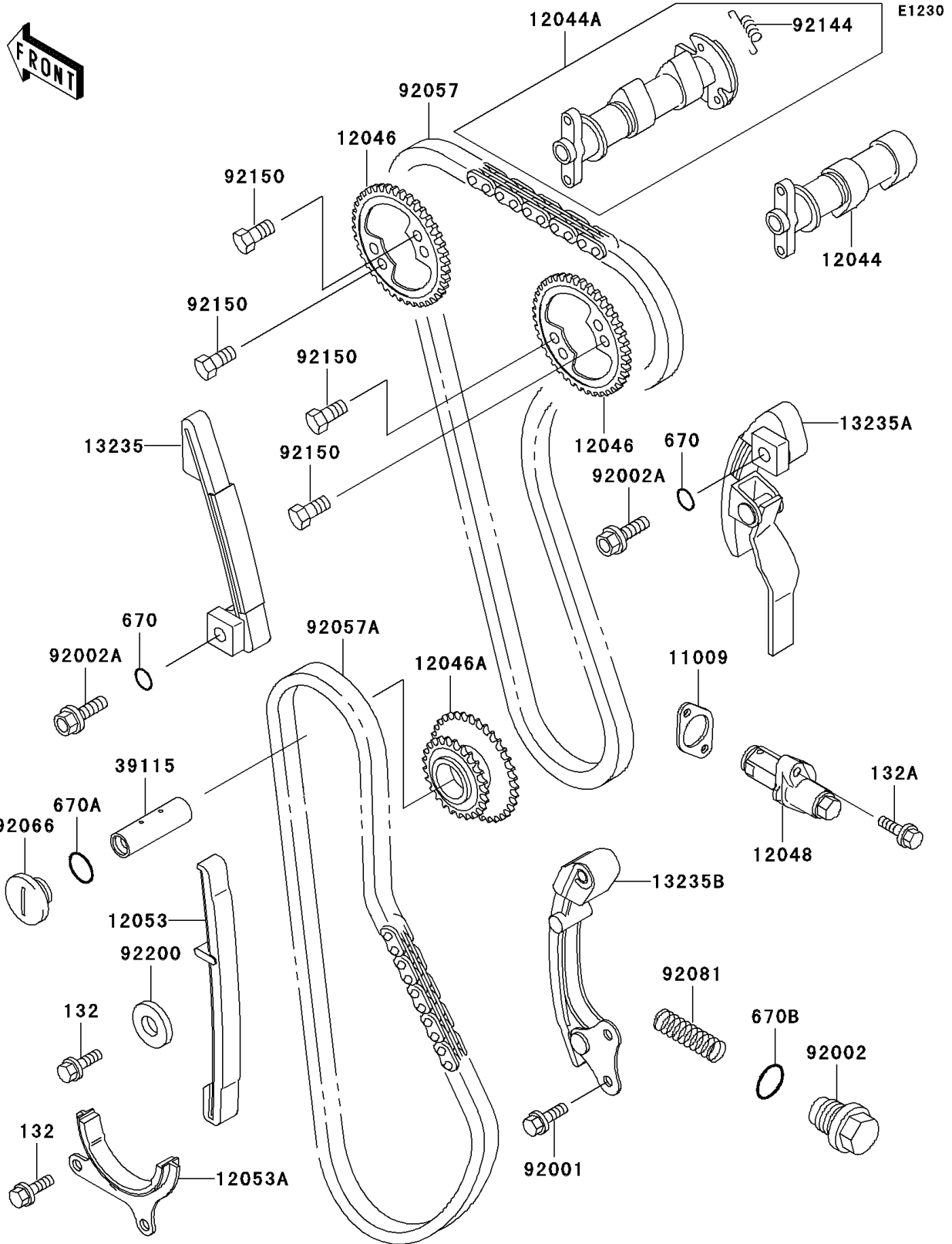


## 1993 KLX™650 PARTS DIAGRAM

Camshaft(s)/Tensioner



## 1993 KLX™650 PARTS LIST

Camshaft(s)/Tensioner

ITEM NAME	PART NUMBER	QUANTITY
BOLT-FLANGED-SMALL (Ref # 132)	132G0614	1
BOLT-FLANGED-SMALL (Ref # 132A)	132Y0625	1
O RING,11MM (Ref # 670)	670B2011	1
O RING,16MM (Ref # 670A)	670B2016	1
O RING,18MM (Ref # 670B)	670B2018	1
GASKET,TENSIONER (Ref # 11009)	11009-1858	1
CAMSHAFT-VALVE,INTAKE (Ref # 12044)	12044-1305	1
CAMSHAFT-VALVE,EXHAUST (Ref # 12044A)	12044-1347	1
SPROCKET,CAMSHAFT (Ref # 12046)	12046-1137	1
SPROCKET,CAMCHAIN IDLER (Ref # 12046A)	12046-1139	1
TENSIONER-ASSY (Ref # 12048)	12048-1139	1
GUIDE-CHAIN,FR,LWR (Ref # 12053)	12053-1306	1
GUIDE-CHAIN (Ref # 12053A)	12053-1329	1
GUIDE-COMP,FR,UPP (Ref # 13235)	13235-1064	1
GUIDE-COMP,RR,UPP (Ref # 13235A)	13235-1065	1
GUIDE-COMP,RR,LWR (Ref # 13235B)	13235-1066	1
SHAFT-IDLER,SPROCKET (Ref # 39115)	39115-1074	1
BOLT,6X16 (Ref # 92001)	92001-1457	1
BOLT,TENSIONER (Ref # 92002)	92002-1621	1
BOLT (Ref # 92002A)	92002-1732	1
CHAIN,UPP,88RH2015,94L (Ref # 92057)	92057-1361	1
CHAIN,LWR,88RH2010,82L (Ref # 92057A)	92057-1362	1
PLUG,IDLER (Ref # 92066)	92066-1409	1
SPRING,TENSIONER (Ref # 92081)	92081-1380	1
SPRING,DECOMPRESSOR (Ref # 92144)	92144-1744	1
BOLT,FLANGED,6X11 (Ref # 92150)	92150-1725	1
WASHER,7X27X1.6 (Ref # 92200)	92200-1169	1