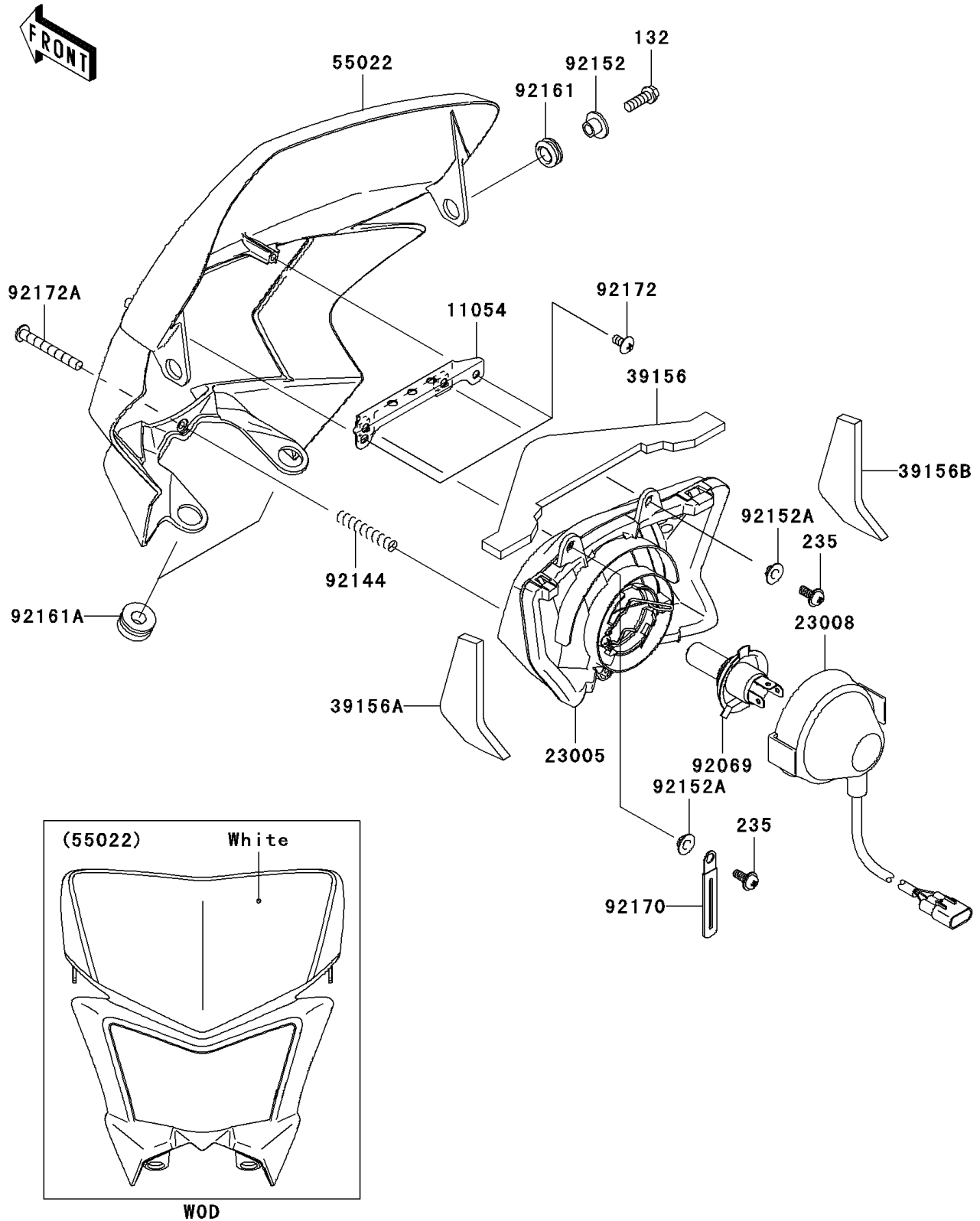


## 2010 PARTS DIAGRAM

Headlight(s)(-JKALXGA1\_AAD13364)

F2710



## 2010 PARTS LIST

Headlight(s)(-JKALXGA1\_AAO13364)

| ITEM NAME                             | PART NUMBER    | QUANTITY |
|---------------------------------------|----------------|----------|
| BOLT-FLANGED-SMALL,6X18 (Ref # 132)   | 132BC0618      | 1        |
| SCREW-PAN-WP-CROS,5X12 (Ref # 235)    | 235AA0512      | 1        |
| BRACKET,HEAD LAMP (Ref # 11054)       | 11054-1069     | 1        |
| BODY-COMP-HEAD LAMP (Ref # 23005)     | 23005-0020     | 1        |
| SOCKET-ASSY,HEAD LAMP (Ref # 23008)   | 23008-0064     | 1        |
| PAD,HEAD LAMP,TOP (Ref # 39156)       | 39156-0267     | 1        |
| PAD,HEAD LAMP,LH (Ref # 39156A)       | 39156-0268     | 1        |
| PAD,HEAD LAMP,RH (Ref # 39156B)       | 39156-0269     | 1        |
| COVER-HEAD LAMP,B.WHITE (Ref # 55022) | 55022-0038-266 | 1        |
| BULB,12V 35/35W (Ref # 92069)         | 92069-1120     | 1        |
| SPRING (Ref # 92144)                  | 92144-2266     | 1        |
| COLLAR (Ref # 92152)                  | 92152-0295     | 1        |
| COLLAR (Ref # 92152A)                 | 92152-0573     | 1        |
| DAMPER (Ref # 92161)                  | 92161-0266     | 1        |
| DAMPER (Ref # 92161A)                 | 92161-0537     | 1        |
| CLAMP (Ref # 92170)                   | 92170-1514     | 1        |
| SCREW,TAPPING,5X10 (Ref # 92172)      | 92172-0262     | 1        |
| SCREW,TAPPING,4X40 (Ref # 92172A)     | 92172-0311     | 1        |