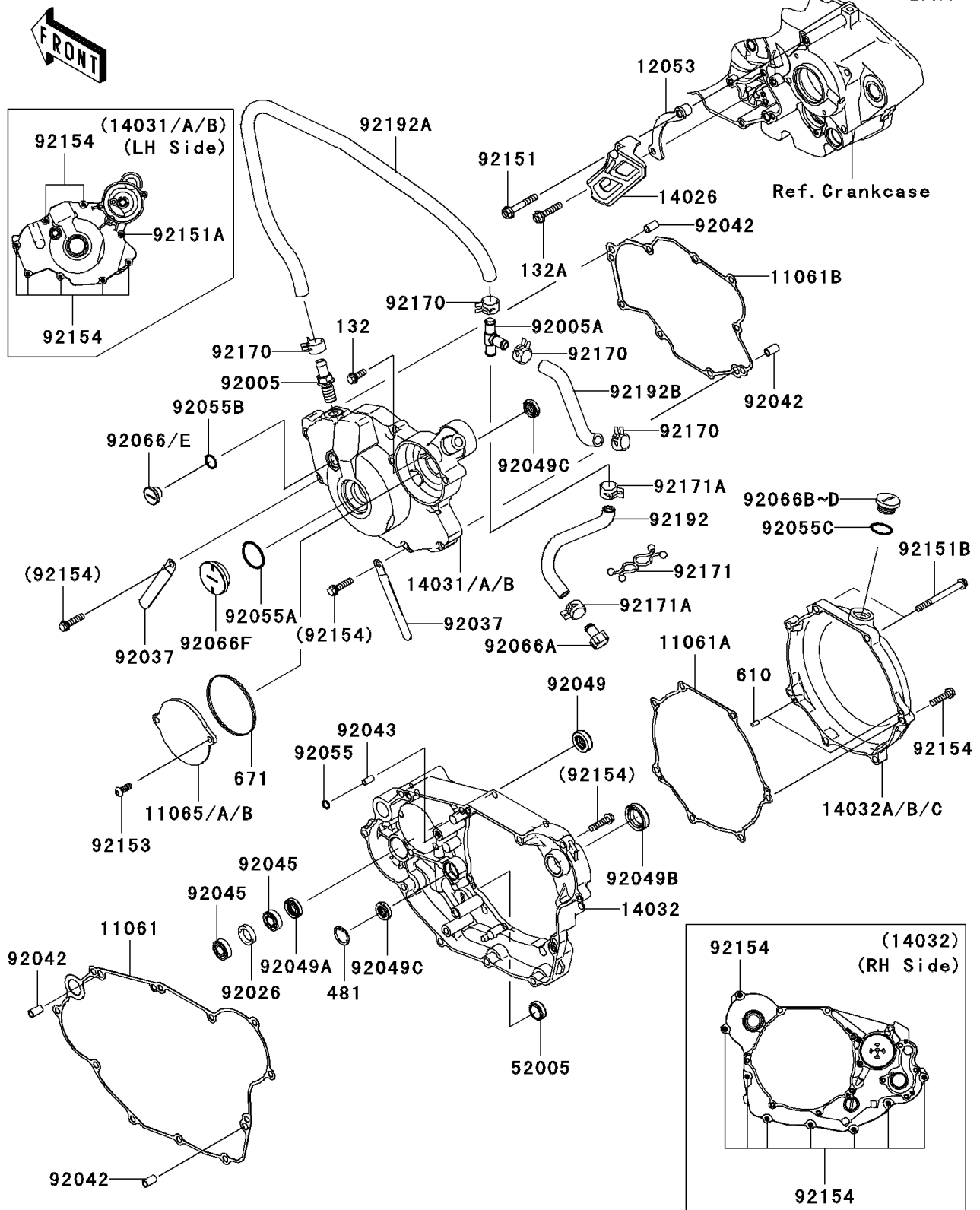


2010 PARTS DIAGRAM

Engine Cover(s)

E1431



2010 PARTS LIST

Engine Cover(s)

ITEM NAME	PART NUMBER	QUANTITY
GASKET,CLUTCH COVER,INNER (Ref # 11061)	11061-0224	1
GASKET,CLUTCH OUTER COVER (Ref # 11061A)	11061-0259	1
GASKET,GENERATOR COVER (Ref # 11061B)	11061-0271	1
CAP,LIMITER (Ref # 11065B)	11065-0336	1
GUIDE-CHAIN (Ref # 12053)	12053-0098	1
COVER-CHAIN (Ref # 14026)	14026-0045	1
COVER-GENERATOR (Ref # 14031B)	14031-0123	1
COVER-CLUTCH,INNER (Ref # 14032)	14032-0062	1
COVER-CLUTCH,OUTER (Ref # 14032B)	14032-0103	1
GAUGE,OIL LEVEL (Ref # 52005)	52005-0019	1
FITTING,BREATHER (Ref # 92005)	92005-0014	1
FITTING,3WAY (Ref # 92005A)	92005-0083	1
SPACER,16X22X4.3 (Ref # 92026)	92026-0064	1
CLAMP (Ref # 92037)	92037-1993	1
PIN,DOWEL,6.3X8X14 (Ref # 92042)	92042-007	1
PIN,4.2X6X12 (Ref # 92043)	92043-1262	1
BEARING-BALL,6900C3 (Ref # 92045)	92045-0039	1
SEAL-OIL,12X24X7 (Ref # 92049)	92049-0040	1
SEAL-OIL,12X22X5 (Ref # 92049A)	92049-0041	1
SEAL-OIL,20X30X7 (Ref # 92049B)	92049-0134	1
SEAL-OIL,10X20X5 (Ref # 92049C)	92049-1542	1
RING-O (Ref # 92055)	92055-0113	1
RING-O,27.7X2.4 (Ref # 92055A)	92055-091	1
RING-O,13.0X1.9 (Ref # 92055B)	92055-1011	1
RING-O,20X2 (Ref # 92055C)	92055-1146	1
PLUG,12X9.1 (Ref # 92066)	92066-0039	1
PLUG (Ref # 92066A)	92066-0104	1
PLUG,OIL FILTER (Ref # 92066D)	92066-0149	1
PLUG (Ref # 92066F)	92066-1404	1

2010 PARTS LIST

Engine Cover(s)

ITEM NAME	PART NUMBER	QUANTITY
BOLT-FLANGED-SMALL,6X16 (Ref # 132)	132BA0616	1
BOLT-FLANGED-SMALL,6X30 (Ref # 132A)	132BC0630	1
CIRCLIP-TYPE-C,20MM (Ref # 481)	481J2000	1
ROLLER,4X8 (Ref # 610)	610A0408	1
O RING,65MM (Ref # 671)	671B2565	1
BOLT,6X40 (Ref # 92151)	92151-1131	1
BOLT,6X35 (Ref # 92151A)	92151-1135	1
BOLT,6X65 (Ref # 92151B)	92151-1199	1
BOLT,SOCKET,6X16 (Ref # 92153)	92153-1785	1
BOLT,FLANGED,6X25 (Ref # 92154)	92154-0530	1
CLAMP (Ref # 92170)	92170-1938	1
CLAMP (Ref # 92171)	92171-0476	1
CLAMP (Ref # 92171A)	92171-0515	1
TUBE,9X13X205 (Ref # 92192)	92192-0542	1
TUBE,9X14X760 (Ref # 92192A)	92192-0543	1
TUBE,FIT.-A/C (Ref # 92192B)	92192-0544	1