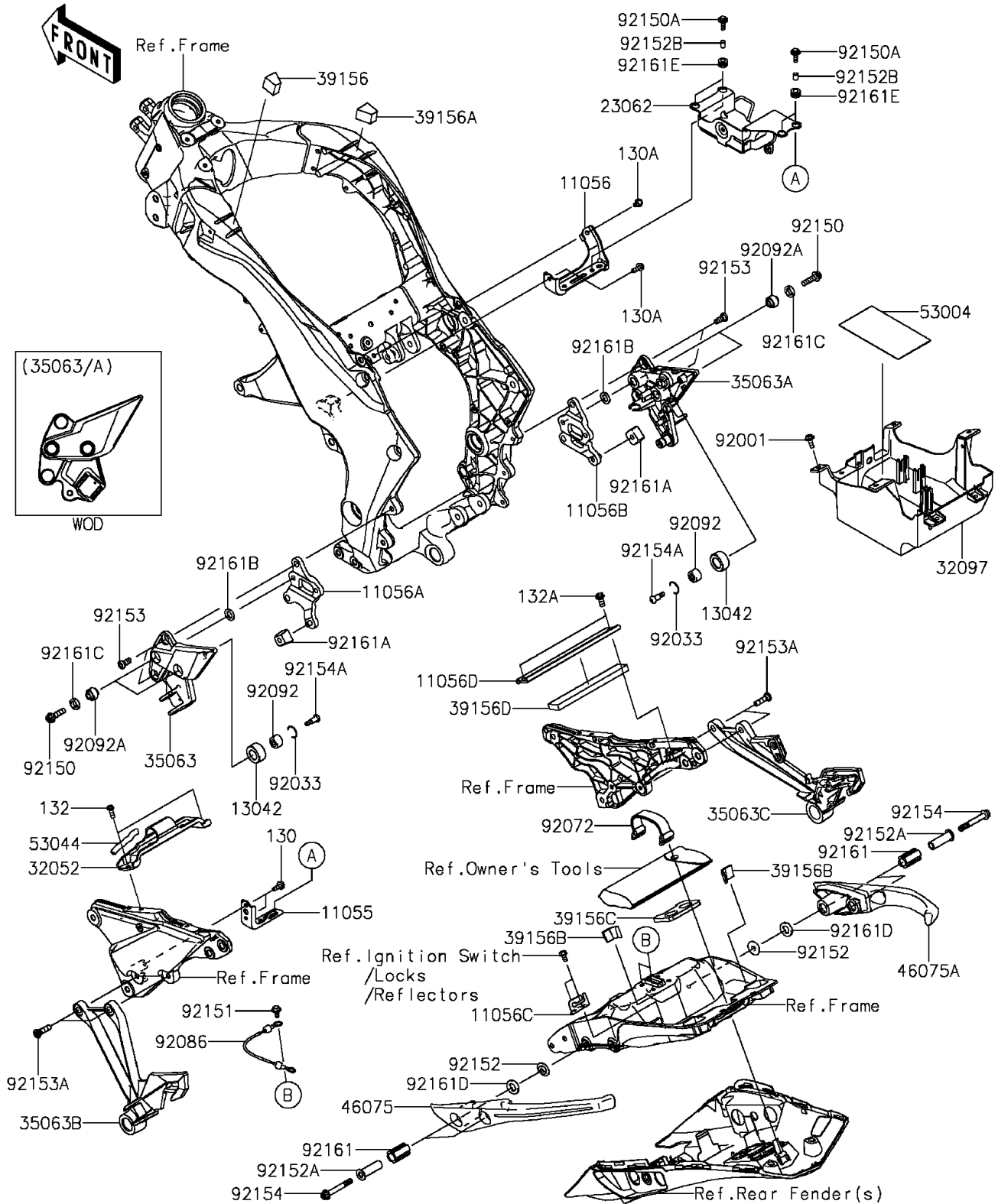


## 2014 NINJA® 1000 ABS PARTS DIAGRAM

Frame Fittings

F2131



## 2014 NINJA® 1000 ABS PARTS LIST

### Frame Fittings

ITEM NAME	PART NUMBER	QUANTITY
BRACKET,REGULATOR (Ref # 11055)	11055-1951	1
BRACKET,REGULATOR (Ref # 11056)	11056-0169	1
BRACKET,FR,LH (Ref # 11056A)	11056-0358	1
BRACKET,FR,RH (Ref # 11056B)	11056-0359	1
BRACKET,HELMET LOCK (Ref # 11056C)	11056-2657	1
BRACKET,CROSS (Ref # 11056D)	11056-3890	1
WEIGHT (Ref # 13042)	13042-0709	1
BRACKET-COMP,ABS (Ref # 23062)	23062-0785	1
BRACKET-TANK (Ref # 32052)	32052-0719	1
CASE-BATTERY (Ref # 32097)	32097-0042	1
STAY,FR,LH,F.S.BLACK (Ref # 35063)	35063-0726-18R	1
STAY,FR,RH,F.S.BLACK (Ref # 35063A)	35063-0905-18R	1
STAY,RR,LH,F.S.BLACK (Ref # 35063B)	35063-0906-18R	1
STAY,RR,RH,F.S.BLACK (Ref # 35063C)	35063-0907-18R	1
PAD,LH (Ref # 39156)	39156-0660	1
PAD,RH (Ref # 39156A)	39156-0661	1
PAD,20X30X3 (Ref # 39156B)	39156-0749	1
PAD,TOOL BOTTOM (Ref # 39156C)	39156-0752	1
PAD,25X170X10 (Ref # 39156D)	39156-1780	1
GRIP,TANDEM,LH (Ref # 46075)	46075-0097	1
GRIP,TANDEM,RH (Ref # 46075A)	46075-0098	1
MAT,BATTERY (Ref # 53004)	53004-0560	1
TRIM (Ref # 53044)	53044-0565	1
BOLT,6X18 (Ref # 92001)	92001-1342	1
RING-SNAP,OD=22.2 (Ref # 92033)	92033-1102-SP	1
BAND,L=100 (Ref # 92072)	92072-071	1
WIRE,HELMET LOCK (Ref # 92086)	92086-0019	1
BUSHING-RUBBER (Ref # 92092)	92092-0554	1
BUSHING-RUBBER,8.4X20X18 (Ref # 92092A)	92092-1018-SP	1

## 2014 NINJA® 1000 ABS PARTS LIST

### Frame Fittings

ITEM NAME	PART NUMBER	QUANTITY
BOLT,SOCKET,8X30 (Ref # 92150)	92150-1156	1
BOLT,FLANGED,6X20 (Ref # 92150A)	92150-1339	1
BOLT,FLANGED,6X13 (Ref # 92151)	92151-1703	1
COLLAR,8X25X4.6 (Ref # 92152)	92152-0980	1
COLLAR,9.2X13.8X38.5 (Ref # 92152A)	92152-1629	1
COLLAR,6.1X8.1X9 (Ref # 92152B)	92152-1782	1
BOLT,SOCKET,8X20 (Ref # 92153)	92153-1621	1
BOLT,SOCKET,8X30 (Ref # 92153A)	92153-1624	1
BOLT,SOCKET,8X60 (Ref # 92154)	92154-0259	1
BOLT,SOCKET,6MM (Ref # 92154A)	92154-0800	1
BOLT-FLANGED,6X14 (Ref # 130)	130BA0614	1
BOLT-FLANGED,6X16 (Ref # 130A)	130BA0616	1
BOLT-FLANGED-SMALL,6X16 (Ref # 132)	132BA0616	1
BOLT-FLANGED-SMALL,8X16 (Ref # 132A)	132BA0816	1
DAMPER (Ref # 92161)	92161-0663	1
DAMPER,STEP STAY (Ref # 92161A)	92161-0942	1
DAMPER,12.5X21X2 (Ref # 92161B)	92161-0943	1
DAMPER,12.5X20X4 (Ref # 92161C)	92161-0944	1
DAMPER,14.5X25X3.5 (Ref # 92161D)	92161-0959	1
DAMPER,8.2X16X8.3 (Ref # 92161E)	92161-1584	1