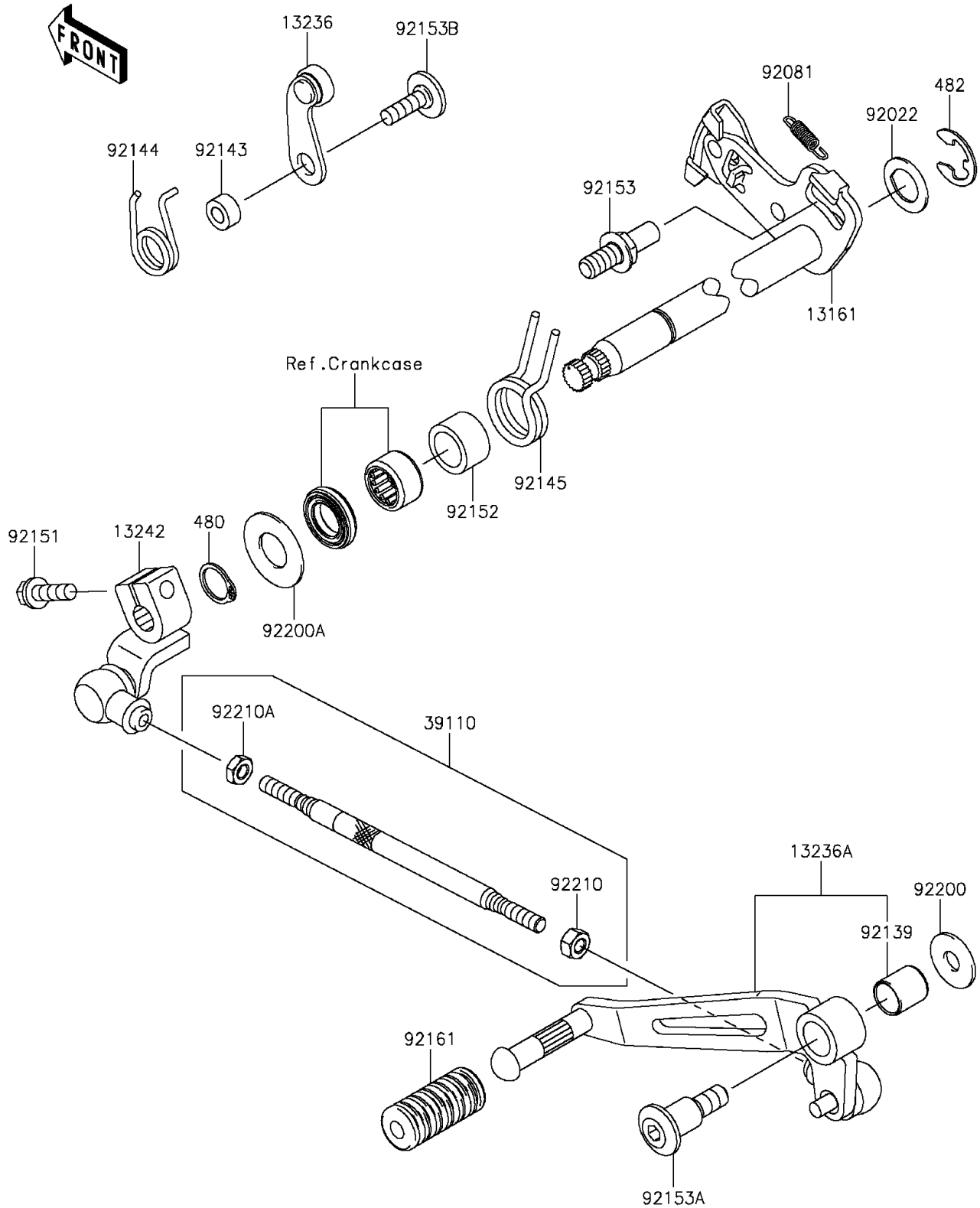


## 2014 NINJA® 1000 ABS PARTS DIAGRAM

Gear Change Mechanism

E1370



## 2014 NINJA® 1000 ABS PARTS LIST

Gear Change Mechanism

| ITEM NAME                              | PART NUMBER | QUANTITY |
|--|-------------|----------|
| LEVER-COMP-CHANGE SHAFT (Ref # 13161)  | 13161-0557  | 1        |
| LEVER-COMP (Ref # 13236)               | 13236-0068  | 1        |
| LEVER-COMP,CHANGE PEDAL (Ref # 13236A) | 13236-0730  | 1        |
| LEVER-ASSY-CHANGE (Ref # 13242)        | 13242-0059  | 1        |
| ROD-ASSY-TIE (Ref # 39110)             | 39110-0033  | 1        |
| CIRCLIP-TYPE-C,14MM (Ref # 480)        | 480J1400    | 1        |
| CIRCLIP-TYPE-E,12MM (Ref # 482)        | 482J0200    | 1        |
| WASHER,CHANGE SHAFT (Ref # 92022)      | 92022-1628  | 1        |
| SPRING,PAWL RETURN (Ref # 92081)       | 92081-1708  | 1        |
| BUSHING (Ref # 92139)                  | 92139-0023  | 1        |
| COLLAR (Ref # 92143)                   | 92143-1595  | 1        |
| SPRING,GEAR POSITION (Ref # 92144)     | 92144-1523  | 1        |
| SPRING (Ref # 92145)                   | 92145-1122  | 1        |
| BOLT,FLANGED,6X20 (Ref # 92151)        | 92151-1226  | 1        |
| COLLAR,14.2X19.9X12.0 (Ref # 92152)    | 92152-1383  | 1        |
| BOLT,RETURN SPRING (Ref # 92153)       | 92153-0421  | 1        |
| BOLT,SOCKET,8X16.7 (Ref # 92153A)      | 92153-0446  | 1        |
| BOLT,6X20 (Ref # 92153B)               | 92153-1505  | 1        |
| DAMPER,CHANGE PEDAL (Ref # 92161)      | 92161-1300  | 1        |
| WASHER,8.0X22.0X1.5 (Ref # 92200)      | 92200-0174  | 1        |
| WASHER (Ref # 92200A)                  | 92200-0265  | 1        |
| NUT,6MM (Ref # 92210)                  | 92210-1100  | 1        |
| NUT,LEFT HANDED,6MM (Ref # 92210A)     | 92210-1101  | 1        |