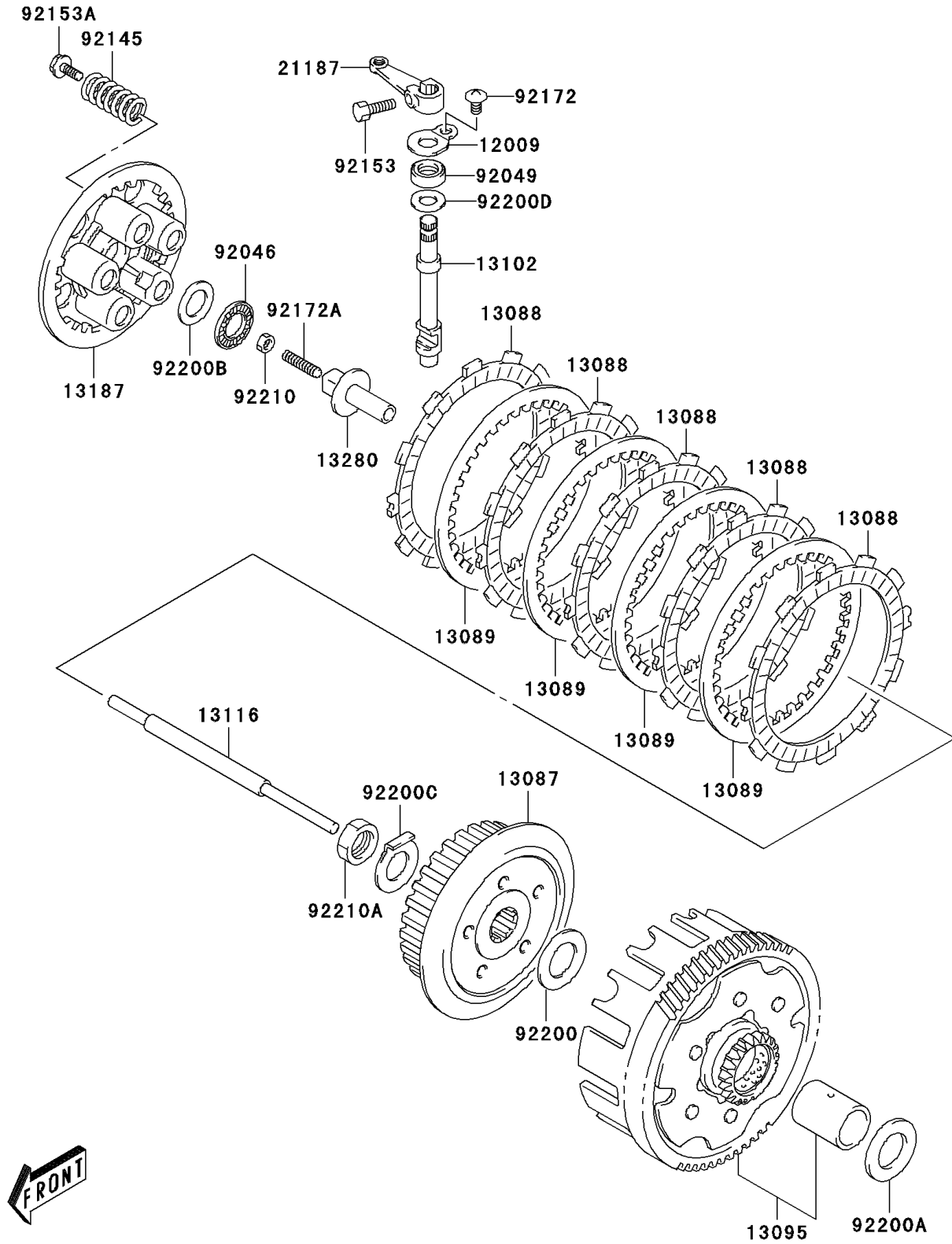


2006 KLX™125 PARTS DIAGRAM

Clutch

E1350



2006 KLX™125 PARTS LIST

Clutch

| ITEM NAME | PART NUMBER | QUANTITY |
|---------------------------------------|-------------|----------|
| RETAINER-VALVE SPRING (Ref # 12009) | 12009-S003 | 1 |
| HUB-CLUTCH (Ref # 13087) | 13087-S001 | 1 |
| PLATE-FRICTION (Ref # 13088) | 13088-S001 | 1 |
| PLATE-CLUTCH (Ref # 13089) | 13089-S001 | 1 |
| HOUSING-COMP-CLUTCH (Ref # 13095) | 13095-S003 | 1 |
| RELEASE-COMP-CLUTCH (Ref # 13102) | 13102-S002 | 1 |
| ROD-PUSH (Ref # 13116) | 13116-S002 | 1 |
| PLATE-CLUTCH OPERATING (Ref # 13187) | 13187-S002 | 1 |
| HOLDER,CLUTCH PUSH (Ref # 13280) | 13280-S012 | 1 |
| ARM-ASSY,CLUTCH RELEASE (Ref # 21187) | 21187-S001 | 1 |
| BEARING-NEEDLE,15X28X2 (Ref # 92046) | 92046-S006 | 1 |
| SEAL-OIL,10X20X6 (Ref # 92049) | 92049-S018 | 1 |
| SPRING (Ref # 92145) | 92145-S041 | 1 |
| BOLT (Ref # 92153) | 92153-S126 | 1 |
| BOLT,5X16 (Ref # 92153A) | 92153-S137 | 1 |
| SCREW (Ref # 92172) | 92172-S092 | 1 |
| SCREW (Ref # 92172A) | 92172-S093 | 1 |
| WASHER (Ref # 92200) | 92200-S025 | 1 |
| WASHER (Ref # 92200A) | 92200-S055 | 1 |
| WASHER,15.5X28X1 (Ref # 92200B) | 92200-S056 | 1 |
| WASHER (Ref # 92200C) | 92200-S060 | 1 |
| WASHER,10X20X1.0 (Ref # 92200D) | 92200-S061 | 1 |
| NUT,6X3.6 (Ref # 92210) | 92210-S047 | 1 |
| NUT (Ref # 92210A) | 92210-S157 | 1 |