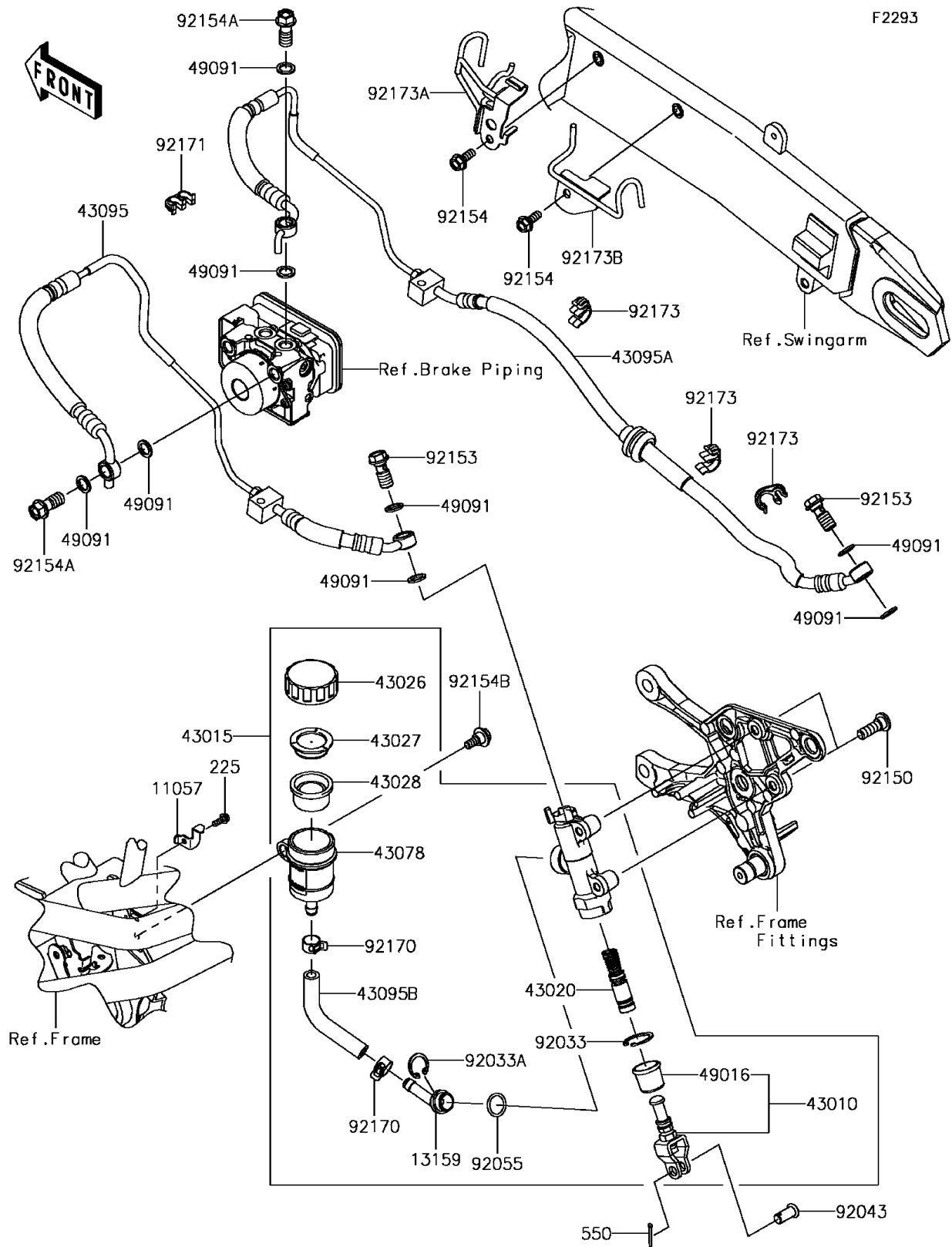


2017 PARTS DIAGRAM

Rear Master Cylinder



2017 PARTS LIST

Rear Master Cylinder

ITEM NAME	PART NUMBER	QUANTITY
SCREW-PAN-WSP-CROS,4X12 (Ref # 225)	225AB0412	1
PIN-COTTER,2.0X15 (Ref # 550)	550AA2015	1
BRACKET (Ref # 11057)	11057-0258	1
CONNECTOR (Ref # 13159)	13159-0008	1
ROD-ASSY-BRAKE (Ref # 43010)	43010-0020	1
CYLINDER-ASSY-MASTER,RR (Ref # 43015)	43015-0650	1
PISTON-COMP-BRAKE (Ref # 43020)	43020-1094	1
CAP-BRAKE (Ref # 43026)	43026-0009	1
PLATE-DIAPHRAGM (Ref # 43027)	43027-1053	1
DIAPHRAGM (Ref # 43028)	43028-1065	1
RESERVOIR (Ref # 43078)	43078-0060	1
HOSE-BRAKE,RR M/CYL.-ABS UNIT (Ref # 43095)	43095-1426	1
HOSE-BRAKE,ABS UNIT-RR CALIPER (Ref # 43095A)	43095-1427	1
HOSE-BRAKE,RR M/CYL. (Ref # 43095B)	43095-1432	1
COVER-SEAL,BRAKE PISTON (Ref # 49016)	49016-1103	1
WASHER-SEAL,10.1X14.5X1.5 (Ref # 49091)	49091-0001	1
RING-SNAP,20.9X24.6X1.2 (Ref # 92033)	92033-0079	1
RING-SNAP,20.5MM (Ref # 92033A)	92033-1186	1
PIN (Ref # 92043)	92043-0904	1
RING-O,14.8X2.4 (Ref # 92055)	92055-0741	1
BOLT,SOCKET,8X25 (Ref # 92150)	92150-1837	1
BOLT,OIL,L=23 (Ref # 92153)	92153-0627	1
BOLT,FLANGED,6X16 (Ref # 92154)	92154-1055	1
BOLT,BANJO,10X22 (Ref # 92154A)	92154-1138	1
BOLT,FLANGED,6X16 (Ref # 92154B)	92154-2685	1
CLAMP,HOSE (Ref # 92170)	92170-1091	1
CLAMP (Ref # 92171)	92171-0817	1
CLAMP,HOSE&SENSOR LINE (Ref # 92173)	92173-1613	1
CLAMP,SWA,FR (Ref # 92173A)	92173-1640	1

2017 PARTS LIST

Rear Master Cylinder

ITEM NAME	PART NUMBER	QUANTITY
CLAMP,SWA,RR (Ref # 92173B)	92173-1768	1