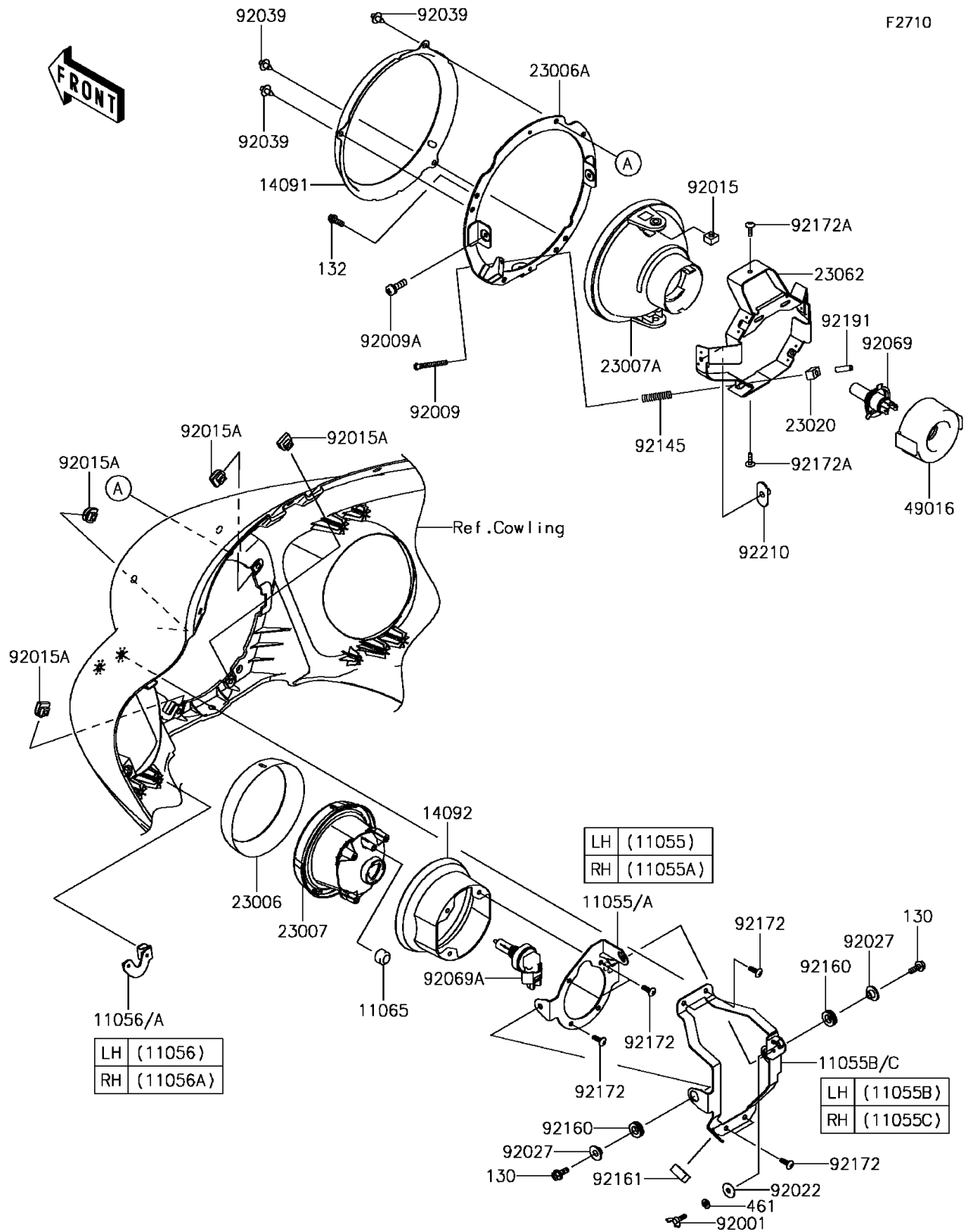


## 2013 Vulcan® 1700 Voyager® ABS PARTS DIAGRAM

Headlight(s)



## 2013 Vulcan® 1700 Voyager® ABS PARTS LIST

Headlight(s)

ITEM NAME	PART NUMBER	QUANTITY
BOLT-FLANGED,6X16 (Ref # 130)	130AA0616	1
BOLT-FLANGED-SMALL,6X16 (Ref # 132)	132BA0616	1
WASHER-SPRING,6MM (Ref # 461)	461DA0600	1
BRACKET,AIMING,LH (Ref # 11055)	11055-0730	1
BRACKET,AIMING,RH (Ref # 11055A)	11055-0990	1
BRACKET,AIMING,LH (Ref # 11055B)	11055-1779	1
BRACKET,AIMING,RH (Ref # 11055C)	11055-1780	1
BRACKET,SUB LAMP,LH,LWR (Ref # 11056)	11056-1145	1
BRACKET,SUB LAMP,RH,LWR (Ref # 11056A)	11056-1146	1
CAP (Ref # 11065)	11065-0135	1
COVER,RETAINER (Ref # 14091)	14091-1620	1
COVER (Ref # 14092)	14092-0130	1
RIM-LAMP (Ref # 23006)	23006-0015	1
RIM-LAMP (Ref # 23006A)	23006-0016	1
LENS-COMP,SUB LAMP (Ref # 23007)	23007-0118	1
LENS-COMP,HEAD LAMP (Ref # 23007A)	23007-1396	1
NUT,4MM,FOCUS ADJUST (Ref # 23020)	23020-018	1
BRACKET-COMP,HEAD LAMP (Ref # 23062)	23062-1132	1
COVER-SEAL,SOCKET (Ref # 49016)	49016-1203	1
BOLT,WING,6X15 (Ref # 92001)	92001-1703	1
SCREW,FOCUS ADJUST,4X60 (Ref # 92009)	92009-1816	1
SCREW,5X16 (Ref # 92009A)	92009-1879	1
NUT,5MM (Ref # 92015)	92015-1157	1
NUT,CLIP,6MM (Ref # 92015A)	92015-1904	1
WASHER,6.5X20X1.6 (Ref # 92022)	92022-1557	1
COLLAR,L=7.4 (Ref # 92027)	92027-1848	1
RIVET (Ref # 92039)	92039-0083	1
BULB,12V 60/55W,H4 (Ref # 92069)	92069-0050	1
BULB,12V 35W,H8 (Ref # 92069A)	92069-0054	1

## 2013 Vulcan® 1700 Voyager® ABS PARTS LIST

Headlight(s)

ITEM NAME	PART NUMBER	QUANTITY
SPRING,HEAD LAMP LENS (Ref # 92145)	92145-1268	1
DAMPER (Ref # 92160)	92160-1278	1
DAMPER (Ref # 92161)	92161-0718	1
SCREW,TAPPING,5X16 (Ref # 92172)	92172-0238	1
SCREW,TAPPING,4X16 (Ref # 92172A)	92172-0391	1
TUBE,3.5X5.5X19 (Ref # 92191)	92191-1217	1
NUT,SPECIAL,5MM (Ref # 92210)	92210-1060	1