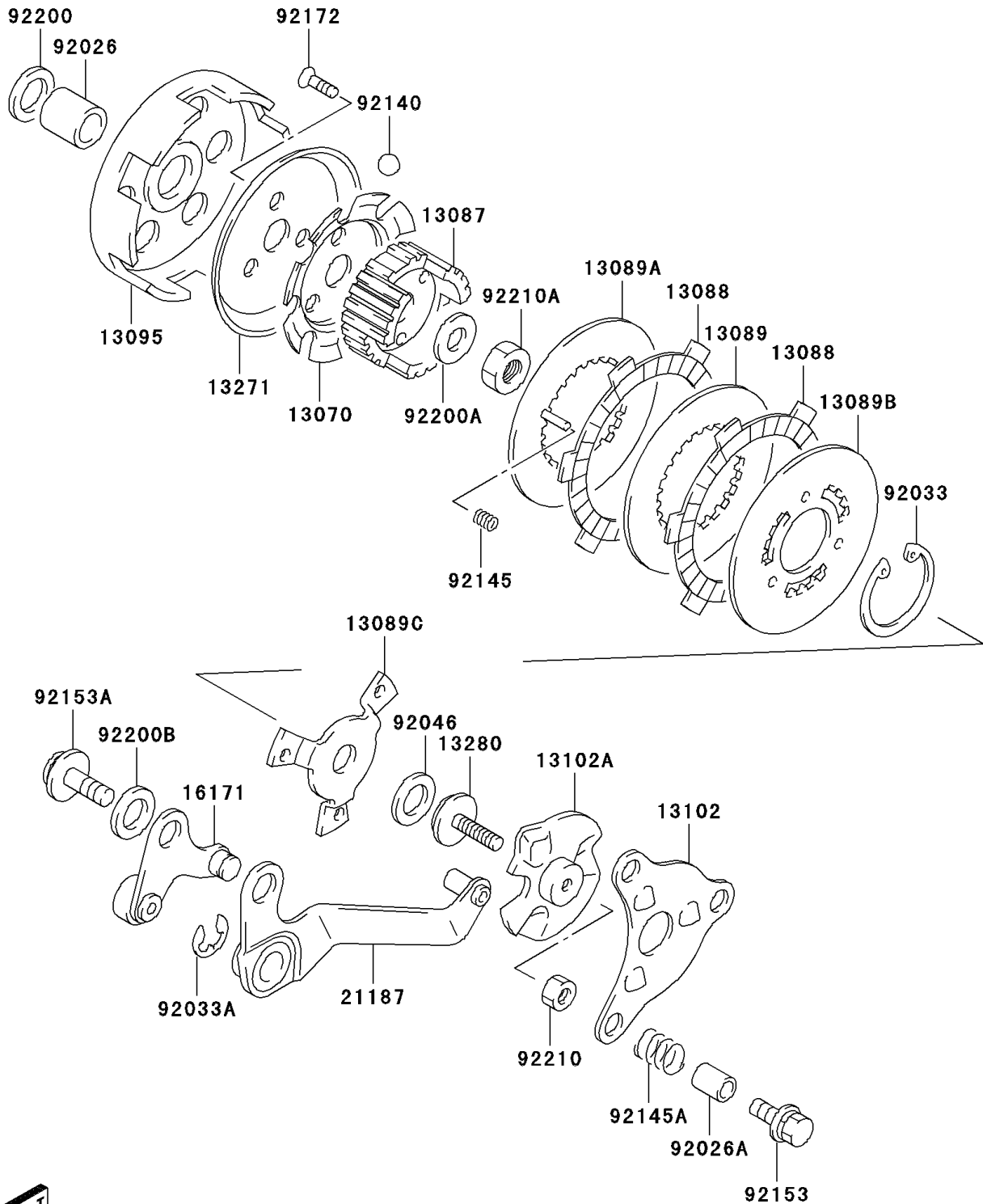


## 2003 KDX™50 PARTS DIAGRAM

Clutch

E1350



## 2003 KDX™50 PARTS LIST

### Clutch

ITEM NAME	PART NUMBER	QUANTITY
GUIDE,CLUTCH BALL (Ref # 13070)	13070-S014	1
HUB-CLUTCH (Ref # 13087)	13087-S004	1
PLATE-FRICTION (Ref # 13088)	13088-S005	1
PLATE-CLUTCH (Ref # 13089)	13089-S004	1
PLATE-CLUTCH,CLUTCH INNER (Ref # 13089A)	13089-S005	1
PLATE-CLUTCH,OUTER (Ref # 13089B)	13089-S006	1
PLATE-CLUTCH,CLUTCH PRESSURE (Ref # 13089C)	13089-S007	1
HOUSING-COMP-CLUTCH (Ref # 13095)	13095-S007	1
RELEASE-COMP-CLUTCH (Ref # 13102)	13102-S004	1
RELEASE-COMP-CLUTCH (Ref # 13102A)	13102-S005	1
PLATE,CLUTCH BALL (Ref # 13271)	13271-S055	1
HOLDER,CLUTCH PUSH (Ref # 13280)	13280-S029	1
LINK,RELEASE ARM (Ref # 16171)	16171-S001	1
ARM-ASSY,CLUTCH RELEASE PLATE (Ref # 21187)	21187-S006	1
SPACER,DRIVEN GEAR (Ref # 92026)	92026-S056	1
SPACER,RELEASE PLATE SPRING (Ref # 92026A)	92026-S112	1
RING-SNAP,CLUTCH SLEEVE HUB (Ref # 92033)	92033-S043	1
RING-SNAP,RELEASE PLATE ARM (Ref # 92033A)	92033-S044	1
BEARING-NEEDLE (Ref # 92046)	92046-S022	1
BALL,OIL CHECK VALVE (Ref # 92140)	92140-S003	1
SPRING (Ref # 92145)	92145-S114	1
SPRING,CLUTCH RELEASE PLATE (Ref # 92145A)	92145-S115	1
BOLT (Ref # 92153)	92153-S013	1
BOLT,8X17 (Ref # 92153A)	92153-S316	1
SCREW (Ref # 92172)	92172-S012	1
WASHER,DRIVEN GEAR (Ref # 92200)	92200-S085	1
WASHER,CLUTCH (Ref # 92200A)	92200-S087	1
WASHER,8X16X1.0 (Ref # 92200B)	92200-S165	1
NUT (Ref # 92210)	92210-S001	1

## 2003 KDX™50 PARTS LIST

Clutch

ITEM NAME	PART NUMBER	QUANTITY
NUT (Ref # 92210A)	92210-S116	1