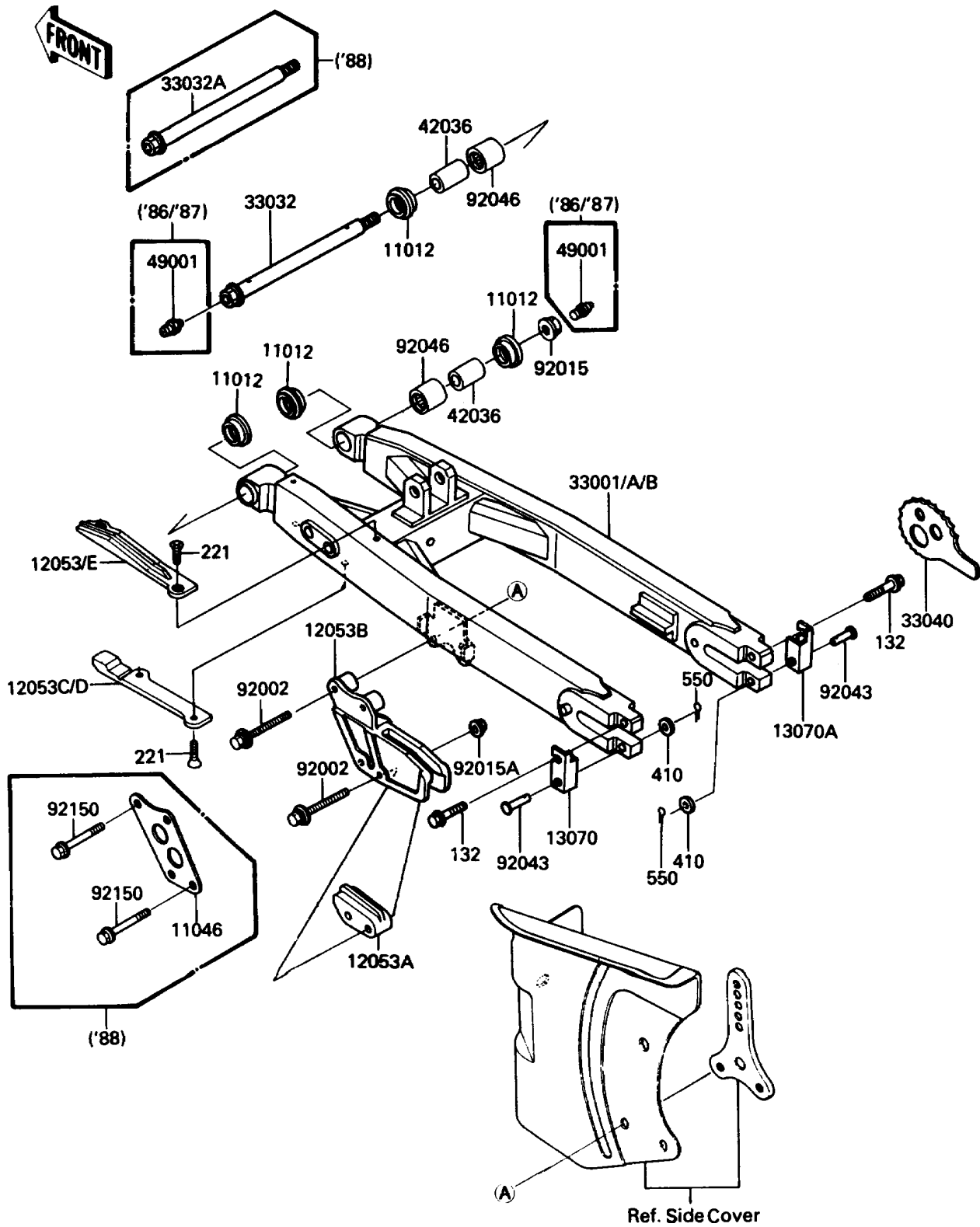


1986 KDX™200 PARTS DIAGRAM

Swingarm

F2141-0033



1986 KDX™200 PARTS LIST

Swingarm

ITEM NAME	PART NUMBER	QUANTITY
CAP,SWING ARM (Ref # 11012)	11012-1259	1
GUIDE-CHAIN,FR,UPP (Ref # 12053)	12053-1101	1
GUIDE-CHAIN,RR,INSIDE (Ref # 12053A)	12053-1105	1
GUIDE-CHAIN,RR (Ref # 12053B)	12053-1124	1
GUIDE-CHAIN,FR,LWR (Ref # 12053C)	12053-1144	1
GUIDE,LH (Ref # 13070)	13070-1141	1
GUIDE,RH (Ref # 13070A)	13070-1142	1
ARM-COMP-SWING (Ref # 33001)	33001-1259	1
SHAFT-SWING ARM (Ref # 33032)	33032-1118	1
ADJUSTER-CHAIN (Ref # 33040)	33040-1067	1
SLEEVE,L=36 (Ref # 42036)	42036-1171	1
NIPPLE-GREASE (Ref # 49001)	49001-1051	1
BOLT,6X50 (Ref # 92002)	92002-1872	1
NUT,FLANGED,14MM (Ref # 92015)	92015-1032	1
NUT,FLANGED,6MM (Ref # 92015A)	92015-1078	1
PIN,6X17 (Ref # 92043)	92043-107	1
BEARING-NEEDLE,TA2030Z (Ref # 92046)	92046-1128	1
BOLT-FLANGED-SMALL (Ref # 132)	132G0610	1
SCREW-CSK-CROS,6X10 (Ref # 221)	221B0610	1
WASHER-PLAIN-SMALL,6MM (Ref # 410)	410B0600	1
PIN-COTTER,2.0X15 (Ref # 550)	550D2015	1