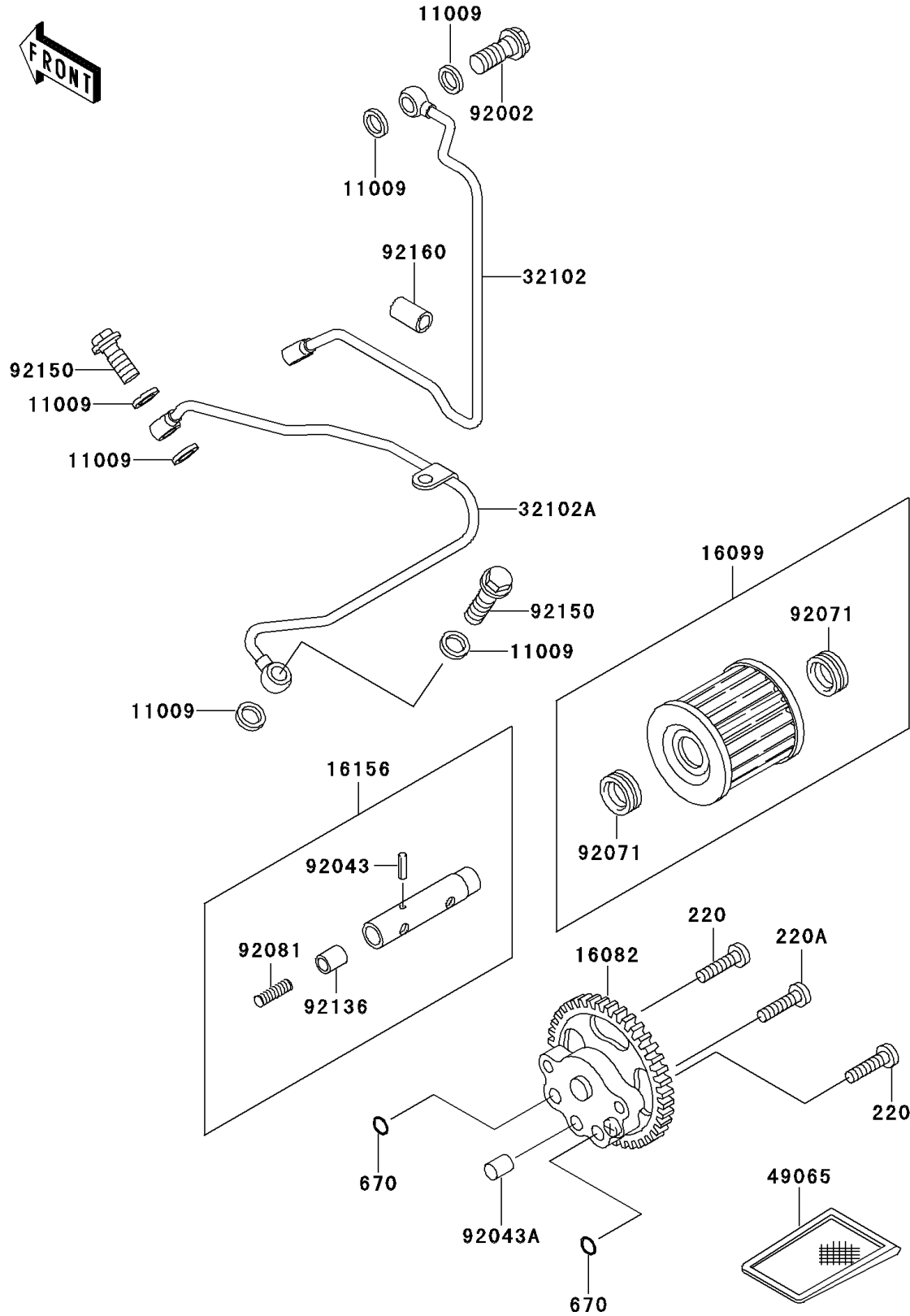


1992 Bayou® 220 PARTS DIAGRAM

Oil Pump/Oil Filter

E1710



1992 Bayou® 220 PARTS LIST

Oil Pump/Oil Filter

| ITEM NAME | PART NUMBER | QUANTITY |
|--|-------------|----------|
| SCREW-PAN-CROS,6X20,WHITE (Ref # 220) | 220B0620 | 1 |
| SCREW-PAN-CROS,6X30 (Ref # 220A) | 220B0630 | 1 |
| O RING,10MM (Ref # 670) | 670B1510 | 1 |
| GASKET,OIL PIPE,8.2X14X1.0 (Ref # 11009) | 11009-1344 | 1 |
| PUMP-ASSY-OIL (Ref # 16082) | 16082-1090 | 1 |
| ELEMENT-OIL FILTER (Ref # 16099) | 16099-004 | 1 |
| PISTON-ASSY,VALVE,BY-PASS (Ref # 16156) | 16156-002 | 1 |
| PIPE,CYLINDER HEAD (Ref # 32102) | 32102-1594 | 1 |
| PIPE,TRANSMISSION (Ref # 32102A) | 32102-1595 | 1 |
| FILTER-OIL (Ref # 49065) | 49065-1058 | 1 |
| BOLT,BANJO,8X25 (Ref # 92002) | 92002-1987 | 1 |
| PIN,SPRING,2.2X13.5 (Ref # 92043) | 92043-123 | 1 |
| PIN,6.2X8X14 (Ref # 92043A) | 92043-1263 | 1 |
| GROMMET,OIL FILTER (Ref # 92071) | 92071-101 | 1 |
| SPRING,PISTON (Ref # 92081) | 92081-043 | 1 |
| VALVE (Ref # 92136) | 92136-002 | 1 |
| BOLT,BANJO,8X20 (Ref # 92150) | 92150-1557 | 1 |
| DAMPER,4.5X11X20 (Ref # 92160) | 92160-1074 | 1 |