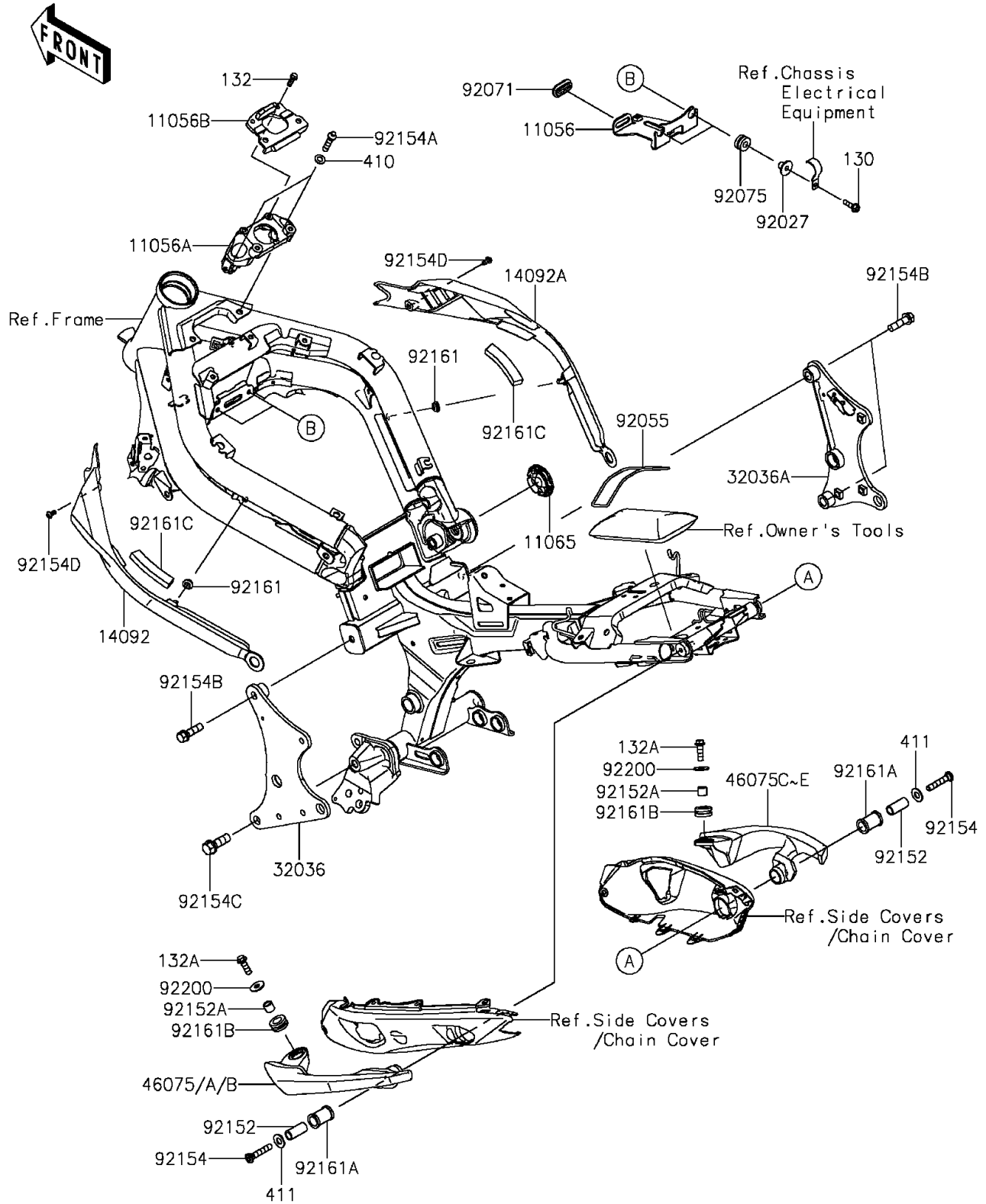


## 2012 ER-6n PARTS DIAGRAM

Frame Fittings

F2131



## 2012 ER-6n PARTS LIST

### Frame Fittings

ITEM NAME	PART NUMBER	QUANTITY
BOLT-FLANGED,6X22 (Ref # 130)	130BA0622	1
BOLT-FLANGED-SMALL,6X16 (Ref # 132)	132BA0616	1
BOLT-FLANGED-SMALL,8X25 (Ref # 132A)	132BA0825	1
WASHER-PLAIN-SMALL,8MM (Ref # 410)	410AA0800	1
WASHER-PLAIN,10MM (Ref # 411)	411AA1000	1
BRACKET,REGULATOR (Ref # 11056)	11056-0801	1
BRACKET,IGNITION SW. (Ref # 11056A)	11056-0805	1
BRACKET,IGNITION SW.,UPP (Ref # 11056B)	11056-1717	1
CAP,PIVOT COVER,RH,P.SILVER (Ref # 11065)	11065-0264-458	1
COVER,FRAME,LH (Ref # 14092)	14092-0740	1
COVER,FRAME,RH (Ref # 14092A)	14092-0741	1
BRACKET-SWINGARM,LH (Ref # 32036)	32036-0303	1
BRACKET-SWINGARM,RH (Ref # 32036A)	32036-0304	1
GRIP,TANDEM,LH,F.S.BLACK (Ref # 46075A)	46075-0565-18R	1
GRIP,TANDEM,LH,F.M.GRAY (Ref # 46075B)	46075-0565-26M	1
GRIP,TANDEM,RH,F.S.BLACK (Ref # 46075D)	46075-0566-18R	1
GRIP,TANDEM,RH,F.M.GRAY (Ref # 46075E)	46075-0566-26M	1
COLLAR,L=13.1,BLACK (Ref # 92027)	92027-1450	1
RING-O,91.6X3.4 (Ref # 92055)	92055-0719	1
GROMMET (Ref # 92071)	92071-0013	1
DAMPER (Ref # 92075)	92075-209	1
COLLAR,10.4X15X33 (Ref # 92152)	92152-0964	1
COLLAR,9.2X13.8X12.5 (Ref # 92152A)	92152-1526	1
BOLT,SOCKET,8X40 (Ref # 92154)	92154-0544	1
BOLT,TORX,8X35 (Ref # 92154A)	92154-0730	1
BOLT,FLANGED,10X35 (Ref # 92154B)	92154-0862	1
BOLT,FLANGED,12X35 (Ref # 92154C)	92154-0863	1
BOLT,SOCKET,5X12 (Ref # 92154D)	92154-0917	1
DAMPER (Ref # 92161)	92161-0631	1

## 2012 ER-6n PARTS LIST

Frame Fittings

ITEM NAME	PART NUMBER	QUANTITY
DAMPER,15X23X33.5 (Ref # 92161A)	92161-0940	1
DAMPER,14X26X12 (Ref # 92161B)	92161-1444	1
DAMPER,10X80X16 (Ref # 92161C)	92161-1470	1
WASHER,8.5X23X1.6 (Ref # 92200)	92200-0752	1