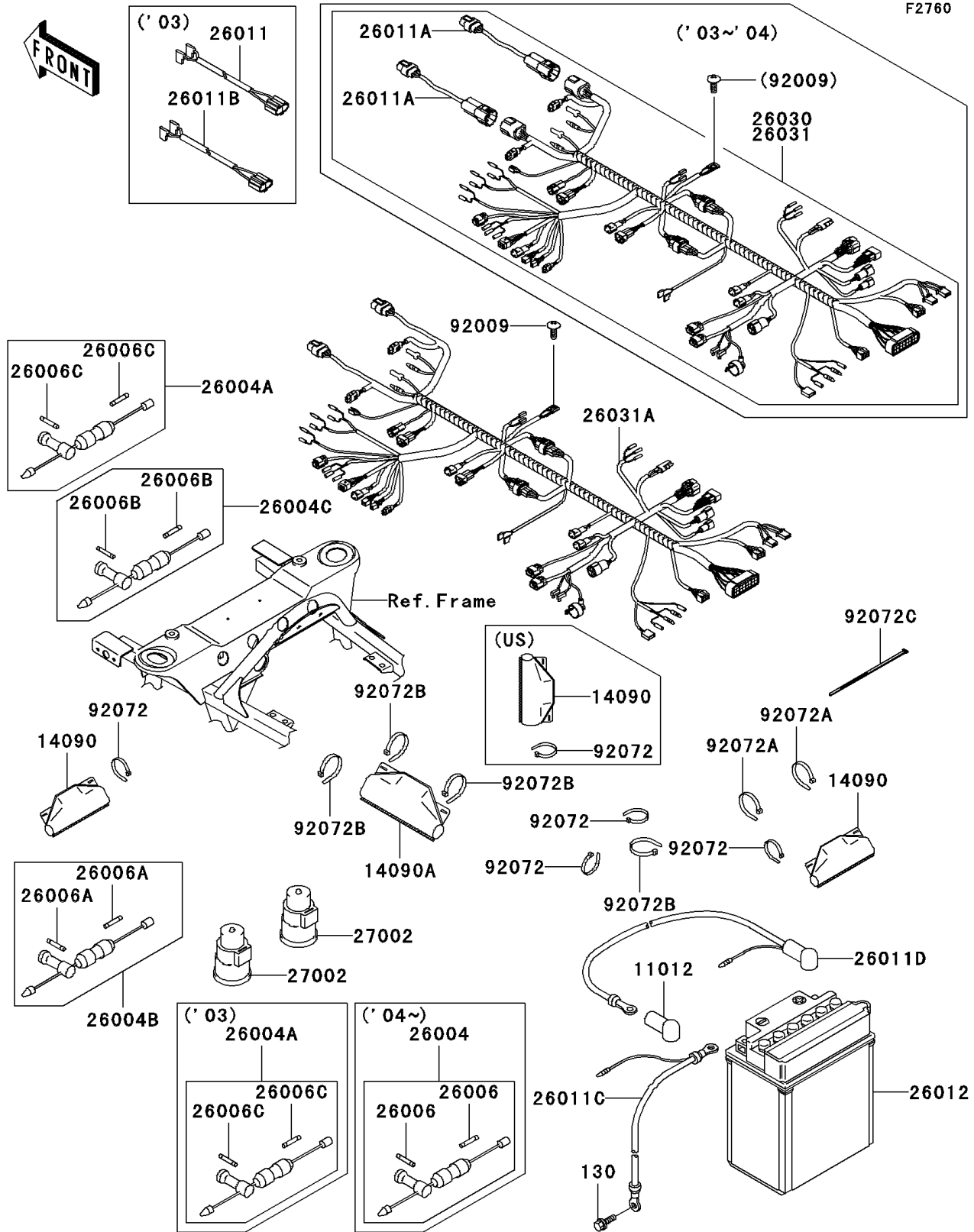


## 2003 Prairie® 360 4x4 Advantage Classic PARTS DIAGRAM

Chassis Electrical Equipment



F2760

## 2003 Prairie® 360 4x4 Advantage Classic PARTS LIST

Chassis Electrical Equipment

ITEM NAME	PART NUMBER	QUANTITY
BOLT-FLANGED,6X12 (Ref # 130)	130B0612	1
CAP,TERMINAL (Ref # 11012)	11012-1354	1
COVER,COUPLER (Ref # 14090A)	14090-1611	1
FUSE-ASSY (Ref # 26004A)	26004-1114	1
FUSE-ASSY (Ref # 26004B)	26004-1127	1
FUSE-ASSY (Ref # 26004C)	26004-7501	1
FUSE,30A,L=30 (Ref # 26006A)	26006-1059	1
FUSE,20A,L=32 (Ref # 26006B)	26006-1064	1
FUSE,5A,L=30 (Ref # 26006C)	26006-1074	1
WIRE-LEAD,OIL INDICATOR SWITCH (Ref # 26011)	26011-1831	1
WIRE-LEAD,HEAD LAMP (Ref # 26011A)	26011-1834	1
WIRE-LEAD,OIL COOLER FAN SWITC (Ref # 26011B)	26011-1835	1
WIRE-LEAD,BATTERY(-) (Ref # 26011C)	26011-7503	1
WIRE-LEAD,BATTERY(+) (Ref # 26011D)	26011-7507	1
BATTERY,YB14A-A2,12V 14AH (Ref # 26012)	26012-0006	1
HARNESS,MAIN (Ref # 26030)	26030-7507	1
RELAY-ASSY (Ref # 27002)	27002-1095	1
SCREW (Ref # 92009)	92009-1166	1
BAND,L=149 (Ref # 92072A)	92072-031	1
BAND,L=186 (Ref # 92072B)	92072-056	1
BAND,L=188 (Ref # 92072C)	92072-1239	1
COVER,COUPLER (Ref # 14090)	14090-1331	2
BAND,L=123 (Ref # 92072)	92072-030	2