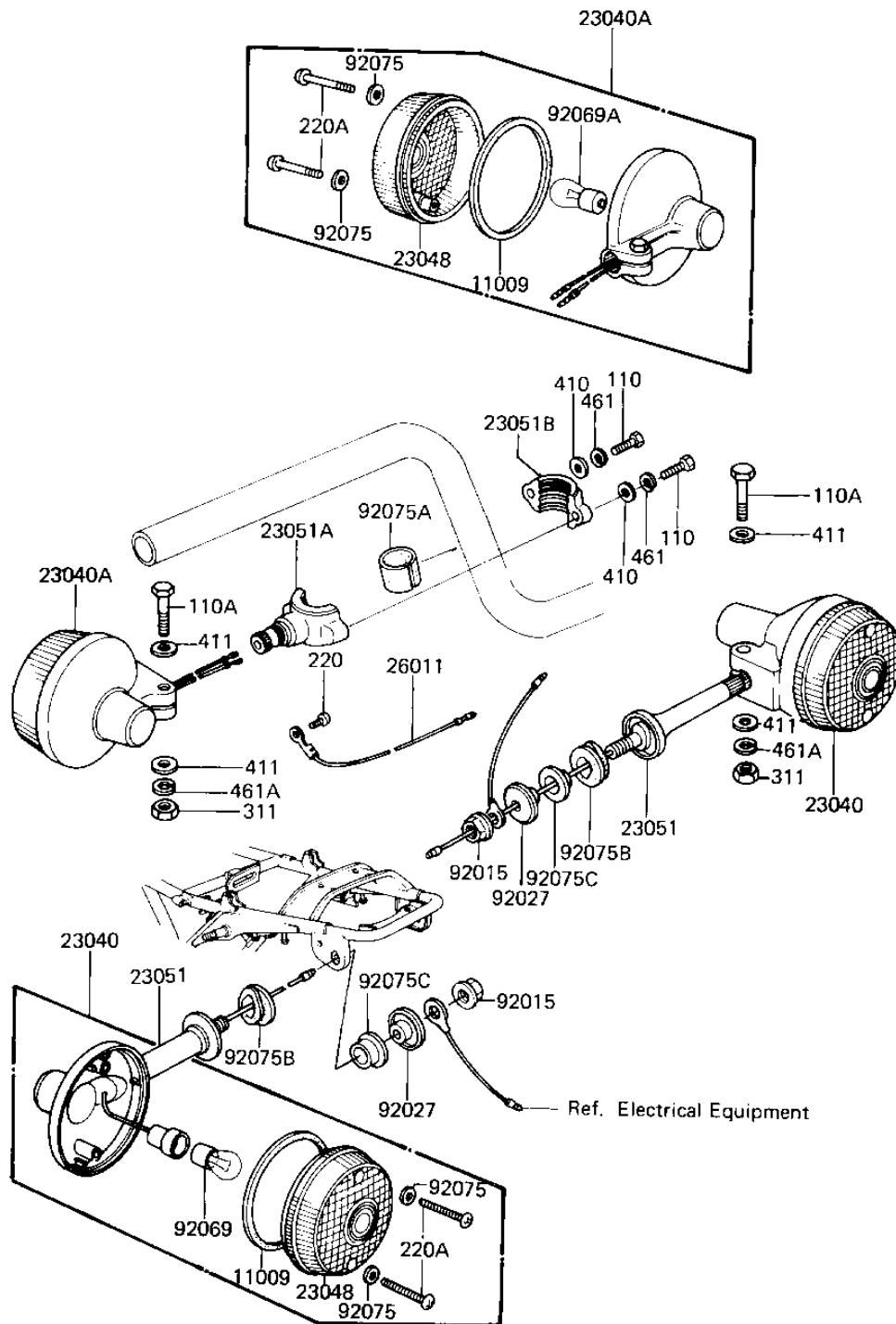


1982 750 CSR-Twin PARTS DIAGRAM

TURN SIGNALS

F2730-0045



1982 750 CSR-Twin PARTS LIST

TURN SIGNALS

ITEM NAME	PART NUMBER	QUANTITY
GASKET-SIG LAMP LENS (Ref # 11009)	23050-003	1
LAMP,TURN SIGNAL (Ref # 23040)	23040-054	1
LAMP,FRNT,TURN SIGNA (Ref # 23040A)	23040-1004	1
LENS,TURN SIGNAL LAM (Ref # 23048)	23048-1001	1
BRACKET,TURN SIGNAL. (Ref # 23051)	23051-053	1
BRACKET,FRNT TURN SI (Ref # 23051A)	23051-1004	1
BRACKET,SIGNAL LAMP (Ref # 23051B)	23051-1013	1
WIRE-TURN SIGNAL LEA (Ref # 26011)	26011-061	1
NUT,FLANGED,10MM (Ref # 92015)	92015-1428	1
COLLAR (Ref # 92027)	92027-147	1
BULB 12V 32CP (Ref # 92069)	92069-055	1
BULB,12V 23/8W (Ref # 92069A)	92069-060	1
WASHER-PLAIN,4MM (Ref # 92075)	23058-002	1
DAMPER RUBBER (Ref # 92075A)	23066-003	1
DAMPER RUBBER (Ref # 92075B)	92075-128	1
DAMPER RUBBER,SIG LM (Ref # 92075C)	92075-158	1
BOLT (Ref # 110)	110N0516	1
BOLT-UPSET (Ref # 110A)	112G0630	1
SCREW PAN HEAD 3X5 (Ref # 220)	220B0305A	1
SCREW-PAN HEAD,4X20 (Ref # 220A)	220E0420A	1
NUT 6MM (Ref # 311)	311B0600	1
WASHER-PLAIN,5MM (Ref # 410)	410D0500	1
WASHER PLAIN 6MM (Ref # 411)	411B0600	1
WASHER SPRING 5MM (Ref # 461)	461F0500	1
WASHER SPRING 6MM (Ref # 461A)	461F0600	1