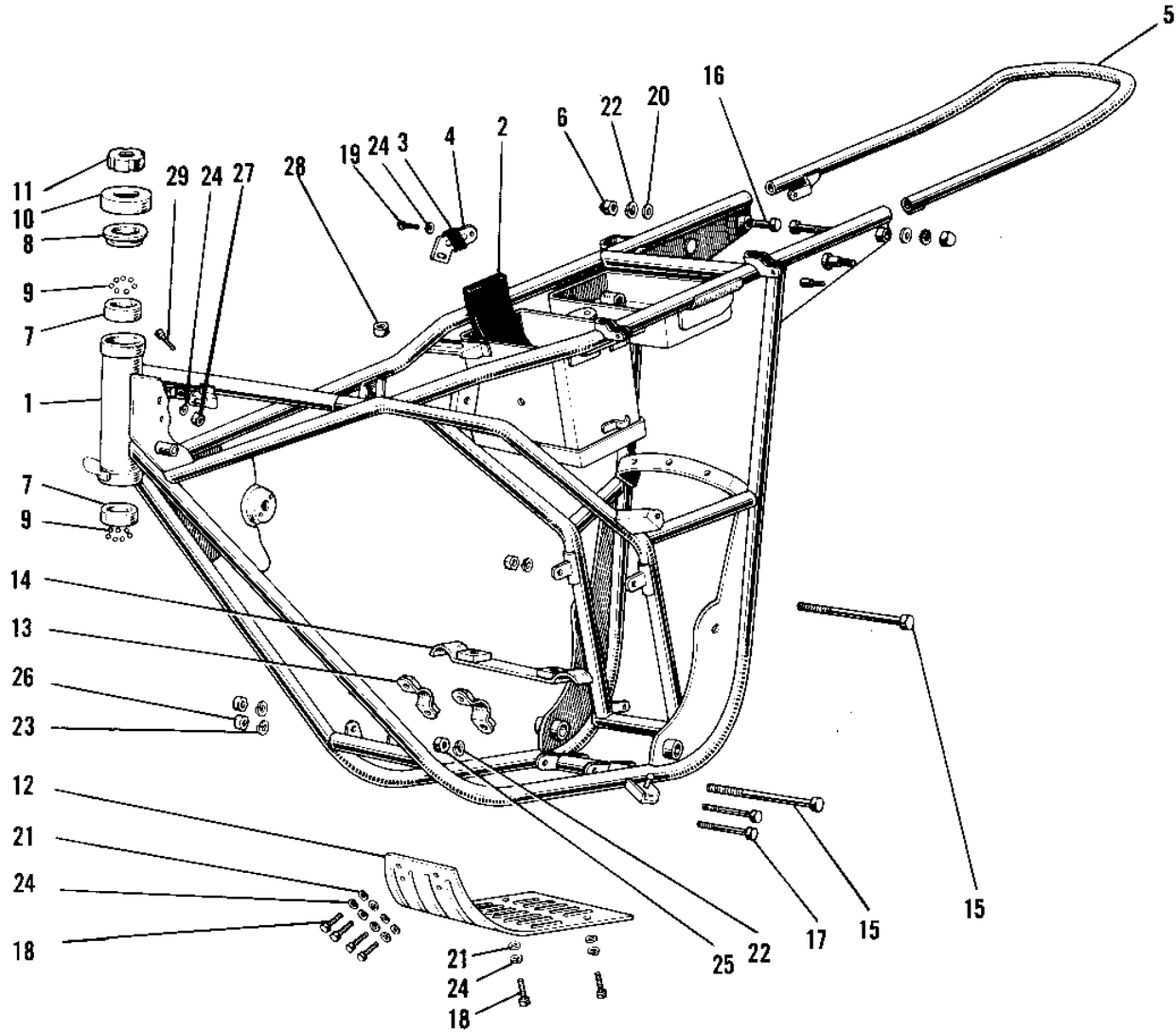


1968 PARTS DIAGRAM

FRAME/FRAME FITTINGS



1968 PARTS LIST

FRAME/FRAME FITTINGS

ITEM NAME	PART NUMBER	QUANTITY
UNAVAILABLE IN PRICE BOOK (Ref # 1)	32002-027	1
MAT BATTERY (Ref # 2)	32103-006	1
PROTECTOR BATTERY (Ref # 3)	31082-002	1
BAND BATTERY (Ref # 4)	32100-012	1
STAY REAR FENDER (Ref # 5)	35032-013	1
NUT SHOCK ABSORBER (Ref # 6)	92020-003	1
RACE STEERING BEARING (Ref # 7)	92048-005	1
CONE STERNG BERG UPP (Ref # 8)	92047-003	1
BALL STEEL 1/4' (Ref # 9)	600A0800	1
CAP STEERING STEM (Ref # 10)	46098-005	1
NUT STEERING STEM LCK (Ref # 11)	92090-006	1
GUARD ENGINE (Ref # 12)	55011-006	1
BRACKET ENG GUARD FRT (Ref # 13)	55016-001	1
BRACKET ENG GUARD RR (Ref # 14)	55016-002	1
BOLT,HEX HEAD,10X125 (Ref # 15)	92001-1248	1
BOLT-SMALL-FINE,10X45 (Ref # 16)	113G1045	1
UNAVAILABLE IN PRICE BOOK (Ref # 17)	116B0856	1
BOLT-UPSET,6X16 (Ref # 18)	112G0616	1
SCREW PAN HEAD 6X16 (Ref # 19)	220B0616	1
WASHER PLAIN 10MM (Ref # 20)	410B1000	1
WASHER PLAIN 6MM (Ref # 21)	410B0600	1
WASHER SPRING 10MM (Ref # 22)	461F1000	1
WASHER SPRING 8MM (Ref # 23)	461F0800	1
WASHER SPRING 6MM (Ref # 24)	461F0600	1
NUT,10MM (Ref # 25)	314B1000	1
NUT,8MM (Ref # 26)	311B0800	1
NUT 6MM (Ref # 27)	311B0600	2
UNAVAILABLE IN PRICE BOOK (Ref # 29)	116B0660	1