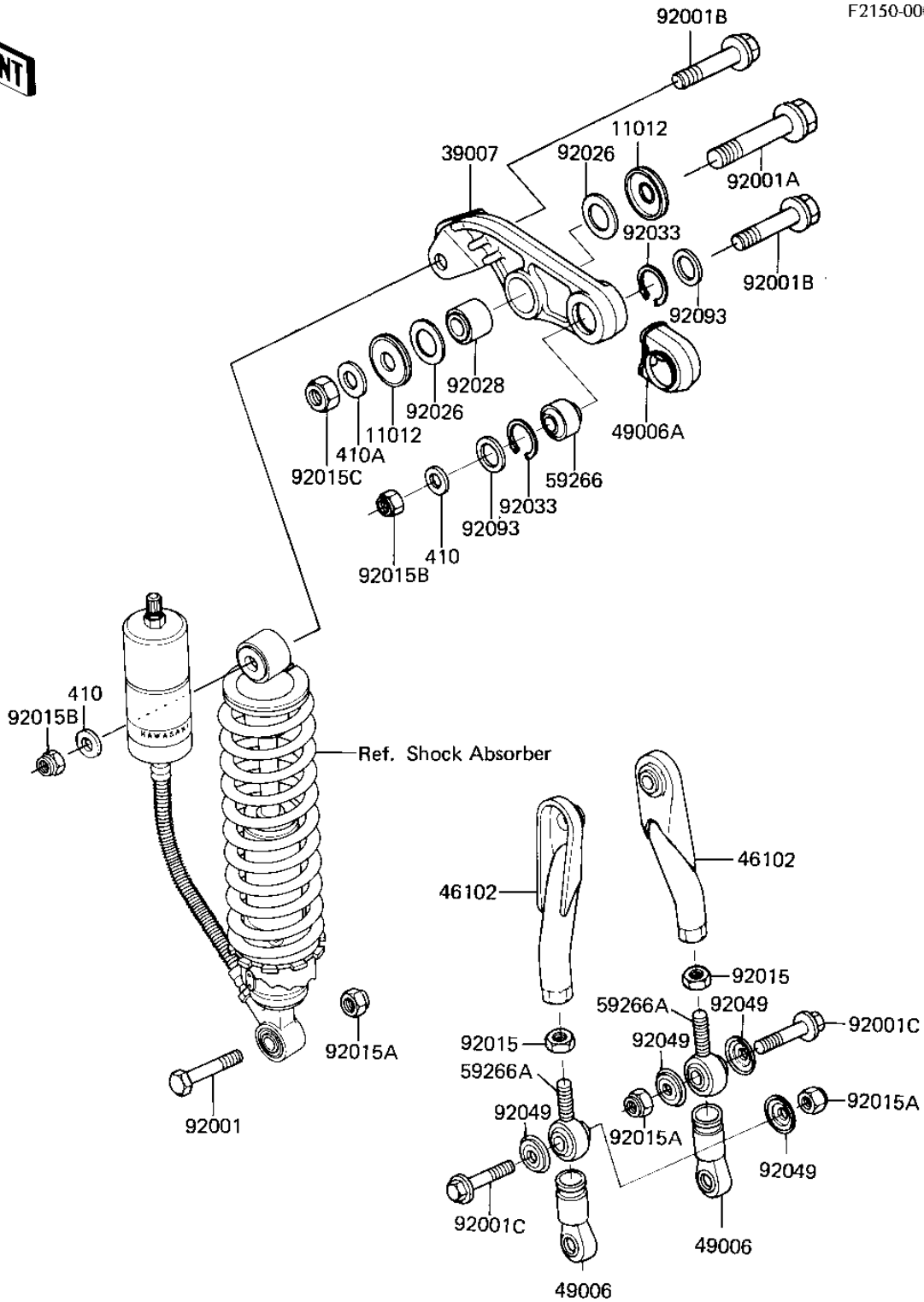


1981 KX™80 PARTS DIAGRAM

REAR SUSPENSION

F2150-0008



1981 KX™80 PARTS LIST

REAR SUSPENSION

ITEM NAME	PART NUMBER	QUANTITY
CAP,SUSPENSION ARM (Ref # 11012)	11012-1202	1
ARM-SUSP,UNI-TRAK (Ref # 39007)	39007-1008	1
ROD,UNI-TRAK ARM (Ref # 46102)	46102-1034	1
BOOT,UNITRAK (Ref # 49006)	49006-1049	1
BOOT,UNI-TRAK ARM (Ref # 49006A)	49006-1064	1
JOINT-BALL (Ref # 59266)	59266-1051	1
JOINT,BALL (Ref # 59266A)	59266-1005	1
BOLT,HEX HEAD,10X44 (Ref # 92001)	92001-1299	1
BOLT,14X56 (Ref # 92001A)	92001-1363	1
BOLT,12X48 (Ref # 92001B)	92001-1364	1
BOLT,10X34 (Ref # 92001C)	92001-1366	1
NUT 10MM (Ref # 92015)	92016-027	1
NUT,10MM (Ref # 92015A)	92015-1429	1
NUT-LOCK,12MM (Ref # 92015B)	92019-009	1
NUT-LOCK,14MM (Ref # 92015C)	92019-011	1
SPACER,21.2X34X0.5 (Ref # 92026)	92026-1100	1
BUSHING,REAR SHOCK (Ref # 92028)	92028-1153	1
RING-SNAP,22.3MM (Ref # 92033)	92033-1071	1
OIL SEAL,BALL JOINT (Ref # 92049)	92049-1072	1
SEAL (Ref # 92093)	92093-1067	1
WASHER PLAIN 12MM (Ref # 410)	410B1200	1
WASHER PLAIN 14MM (Ref # 410A)	410B1400	1