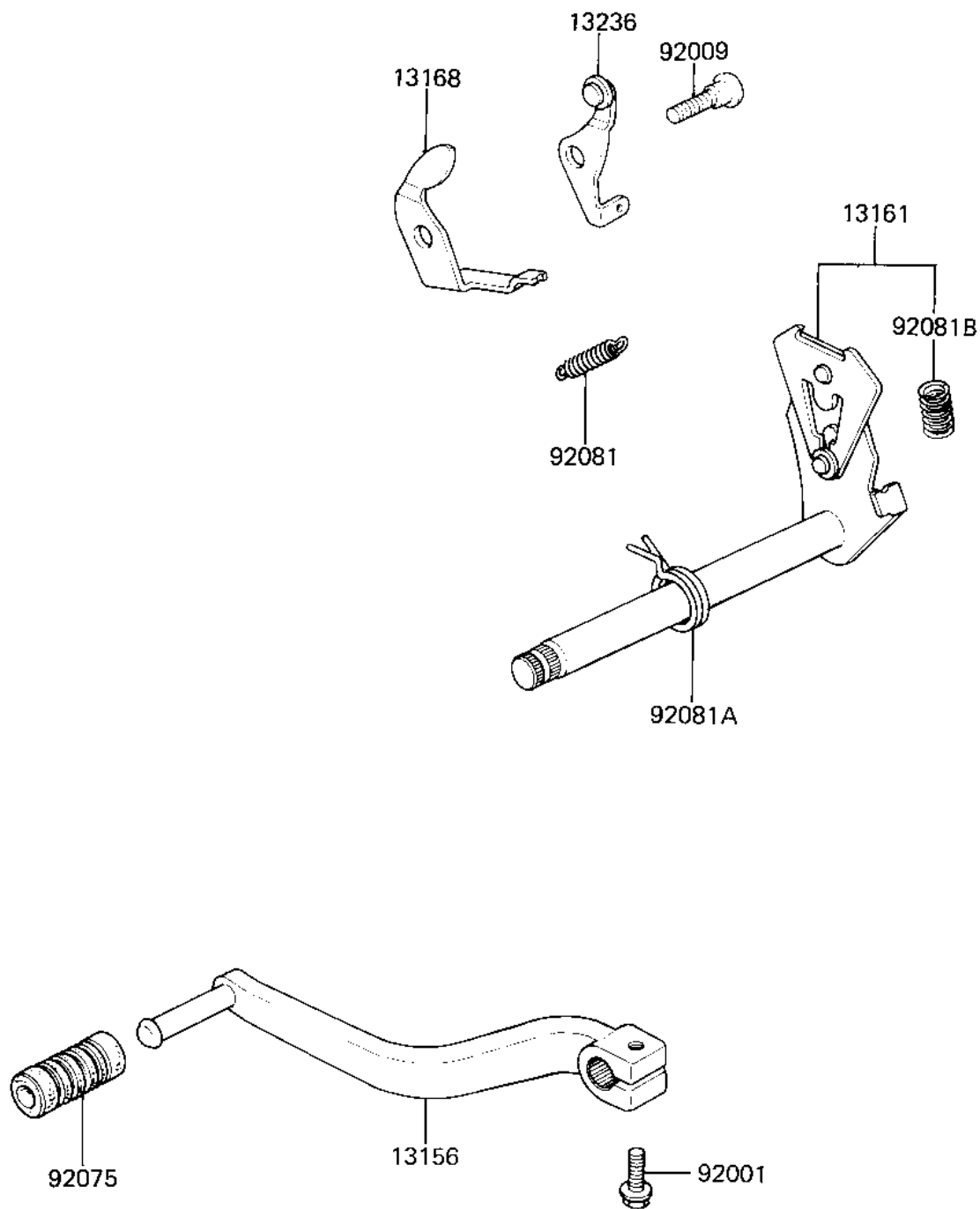


1981 KX™80 PARTS DIAGRAM

GEAR CHANGE MECHANISM ('82 KX80-C2)

E1370-0054



1981 KX™80 PARTS LIST

GEAR CHANGE MECHANISM ('82 KX80-C2)

ITEM NAME	PART NUMBER	QUANTITY
PEDAL,GEAR CHANGE (Ref # 13156)	13156-1049	1
LEVER-COMP-CHANGE SHA (Ref # 13161)	13161-1108	1
LEVER,POSITIONING (Ref # 13168)	13168-1069	1
LEVER,POSITIONING (Ref # 13236)	13236-1026	1
BOLT,FLANGED,6X22 (Ref # 92001)	92001-1352	1
SCREW,CHANGE LEVER (Ref # 92009)	92009-1102	1
DAMPER,CHANGE PEDAL (Ref # 92075)	92160-1108	1
SPRING,CHANGE LEVER (Ref # 92081)	92081-1109	1
SPRING,TENTION (Ref # 92081A)	92081-1129	1
SPRING CHANGE LEVER (Ref # 92081B)	92081-1275	1