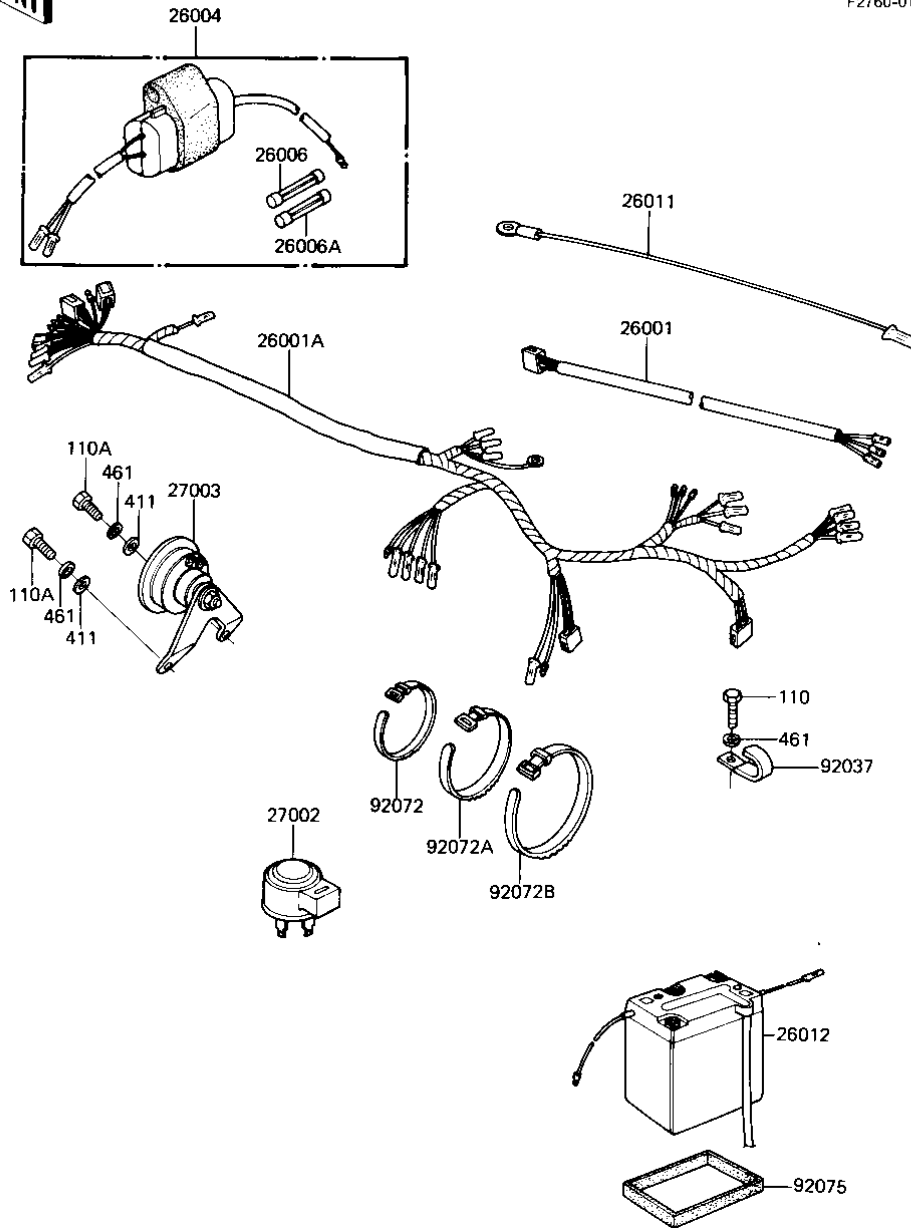


1982 KE175 PARTS DIAGRAM

CHASSIS ELECTRICAL EQUIPMENT ('82-'83 KE)



F2760-0188



1982 KE175 PARTS LIST

CHASSIS ELECTRICAL EQUIPMENT ('82-'83 KE)

ITEM NAME	PART NUMBER	QUANTITY
WIRING HARNESS, TAIL L (Ref # 26001)	26001-1007	1
WIRING HARNESS, MAIN (Ref # 26001A)	26001-1049	1
FUSE ASSY (Ref # 26004)	26004-1010	1
FUSE, 10A, L=30M/M (Ref # 26006)	26006-1002	1
FUSE, 15A, L=30M/M (Ref # 26006A)	26006-1003	1
WIRE, LEAD (Ref # 26011)	26011-093	1
GS BAT 6N6-1C (Ref # 26012)	K26012-1016	1
RELAY-TURN SIGNAL (Ref # 27002)	27002-013	1
HORN (Ref # 27003)	27003-1008	1
CLAMP, WIRING HARNESS (Ref # 92037)	92037-1069	1
BAND, SHORT (Ref # 92072)	92072-030	1
BAND, MIDDLE (Ref # 92072A)	92072-031	1
BAND, LONG (Ref # 92072B)	92072-032	1
MAT-BATTERY SIDE (Ref # 92075)	32103-023	1
BOLT-UPSET, 6X12 (Ref # 110)	112G0612	1
BOLT-UPSET, 6X16 (Ref # 110A)	112G0616	1
WASHER PLAIN 6MM (Ref # 411)	411B0600	1
WASHER SPRING 6MM (Ref # 461)	461F0600	1