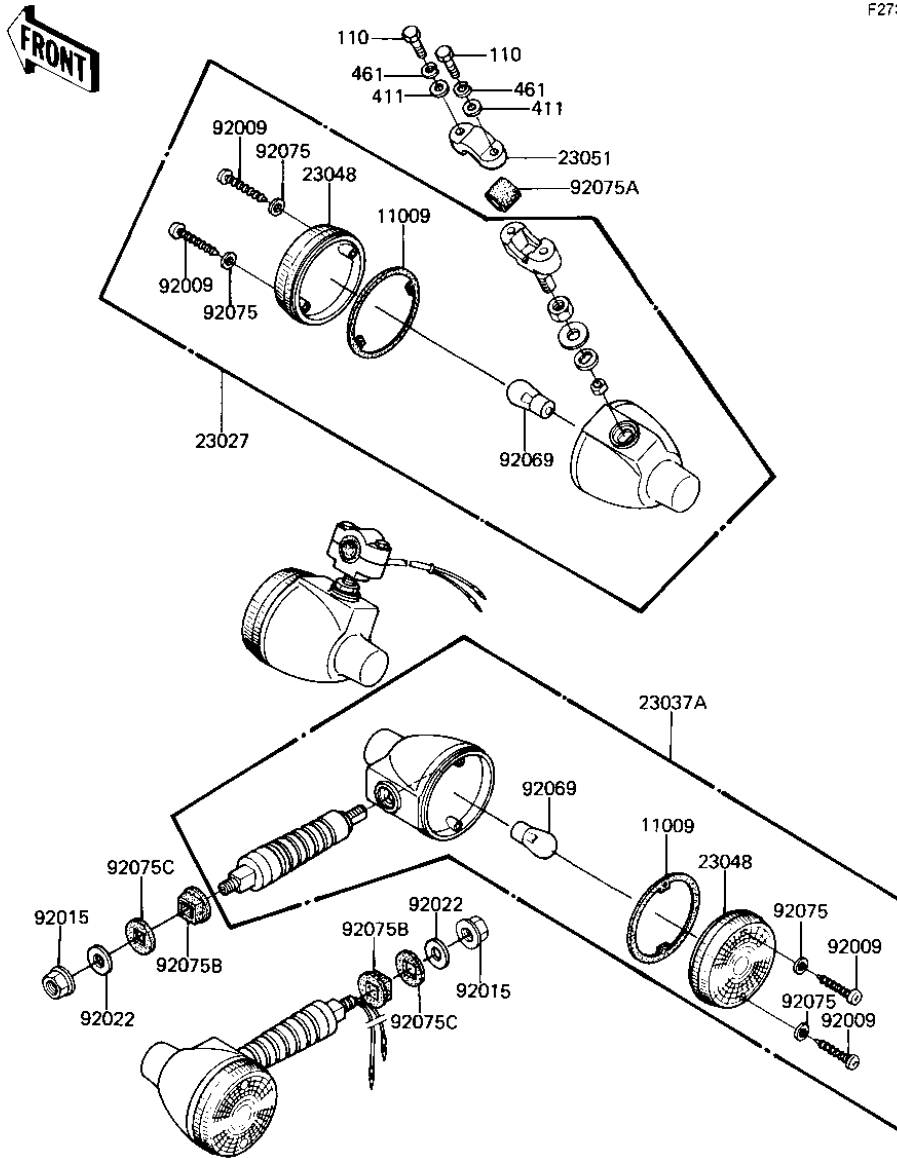


## 1982 KE175 PARTS DIAGRAM

TURN SIGNALS ('82-'83 KE175-D4/D5)

F2730-0052



## 1982 KE175 PARTS LIST

TURN SIGNALS ('82-'83 KE175-D4/D5)

ITEM NAME	PART NUMBER	QUANTITY
GASKET,SGNL LAMP LENS (Ref # 11009)	11009-1128	1
LAMP ASSY,FR SIGNAL (Ref # 23037)	23037-1039	1
LAMP ASSY,R SGNL LAMP (Ref # 23037A)	23037-1040	1
LENS-SIGNAL LAMP (Ref # 23048)	23048-1076	1
BRACKET,F SIGNAL LAMP (Ref # 23051)	23051-1018	1
SCREW,TAPPING (Ref # 92009)	92009-1056	1
NUT,FLANGED,10MM (Ref # 92015)	92015-1428	1
WASHER,10.5X32X1.6 (Ref # 92022)	92022-1071	1
BULB,6V 21CP (Ref # 92069)	92069-056	1
WASHER-PLAIN,4MM (Ref # 92075)	23058-002	1
DAMPER RUBBER (Ref # 92075A)	23066-003	1
DAMPER RUBBER (Ref # 92075B)	92075-1079	1
DAMPER RUBBER (Ref # 92075C)	92075-1080	1
BOLT,HEX HEAD,5X30 (Ref # 110)	110B0530A	1
WASHER PLAIN 5MM (Ref # 411)	411B0500	1
WASHER SPRING 5MM (Ref # 461)	461F0500	1