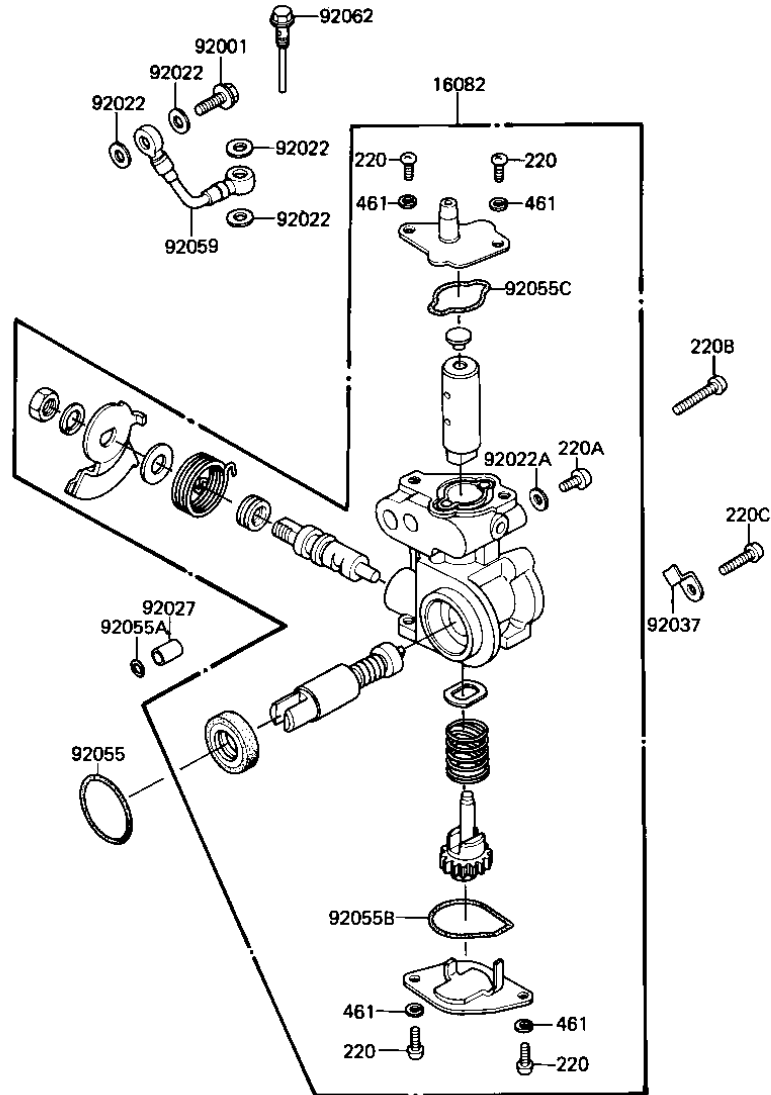


1982 KE175 PARTS DIAGRAM

OIL PUMP ('82-'83 KE175-D4/D5)

E1710-0028



1982 KE175 PARTS LIST

OIL PUMP ('82-'83 KE175-D4/D5)

ITEM NAME	PART NUMBER	QUANTITY
PUMP ASSY,OIL (Ref # 16082)	16082-1006	1
BOLT-BANJO,6MM (Ref # 92001)	92060-013	1
WASHER OIL PUMP BANJO (Ref # 92022)	92022-077	1
WASHER,AIR VENT (Ref # 92022A)	92022-1025	1
COLLAR (Ref # 92027)	92027-256	1
CLAMP (Ref # 92037)	92037-1080	1
"O" RING (Ref # 92055)	92055-055	1
"O" RING,5MM (Ref # 92055A)	670B1505	1
"O" RING,OIL PUMP LOW (Ref # 92055B)	92055-1015	1
"O" RING,OIL PUMP,UPP (Ref # 92055C)	92055-1016	1
PIPE,OIL (Ref # 92059)	92059-1090	1
NOZZLE, (Ref # 92062)	92062-1008	1
SCREW PAN HEAD 3X8 (Ref # 220)	220B0308	1
SCREW PAN HEAD 5X8 (Ref # 220A)	220B0508	1
SCREW PAN HEAD 5X20 (Ref # 220B)	220B0520	1
SCREW PAN HEAD 6X16 (Ref # 220C)	220B0616	1
WASHER SPRING 3MM (Ref # 461)	461F0300	1