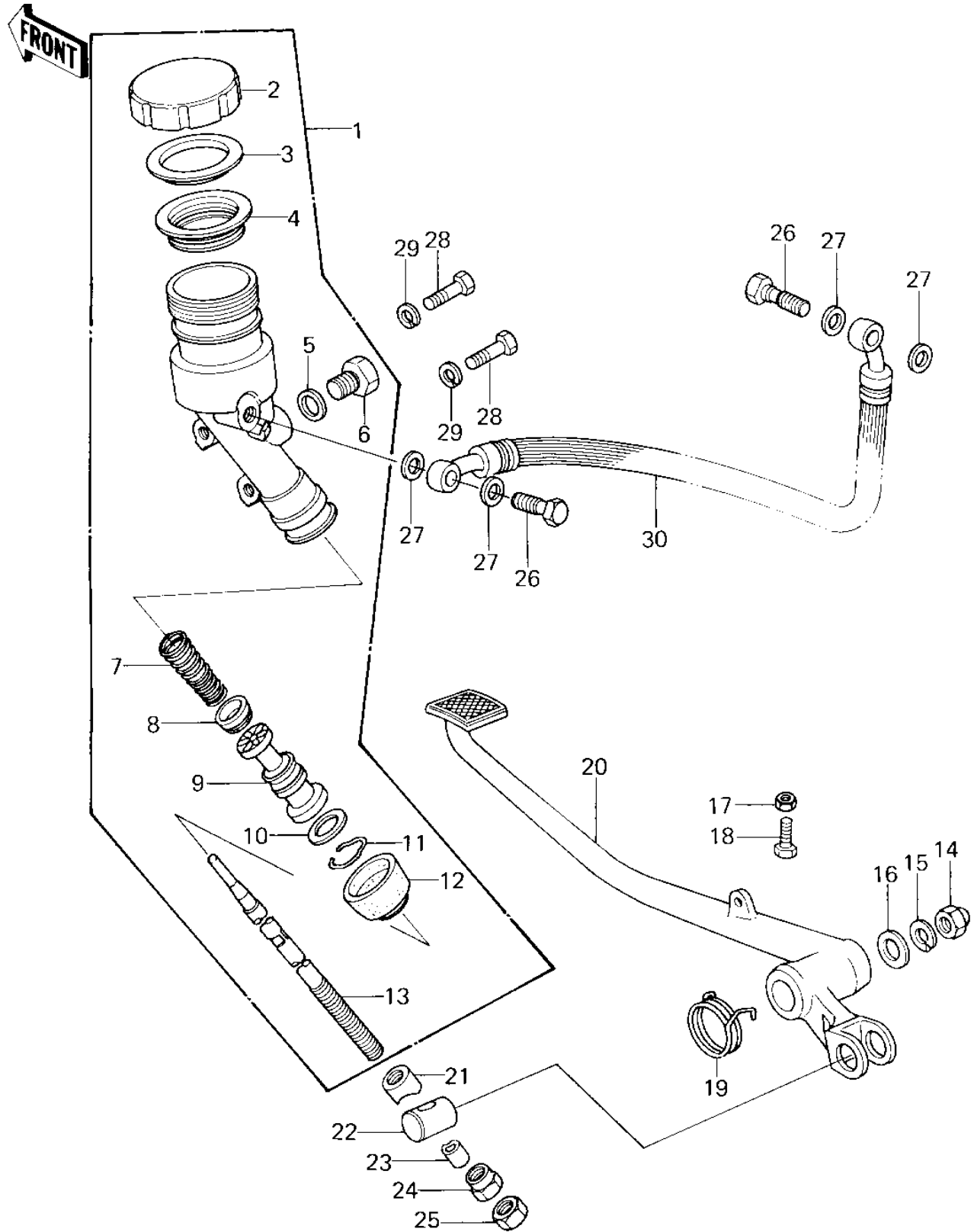


1978 Z1R PARTS DIAGRAM

REAR MASTER CYLINDER/BRAKE PEDAL ('78 D1)



1978 Z1R PARTS LIST

REAR MASTER CYLINDER/BRAKE PEDAL ('78 D1)

ITEM NAME	PART NUMBER	QUANTITY
CYLINDER ASY,MAST,RR (Ref # 1)	43015-1013	1
CAP,OIL CUP (Ref # 2)	43026-004	1
PLATE-MASTER CYLINDE (Ref # 3)	43027-001	1
DIAPHRAGM (Ref # 4)	43028-003	1
'O'RING (Ref # 5)	43079-002	1
BOLT (Ref # 6)	92001-1073	1
SPRING ASSY, RETURN (Ref # 7)	43018-002	1
CUP, PRIMARY (Ref # 8)	43019-002	1
PISTON ASSY (Ref # 9)	43072-004	1
STOPPER,PISTON (Ref # 10)	43022-002	1
RING,DUST SEAL (Ref # 11)	43058-004	1
DUST COVER (Ref # 12)	43024-003	1
ROD,BRAKE (Ref # 13)	43011-1006	1
NUT,CAP AND LOCK,8MM (Ref # 14)	92019-013	1
WASHER SPRING 8MM (Ref # 15)	461F0800	2
WASHER,8.5X20X1.6 (Ref # 16)	92022-1561	1
NUT 6MM (Ref # 17)	311B0600	1
BOLT-UPSET,6X20 (Ref # 18)	112G0620	1
SPRING,BRAKE PEDAL (Ref # 19)	92081-1046	1
PEDAL,BRAKE (Ref # 20)	43001-1014	1
COLLAR,BRAKE ROD (Ref # 21)	92027-1065	2
PIN,BRAKE ROD (Ref # 22)	92043-1016	1
NUT,LOCK,10M/M (Ref # 24)	92015-1027	1
NUT 10MM (Ref # 25)	315B1000	1
BOLT,OIL,L=23 (Ref # 26)	92002-1888	1
WASHER-OIL BOLT (Ref # 27)	43067-001	1
BOLT,FLANGED,8X35 (Ref # 28)	92001-1577	1
HOSE,REAR MASTER (Ref # 30)	43059-1006	1