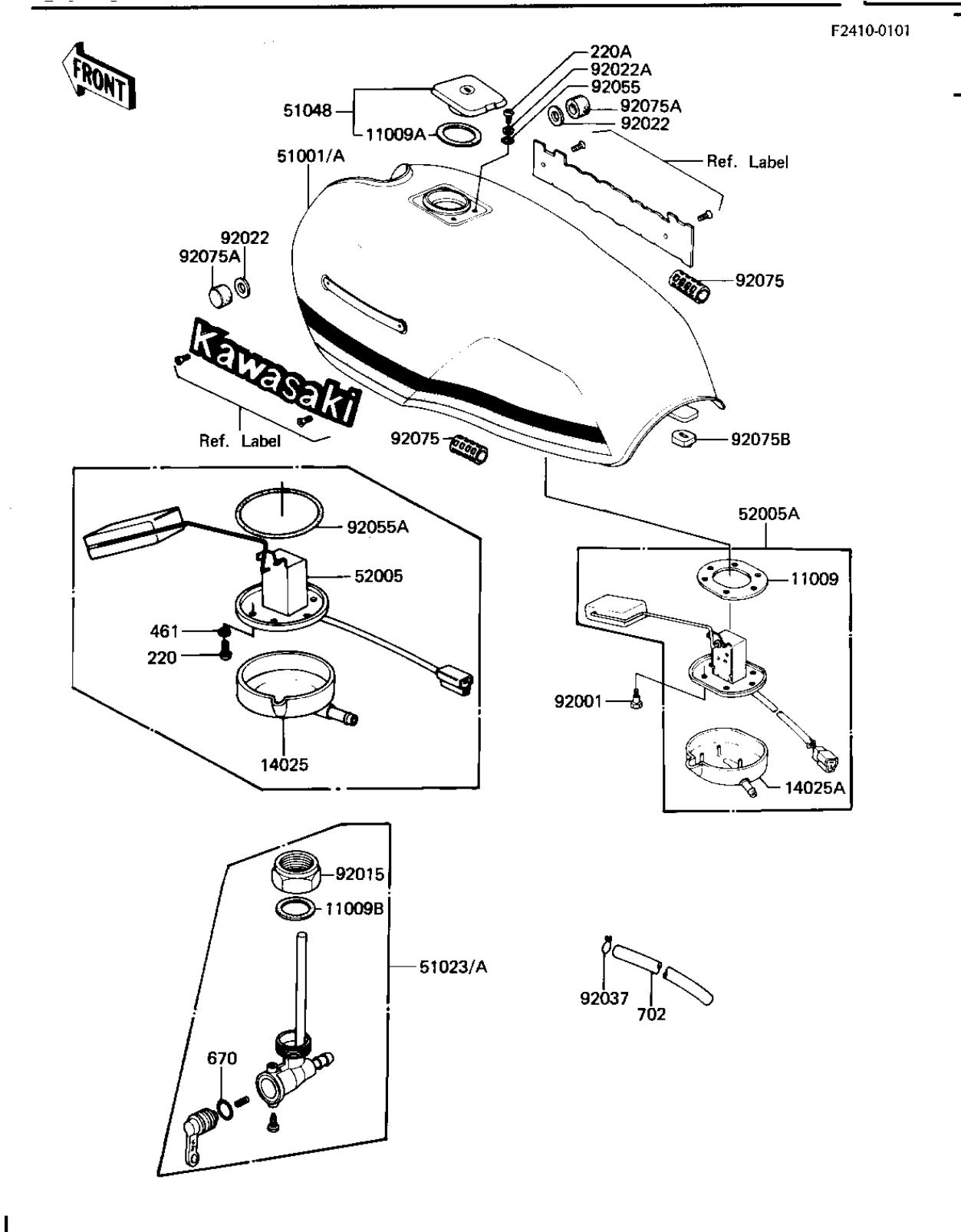


1981 1000 GP PARTS DIAGRAM

FUEL TANK



1981 1000 GP PARTS LIST

FUEL TANK

ITEM NAME	PART NUMBER	QUANTITY
GASKET,FUEL TANK CAP (Ref # 11009A)	11009-1051	1
GASKET-FUEL COCK JNT. (Ref # 11009B)	92065-081	1
COVER,FUEL GAGE (Ref # 14025)	14025-1091	1
TANK-FUEL,F.RED (Ref # 51001)	51001-1077-B1	1
TAP ASSY,FUEL (Ref # 51023)	51023-1007	1
CAP-ASSY-TANK,FUEL (Ref # 51048)	51048-1015	1
GAUGE,FUEL (Ref # 52005)	52005-1018	1
FUEL COCK JOINT NUT (Ref # 92015)	51035-009	1
WASHER-PL-10.5X26X2.3 (Ref # 92022)	92022-044	1
WASHER,PLAIN (Ref # 92022A)	92022-1038	1
CLAMP,CHAIN OILER (Ref # 92037)	92037-147	1
"O" RING (Ref # 92055)	92055-1023	1
"O" RING (Ref # 92055A)	92055-1067	1
DAMPER RUBBER (Ref # 92075)	92075-084	1
DAMPER RUBBER,FL TANK (Ref # 92075A)	92075-125	1
DAMPER RUBBER FUEL TA (Ref # 92075B)	92075-295	1
SCREW PAN HEAD 5X8 (Ref # 220)	220B0508	1
SCREW PAN HEAD 5X10 (Ref # 220A)	220B0510	1
WASHER SPRING 5MM (Ref # 461)	461F0500	1
"O" RING, 10MM (Ref # 670)	670B2010	1
TUBE-BREATHING (BULK) (Ref # 702)	702A071000	1