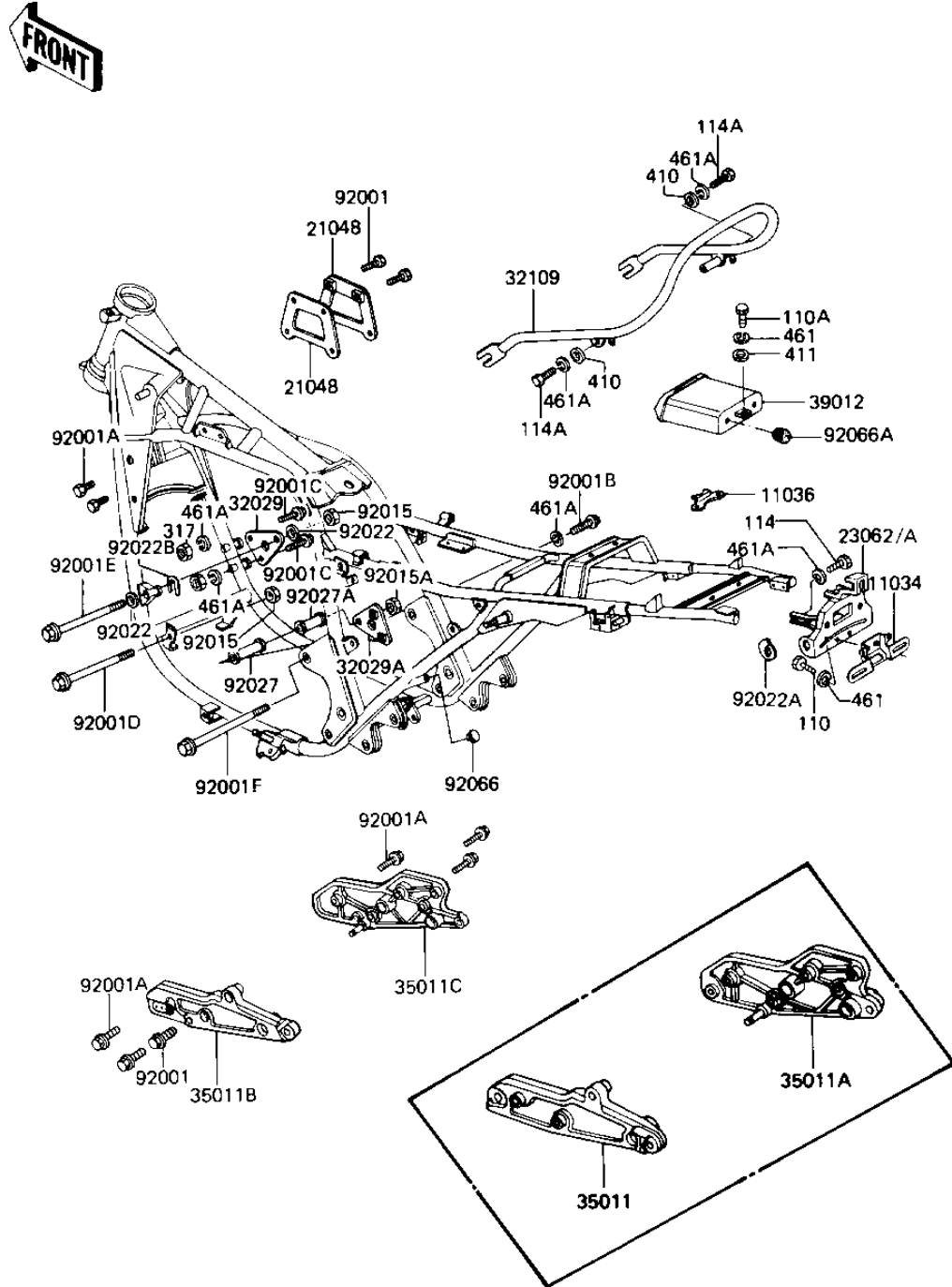


1981 1000 Standard PARTS DIAGRAM

FRAME FITTINGS

F2131-0124



1981 1000 Standard PARTS LIST

FRAME FITTINGS

| ITEM NAME | PART NUMBER | QUANTITY |
|--------------------------------------|-------------|----------|
| BRACKET (Ref # 11034) | 11034-1922 | 1 |
| BRACKET-A,STORAGE (Ref # 11036) | 11036-1070 | 1 |
| PLATE,IGNITION COIL (Ref # 21048) | 21048-1001 | 1 |
| BRACKET-COMP,TL LAMP (Ref # 23062) | 23062-1032 | 1 |
| BRACKET-ENGINE (Ref # 32029) | 32029-1142 | 1 |
| BRACKET-ENGINE (Ref # 32029A) | 32029-1143 | 1 |
| GRIP-FRAM (Ref # 32109) | 32109-1028 | 1 |
| STAY,MUFFLER,LH (Ref # 35011) | 35011-1086 | 1 |
| STAY,MUFFLER,RH (Ref # 35011A) | 35011-1087 | 1 |
| CASE-STORAGE (Ref # 39012) | 39012-1014 | 1 |
| BOLT,HEX HEAD,6MM (Ref # 92001) | 92001-137 | 1 |
| BOLT,FLANGED,8X35 (Ref # 92001A) | 92001-1577 | 1 |
| BOLT (Ref # 92001B) | 92001-1578 | 1 |
| BOLT-FLANGE (Ref # 92001C) | 92001-1582 | 1 |
| BOLT (Ref # 92001D) | 92001-1585 | 1 |
| BOLT,FLANGED,10X320,B (Ref # 92001E) | 92001-1624 | 1 |
| BOLT,FLANGED,8X85 (Ref # 92001F) | 92001-1596 | 1 |
| NUT,10MM (Ref # 92015) | 92015-1429 | 1 |
| NUT-LOCK,12MM (Ref # 92015A) | 92019-009 | 1 |
| WASHER,PLAIN (Ref # 92022) | 92022-1022 | 1 |
| WASHER,SIGNAL LAMP BR (Ref # 92022A) | 92022-1230 | 1 |
| WASHER,U FORMED (Ref # 92022B) | 92022-1259 | 1 |
| COLLAR,FR AXLE,L=27 (Ref # 92027) | 92027-1318 | 1 |
| COLLAR,STEP (Ref # 92027A) | 92027-1314 | 1 |
| PLUG,FRAME END (Ref # 92066) | 92066-1034 | 1 |
| RUBBER PLUG (Ref # 92066A) | 92074-038 | 1 |
| BOLT-UPSET,6X12 (Ref # 110) | 112G0612 | 1 |
| BOLT-UPSET,6X16 (Ref # 110A) | 112G0616 | 1 |
| BOLT-SMALL-UPSET,8X16 (Ref # 114) | 115G0816 | 1 |

1981 1000 Standard PARTS LIST

FRAME FITTINGS

| ITEM NAME | PART NUMBER | QUANTITY |
|---------------------------------------|-------------|----------|
| BOLT HEX HEAD 8X70 (Ref # 114A) | 114B0870 | 1 |
| NUT,8M/M (Ref # 317) | 317B0800 | 1 |
| WASHER PLAIN 8MM (Ref # 417) | 410B0800 | 1 |
| WASHER PLAIN 6MM (Ref # 411) | 411B0600 | 1 |
| UNAVAILABLE IN PRICE BOOK (Ref # 461) | 46180600 | 1 |
| WASHER SPRING (Ref # 461A) | 461B0800 | 1 |