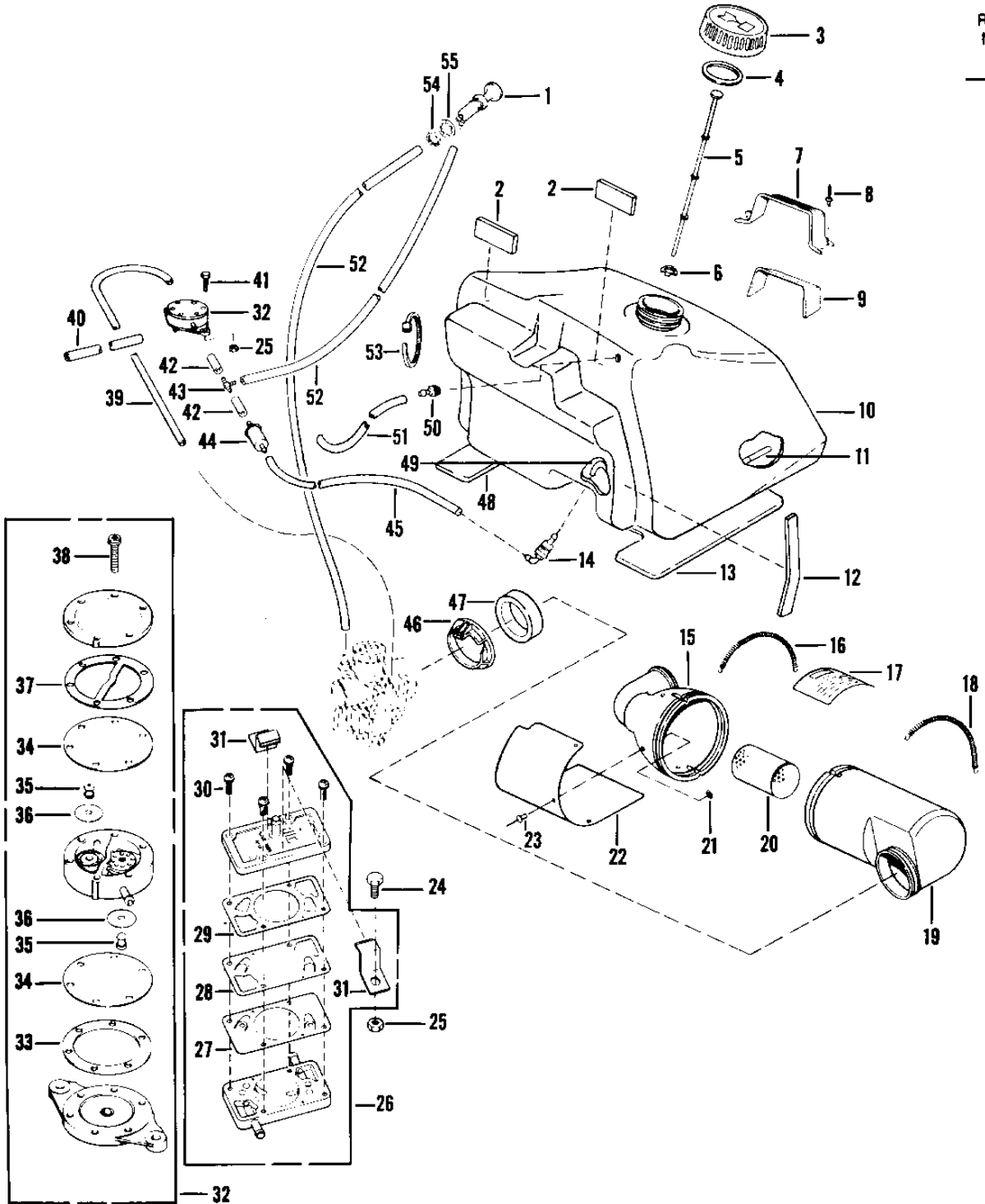


## 1979 Drifter 340 PARTS DIAGRAM

FUEL SYSTEM



SA340-A3/SB440-A3

D

## 1979 Drifter 340 PARTS LIST

### FUEL SYSTEM

ITEM NAME	PART NUMBER	QUANTITY
PUMP-PRIMING (Ref # 1)	49043-3502	1
PAD-FUEL TANK SIDE (Ref # 2)	39156-3523	1
CAP-FUEL TANK (Ref # 3)	51049-3501	1
GASKET-FUEL CAP (Ref # 4)	11009-3502	1
GAGE-FUEL (Ref # 5)	52005-3503	1
RETAINER-CLIP (Ref # 6)	917162	1
BRACKET-TANK (Ref # 7)	32052-3505	1
RIVET (Ref # 8)	534YW0604	1
PAD-BRACKET-FUEL (Ref # 9)	39085-3501	1
TANK-FUEL (Ref # 10)	51004-3503	1
PIPE-PICKUP-FUEL TANK (Ref # 11)	32032-3504	1
PAD-FUEL TANK TOP (Ref # 12)	39156-3522	1
PAD-TANK LH (Ref # 13)	39156-3527	1
FITTING-FUEL TANK (Ref # 14)	92005-3510	1
HOUSING-INTAKE (Ref # 15)	13227-3527	1
SPRING-HOUSING INTAKE (Ref # 16)	92081-3544	1
LABEL-WARN-SILENCER (Ref # 17)	56040-3502	1
SPRING-HOUSING INTAKE (Ref # 18)	92081-3545	1
HOUSING-SILENCER (Ref # 19)	13227-3514	1
TUBE-FUEL 3/32ID-100' (Ref # 20)	92059-3518	1
WASHER (Ref # 21)	92022-3531	1
BAFFLE-SILENCER (Ref # 22)	18020-3508	1
RIVET (Ref # 23)	92039-3532	1
*** N.L.A.*** (Canada) (Ref # 24)	118BA0810	1
NUT (Ref # 25)	351BA0800	1
PUMP-FUEL (Ref # 26)	49040-3509	1
.KIT-GSKT-FUEL PUMP 81 (Ref # 27)	50289-3503	3
.SCREW (Ref # 30)	92009-3548	1
.BRACKET-FUEL PUMP (Ref # 31)	11034-3544	1

## 1979 Drifter 340 PARTS LIST

### FUEL SYSTEM

ITEM NAME	PART NUMBER	QUANTITY
TUBE-FUEL 7/32ID-100' (Ref # 39)	92059-3520	2
FITTING-FUEL PUMP (Ref # 43)	92005-3506	1
FILTER-FUEL (Ref # 44)	49019-3502	1
ADAPTOR-CARB SEAL (Ref # 46)	41077-3506	1
SEAL-EXHAUST DUCT (Ref # 47)	92093-3510	1
PAD-TANK RH (Ref # 48)	39156-3526	1
FITTING-FUEL TANK VEN (Ref # 50)	92005-3503	1
BAND (Ref # 53)	92072-3505	1
NUT (Ref # 54)	92015-3515	1
WASHER (Ref # 55)	92022-3521	1