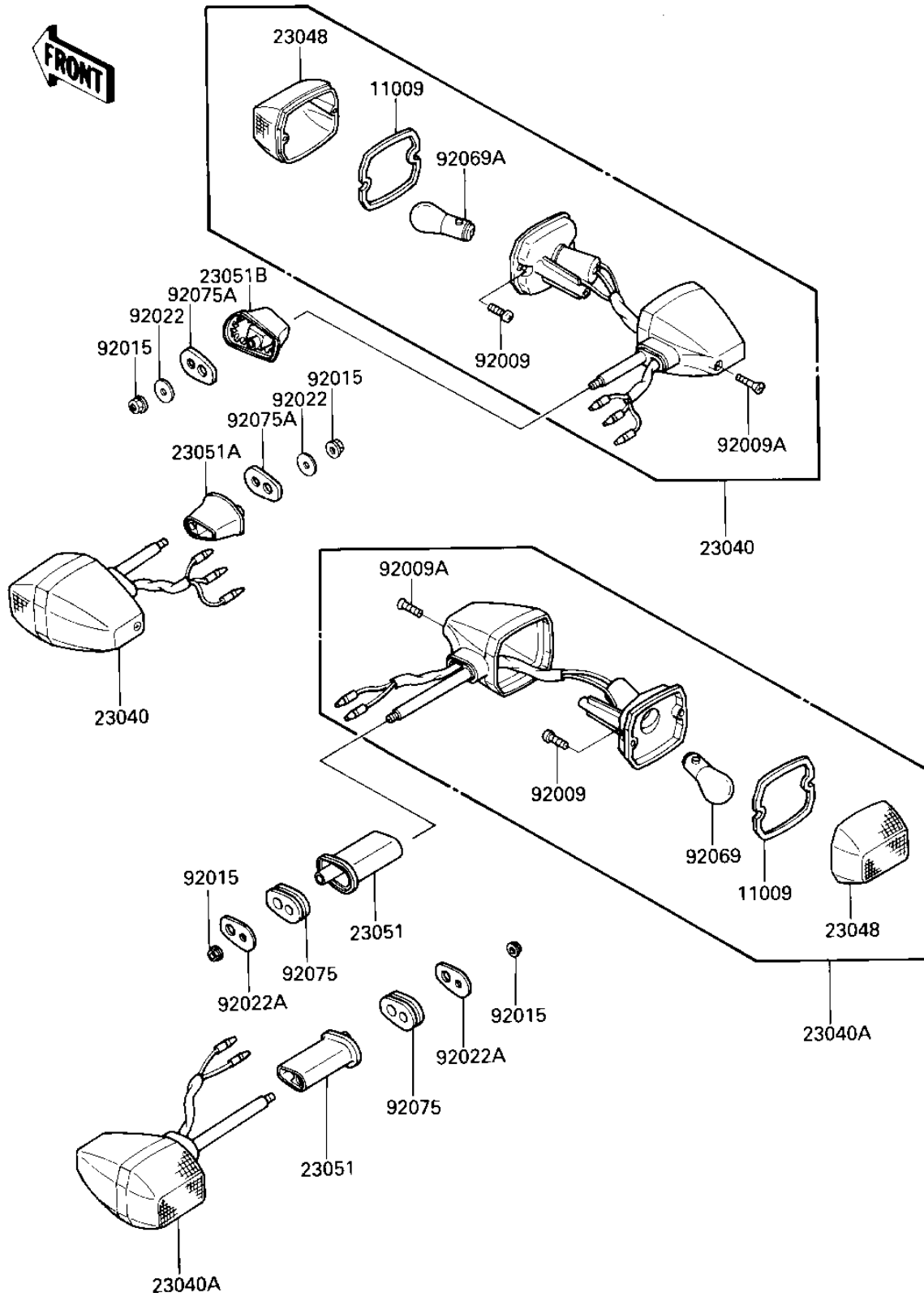


## 1987 NINJA® 600R PARTS DIAGRAM

TURN SIGNALS

F2730-0151



## 1987 NINJA® 600R PARTS LIST

### TURN SIGNALS

| ITEM NAME                            | PART NUMBER | QUANTITY |
|--------------------------------------|-------------|----------|
| GASKET,SIGNAL LAMP (Ref # 11009)     | 11009-1402  | 1        |
| LAMP-SIGNAL,FR (Ref # 23040)         | 23040-1107  | 1        |
| LAMP-SIGNAL,RR (Ref # 23040A)        | 23040-1108  | 1        |
| LENS-SIGNAL LAMP (Ref # 23048)       | 23048-1054  | 1        |
| BRACKET-SIGNAL LAMP,R (Ref # 23051)  | 23051-1165  | 1        |
| BRACKET-SIGNAL LAMP,F (Ref # 23051A) | 23051-1172  | 1        |
| BRACKET-SIGNAL LAMP,F (Ref # 23051A) | 23051-1173  | 1        |
| SCREW,TAPPING,3X16 (Ref # 92009)     | 92009-1115  | 1        |
| SCREW,4X20 (Ref # 92009A)            | 92009-1304  | 1        |
| NUT,FLANGED,6MM (Ref # 92015)        | 92015-1367  | 1        |
| WASHER 6.5X20X1.6T (Ref # 92022)     | 92022-125   | 1        |
| WASHER SIGNAL LAMP (Ref # 92022A)    | 92022-1672  | 1        |
| BULB 12V 32CP (Ref # 92069)          | 92069-055   | 1        |
| BULB,12V 23/8W (Ref # 92069A)        | 92069-060   | 1        |
| DAMPER,SIGNAL LAMP (Ref # 92075)     | 92075-1698  | 1        |
| DAMPER (Ref # 92075A)                | 92075-1749  | 1        |