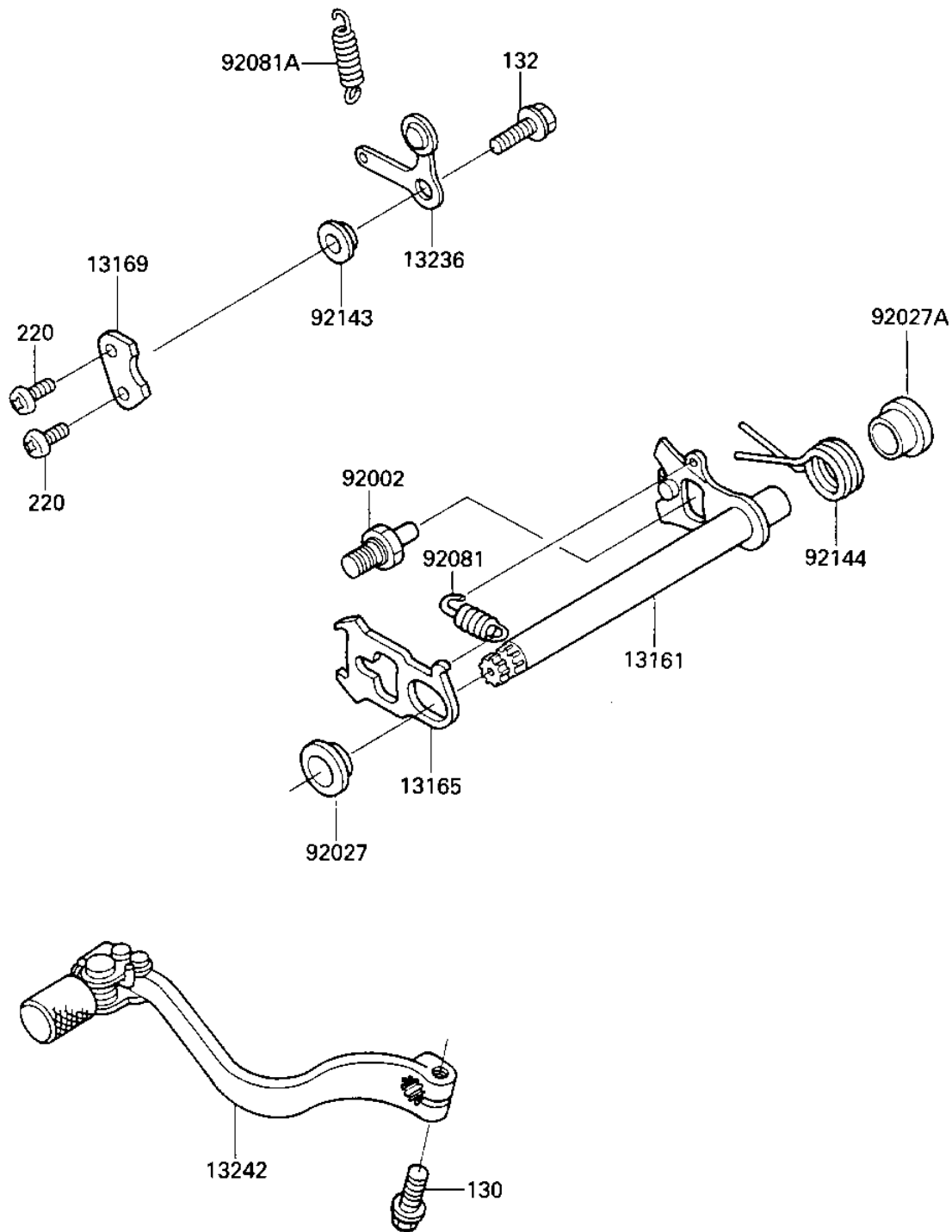


1987 KX™500 PARTS DIAGRAM

GEAR CHANGE MECHANISM

E1370-0176



1987 KX™500 PARTS LIST

GEAR CHANGE MECHANISM

| ITEM NAME | PART NUMBER | QUANTITY |
|-------------------------------------|-------------|----------|
| LEVER-COMP-CHANGE SHA (Ref # 13161) | 13161-1144 | 1 |
| PAWL,CHANGE LEVER (Ref # 13165) | 13165-1122 | 1 |
| PLATE,CHANGE DRUM (Ref # 13169) | 13169-012 | 1 |
| LEVER-COMP,POSITION (Ref # 13236) | 13236-1155 | 1 |
| LEVER-ASSY-CHANGE,PED (Ref # 13242) | 13242-1226 | 1 |
| BOLT,8X15 (Ref # 92002) | 92002-1601 | 1 |
| COLLAR,CHANGE SHAFT,L (Ref # 92027) | 92027-1512 | 1 |
| COLLAR (Ref # 92027A) | 92027-1946 | 1 |
| SPRING-CHANGE LEVER (Ref # 92081) | 92081-076 | 1 |
| SPRING,CHNG DRUM LEV (Ref # 92081A) | 92083-012 | 1 |
| COLLAR (Ref # 92143) | 92143-1055 | 1 |
| SPRING,CHANGE SHAFT R (Ref # 92144) | 92144-1142 | 1 |
| BOLT,FLANGED,6X25 (Ref # 130) | 130G0625 | 1 |
| BOLT-FLANGED-SMALL (Ref # 132) | 132G0616 | 1 |
| SCREW PAN HEAD 6X14 (Ref # 220) | 220B0614 | 1 |