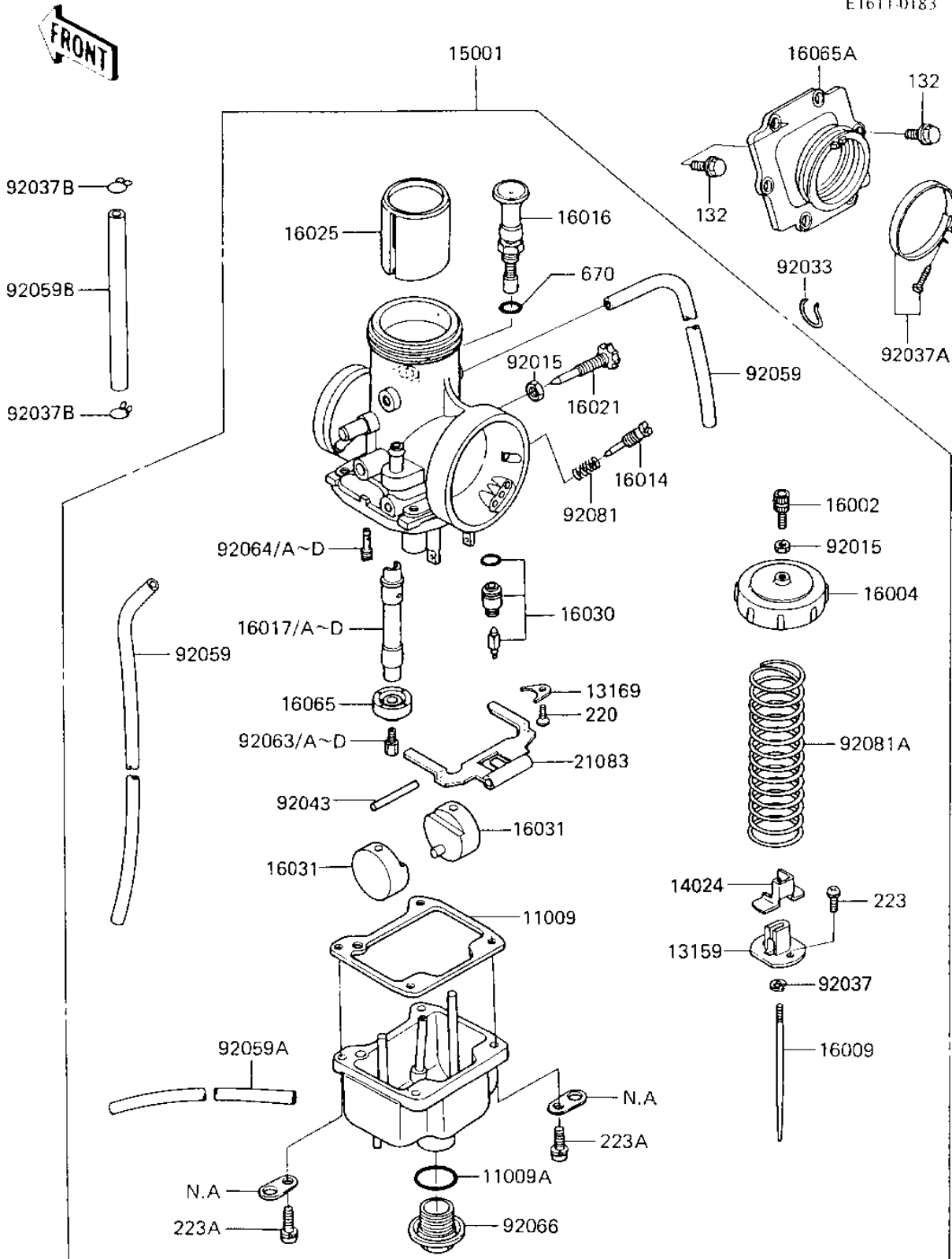


## 1986 KX™250 PARTS DIAGRAM

CARBURETOR

E1611-0183



## 1986 KX™250 PARTS LIST

### CARBURETOR

ITEM NAME	PART NUMBER	QUANTITY
GASKET,FLOAT CHAMBER (Ref # 11009)	11009-1488	1
GASKET-COVER (Ref # 11009A)	16038-009	1
CONNECTOR,THROTTLE (Ref # 13159)	13159-1010	1
PLATE, LOCK (Ref # 13169)	13169-1190	1
COVER,THROTTLE (Ref # 14024)	14025-1478	1
CARBURETOR-ASSY (Ref # 15001)	15001-1205	1
CABLE ADJUSTER (Ref # 16002)	16002-011	1
CAP-CHAMBER,MIXING (Ref # 16004)	16004-1056	1
NEEDLE-JET,6J5-3 (Ref # 16009)	16009-1303	1
SCREW (Ref # 16014)	16014-006	1
PLUNGER,STARTER (Ref # 16016)	16016-1064	1
JET-NEEDLE,R-6 (Ref # 16017)	16017-1214	1
JET-NEEDLE,R-0 (Ref # 16017A)	16017-1235	1
JET-NEEDLE,R-8 (Ref # 16017B)	16017-1233	1
JET-NEEDLE,R-4 (Ref # 16017C)	16017-1236	1
JET-NEEDLE,R-2 (Ref # 16017D)	16017-1234	1
SCREW-THROTTLE STOP (Ref # 16021)	16021-1108	1
VALVE-THROTTLE,CA3.0 (Ref # 16025)	16025-1126	1
VALVE-FLOAT,3.0 (Ref # 16030)	16030-1060	1
FLOAT (Ref # 16031)	16031-1062	1
HOLDER,NEEDLE JET (Ref # 16065)	16065-1017	1
HOLDER-CARBURETOR (Ref # 16065A)	16065-1124	1
ARM (Ref # 21083)	21083-1055	1
NUT-CABLE ADJUST LOC (Ref # 92015)	16003-006	1
CIRCLIP (Ref # 92033)	92036-018	1
CIRCLIP (Ref # 92037)	16008-010	1
CLAMP,CARBURETOR HOL (Ref # 92037A)	92037-1313	1
CLAMP,CHAIN OILER (Ref # 92037B)	92037-147	1
FLOAT PIN (Ref # 92043)	16032-003	1

## 1986 KX™250 PARTS LIST

### CARBURETOR

ITEM NAME	PART NUMBER	QUANTITY
TUBE,3.5X6.5X410 (Ref # 92059)	92059-1142	1
TUBE,3.5X6.5X350 (Ref # 92059A)	92059-1211	1
TUBE,5.8X10.8X230 (Ref # 92059B)	92059-1431	1
MAIN JET NO 360A (Ref # 92063)	92063-032	1
JET-MAIN NO 320A (Ref # 92063A)	92063-047	1
JET-MAIN NO 330A (Ref # 92063B)	92063-048	1
MAIN JET NO 340A (Ref # 92063C)	92063-049	1
JET-MAIN NO 350A (Ref # 92063D)	92063-050	1
JET-PILOT NO 30 (Ref # 92064)	92064-022	1
JET-PILOT NO 35 (Ref # 92064A)	92064-023	1
JET-PILOT NO 40 (Ref # 92064B)	92064-024	1
JET-PILOT NO 45 (Ref # 92064C)	92064-044	1
PILOT JET,#50 (Ref # 92064D)	92064-1005	1
PLUG,MAIN JET (Ref # 92066)	92066-1206	1
SPRING-THR STOP SCRE (Ref # 92081)	16022-007	1
SPRING,THROTTLE VALV (Ref # 92081A)	92081-1991	1
BOLT-FLANGED-SMALL (Ref # 132)	132G0620	1
SCREW PAN HEAD 4X6 (Ref # 220)	220B0406	1
SCREW-PAN-WS-CROS (Ref # 223)	223B0307	1
SCREW-PAN-WS-CROS (Ref # 223A)	223B0516	1
"O" RING,9MM (Ref # 670)	670B1509	1