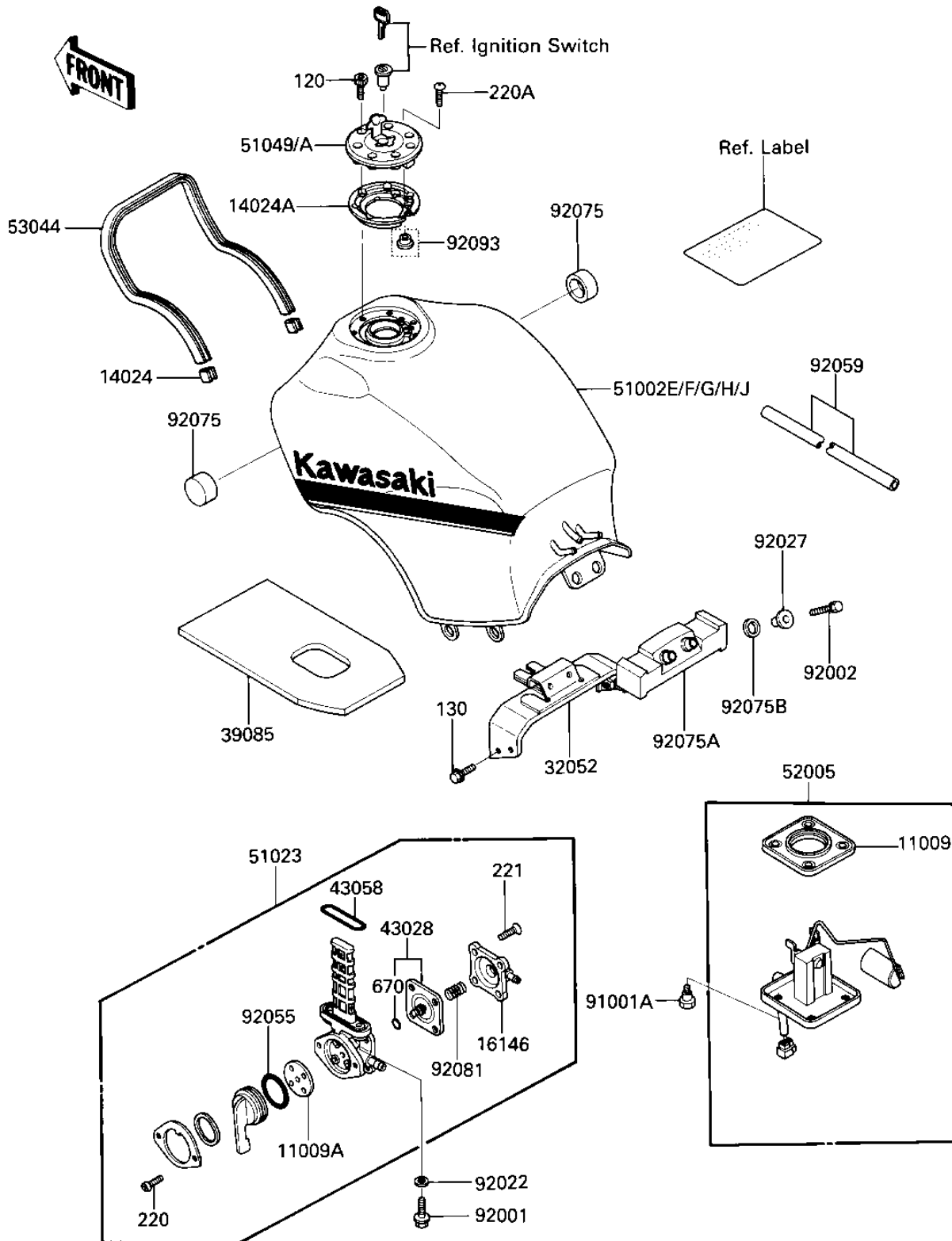


## 1986 NINJA® 1000R PARTS DIAGRAM

FUEL TANK

F2410-0311



## 1986 NINJA® 1000R PARTS LIST

### FUEL TANK

ITEM NAME	PART NUMBER	QUANTITY
GASKET,FUEL GAUGE (Ref # 11009)	11009-1656	1
GASKET,TAP VALVE (Ref # 11009A)	11009-1530	1
COVER,WINDSHIELD END (Ref # 14024)	14025-1756	1
COVER (Ref # 14024A)	14025-1913	1
COVER ASSY,TAP (Ref # 16146)	16146-1005	1
BRACKET-TANK,RR (Ref # 32052)	32052-1208	1
PAD-TANK (Ref # 39085)	39085-1051	1
DIAPHRAGM ASSY,TAP (Ref # 43028)	43028-1015	1
"O" RING (Ref # 43058)	51039-010	1
TANK-COMP-FUEL,F.RED (Ref # 51002E)	51002-5165-B1	1
TANK-COMP,FUEL,F.RED (Ref # 51002F)	51002-5166-B1	1
TANK-COMP-FUEL,EBONY (Ref # 51002G)	51002-5167-H8	1
TANK-COMP,FUEL,EBONY (Ref # 51002H)	51002-5168-H8	1
TANK-COMP-FUEL,M.G.GOLD (Canad (Ref # 51002J)	51002-5288-W4	1
TAP-ASSY,FUEL (Ref # 51023)	51023-1119	1
CAP-TANK,FUEL (Ref # 51049)	51049-1079	1
GAUGE,FUEL (Ref # 52005)	52005-1072	1
TRIM,FUEL TANK (Ref # 53044)	53044-1158	1
BOLT,6X20,FUEL TAP (Ref # 92001)	92001-1091	1
BOLT,FUEL GAGE (Ref # 92001A)	92001-1705	1
BOLT,6X30 (Ref # 92002)	92002-1295	1
WASHER-PLAIN (Ref # 92022)	92022-183	1
COLLAR,6=16.1 (Ref # 92027)	92027-1847	1
"O" RING,TAP LEVER (Ref # 92055)	92055-1027	1
TUBE,5X8X660 (Ref # 92059)	92059-1663	1
DAMPER,FUEL TANK (Ref # 92075)	92075-1716	1
DAMPER,FUEL TANK (Ref # 92075A)	92075-1762	1
DAMPER RUBBER,SIGNAL (Ref # 92075B)	92075-310	1
SPRING,TAP (Ref # 92081)	92081-1171	1

## 1986 NINJA® 1000R PARTS LIST

### FUEL TANK

ITEM NAME	PART NUMBER	QUANTITY
OIL SEAL,FUEL TANK (Ref # 92093)	92093-1030	1
BOLT-SOCKET (Ref # 120)	120S0512	1
BOLT,FLANGED,6X14 (Ref # 130)	130G0614	1
SCREW PAN HEAD 3X8 (Ref # 220)	220B0308	1
SCREW-PAN-CROS (Ref # 220A)	220C0508	1
SCREW-CSK-CROS,4X14 (Ref # 221)	221B0414	1
"O" RING,4MM (Ref # 670)	670B1504	1